

N 系列射频同轴连接器

概述

N 系列射频同轴连接器是具有螺纹连接机构的中小功率射频同轴电连接器，它具有抗振性强、机械和电气性能优越、可靠性高等特点，广泛应用于无线电设备和电子仪器领域，该系列产品能够与国际上 N 系列相应产品进行互换。

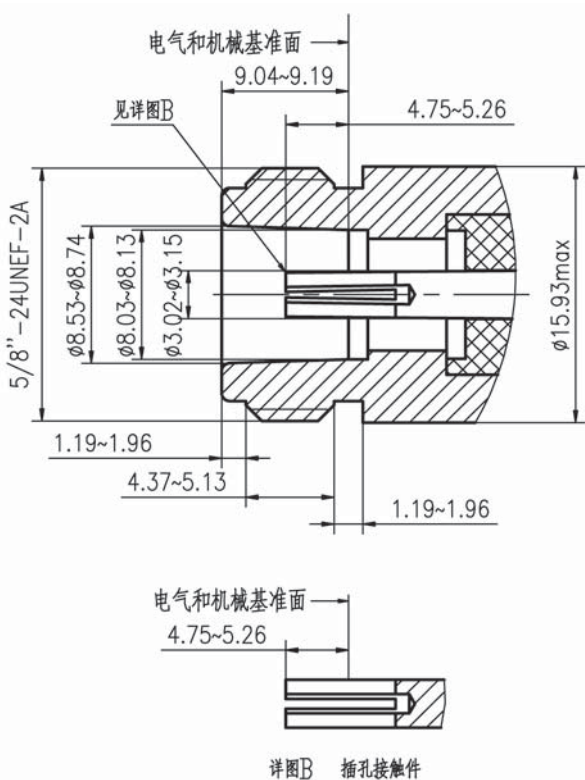
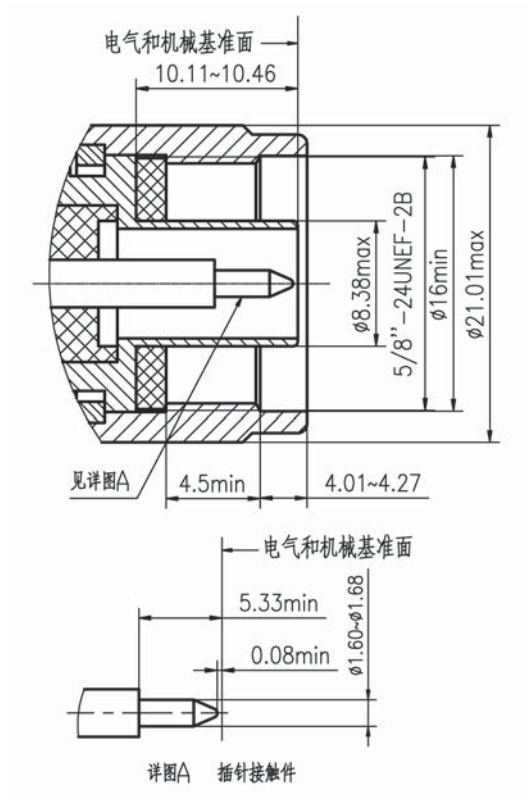
主要技术特性

工作温度	-65~+125℃	绝缘电阻	≥5000MΩ
特性阻抗	50Ω	耐电压	1500Vmax
工作频率	DC-11GHz	接触电阻	内导体 ≤6mΩ
工作电压	1000Vmax		外导体 ≤1.5mΩ
电压驻波比	≤1.30	机械寿命	500 次
插入力	≤8.9N	拔出力	≥0.55N

执行标准

质量等级	规范代号	适用产品类型
企军标	Q/Jc20032-2005	N 接电缆及接微带连接器
企军标	Q/Jc20608-2018	转接器
七专	Q/Jc20454-2014	接电缆连接器
七专	Q/Jc20455-2014	接微带连接器
七专	Q/Jc20456-2014	转接器
可靠性	LMS070400001-2013	N 接微带连接器
可靠性	LMS070400002-2013	N 接电缆连接器
可靠性	LMS070400019-2013	转接器

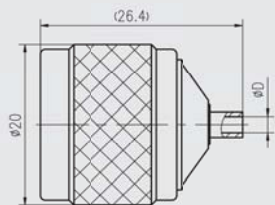
接口配合尺寸



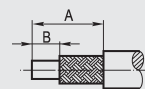
N 系列—接半钢电缆



N-JB2 等



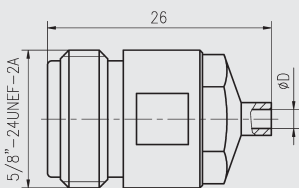
电缆剥线尺寸



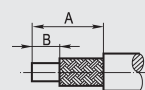
型 号	D	A	B	适配电缆
N-JB2	2.2	4	0	SFT-50-2-1
N-JB3	3.6	4	0.5	SFT-50-3-1



N-KB2 等



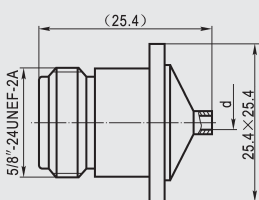
电缆剥线尺寸



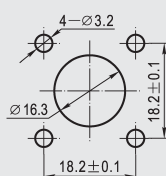
型 号	D	A	B	适配电缆
N-KB2	2.2	4.5	1	SFT-50-2-1
N-KB3	3.6	4	0.5	SFT-50-3-1



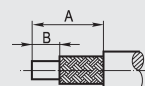
N-KFB2 等



安装开孔尺寸



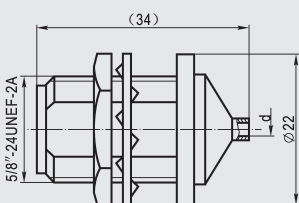
电缆剥线尺寸



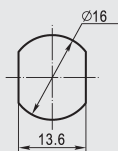
型 号	φd	A	B	适配电缆
N-KFB2	2.2	4.5	1	SFT-50-2-1
N-KFB3	3.6	4	0.5	SFT-50-3-1



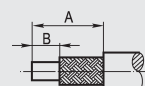
N-KYB2 等



安装开孔尺寸



电缆剥线尺寸

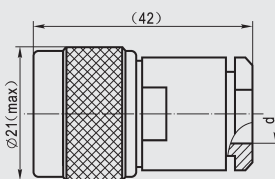


型 号	φd	A	B	适配电缆
N-KYB2	2.2	4.5	1	SFT-50-2-1
N-KYB3	3.6	4	0.5	SFT-50-3-1

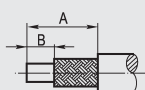
N 系列—电缆插头



N-J4 等



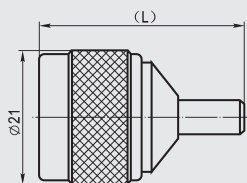
电缆剥线尺寸



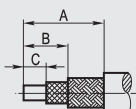
型 号	A	B	φd	适配电缆
N-J4	18	5.3	4.2	SFF-50-2-2
N-J5	16.6	4.6	5.2	SFF-50-3-1
N-J6	16.3	5.3	10.0	SYV-50-5
N-J7	17	5.3	10.5	SYV-50-7-1
N-J8	17	5.3	11.5	SYV-50-7-2
N-J27	16.3	5.3	7.3	SYV-50-5-1
N-J28	16.3	5.3	8.1	SYV-50-5-2



N-J3Y 等



电缆剥线尺寸

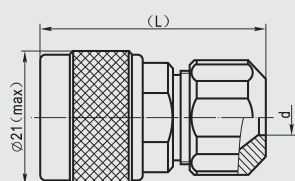


型 号	L	A	B	C	适配电缆
N-J3Y	28.6	16	9	3	SFF-50-1.5-1
N-J4Y	29.3	16	9	3	SFF-50-2-2
N-J5Y	29.8	15.2	7.7	4.6	SFF-50-3-1
N-J5YG	29.8	15.2	7.7	4.6	SFF-50-3-1

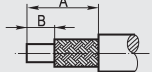
备注: N-J5YG 外壳为不锈钢。



N-J3A 等



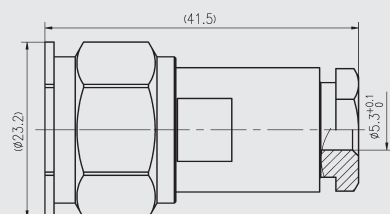
电缆剥线尺寸



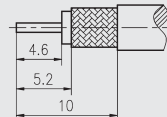
型 号	L	ϕd	A	B	适配电缆
N-J3A	37.4	3	5.3	16.5	SFF-50-1.5-1
N-J4A	38	4.2	5.3	16	SFF-50-2-2
N-J5A	38	5.3	4.6	15.7	SFF-50-3-1
N-J7A	37.5	10.5	5.3	15.5	SYV-50-7-1
N-J8A	37.5	11.5	5.3	15.5	SYV-50-7-2
N-J27A	37.4	7.3	5.3	14.8	SYV-50-5-1
N-J28A	37.4	8.1	5.3	14.8	SYV-50-5-2



N-J301S



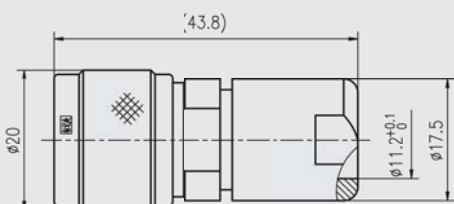
电缆剥线尺寸



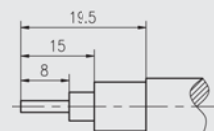
配接电缆: SUJ-50-3 或 SFCJ-50-3-51



N-J303A



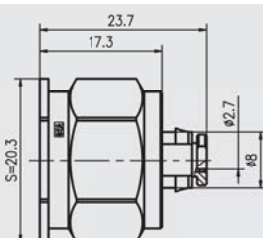
电缆剥线尺寸



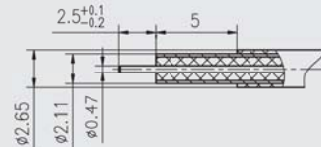
配接电缆: SUJ-50-7-5



N-JM26-10



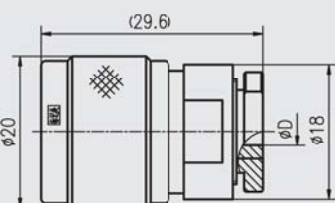
电缆剥线尺寸



配接电缆: MF86



N-J360 等



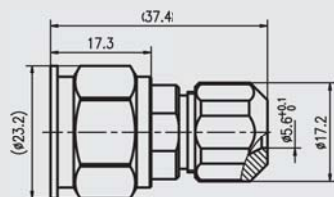
电缆剥线尺寸



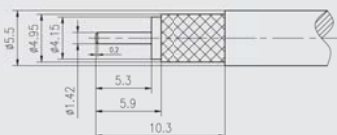
型 号	A	B	D	适配电缆
N-J360	5.3	10.3	3.7	FSE-360
N-J240	6.1	11.1	6.2	LRM240
N-J800	6.1	11.1	7.6	FSE-800



N-JM55-20



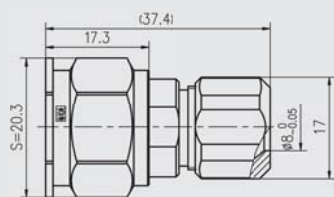
电缆剥线尺寸



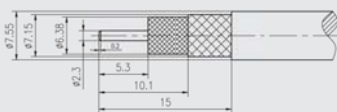
配接电缆:HT-B415



N-JM79-20



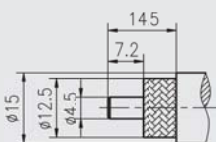
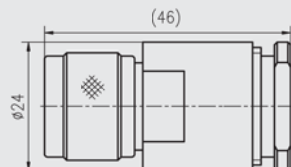
电缆剥线尺寸



配接电缆:MCC311A



N-J600

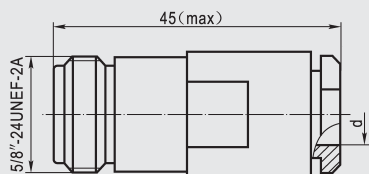


配接电缆:LRM600

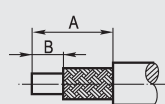
N 系列—电缆插座



N-K4等



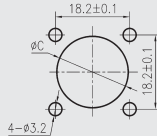
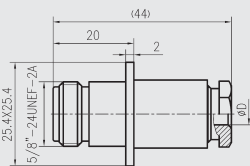
电缆剥线尺寸



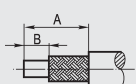
型 号	d	A	B	配接电缆型号
N-K4	$\phi 4.2$	18	5.3	SFF-50-2-2
N-K5	$\phi 5.2$	17.3	5.3	SYV-50-3
N-K6	$\phi 10.0$	10	5	SYV-50-5
N-K7	$\phi 10.5$	17	5.3	SYV-50-7-1
N-K8	$\phi 11.5$	17	5.3	SYV-50-7-2
N-K27	$\phi 7.3$	16.3	5.3	SYV-50-5-1
N-K28	$\phi 8.1$	16.3	5.3	SYV-50-5-2



N-KF4 等



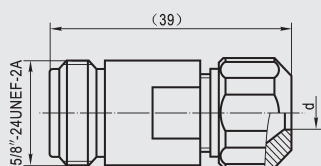
电缆剥线尺寸



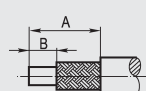
型 号	D	A	B	C	适配电缆
N-KF4	4.2	18	5.3	16.5	SFF-50-2-2
N-KF5	5.2	17.3	5.3	16.5	SFF-50-3-1
N-KF7	10.5	17	5.3	19.5	SYV-50-7-1
N-KF8	11.5	17	5.3	19.5	SYV-50-7-2
N-KF27	7.3	16.3	5.3	16.5	SYV-50-5-1
N-KF28	8.1	16.3	5.3	16.5	SYV-50-5-2



N-K3A 等



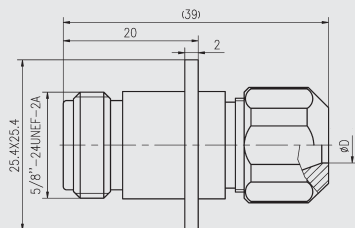
电缆剥线尺寸



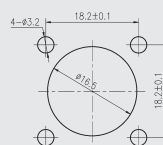
型 号	ϕd	A	B	适配电缆
N-K3A	3	16.5	5.3	SFF-50-1.5-1
N-K4A	4.2	16	5.3	SFF-50-2-2
N-K5A	5.2	15.7	5.3	SFF-50-3-1
N-K7A	10.5	15.5	5.3	SYV-50-7-1
N-K8A	11.5	15.5	5.3	SYV-50-7-2
N-K27A	7.3	14.8	5.3	SYV-50-5-1
N-K28A	8.1	14.8	5.3	SYV-50-5-2



N-KF3A 等



安装开孔尺寸



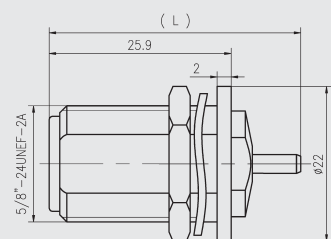
电缆剥线尺寸



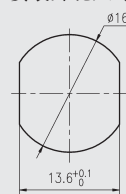
型 号	D	A	B	适配电缆
N-KF3A	3	16.5	5.3	SFF-50-1.5-1
N-KF4A	4.2	16	5.3	SFF-50-2-2
N-KF5A	5.2	15.7	5.3	SFF-50-3-1
N-KF7A	10.5	15.5	5.3	SYV-50-7-1
N-KF8A	11.5	15.5	5.3	SYV-50-7-2
N-KF27A	7.3	14.8	5.3	SYV-50-5-1
N-KF28A	8.1	14.8	5.3	SYV-50-5-2
N-KF55-20	5.6	10.3	5.3	HT-B415
N-KF79-20	8	15	5.3	FSE-800



N-KY3Y 等



安装开孔尺寸



电缆剥线尺寸

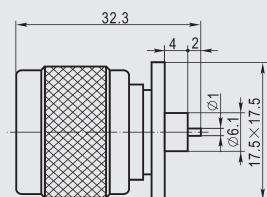


型 号	L	A	B	C	适配电缆
N-KY3Y	35.8	16	9	3	SFF-50-1.5-1
N-KY4Y	36.2	16	9	3	SFF-50-2-2
N-KY5Y	36.7	15.2	7.7	4.6	SFF-50-3-1

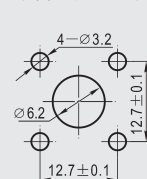
N 系列—微带插头



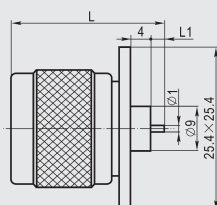
N-50JFD



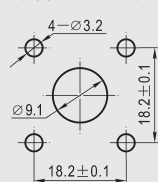
安装开孔尺寸



N-50JFD1 等



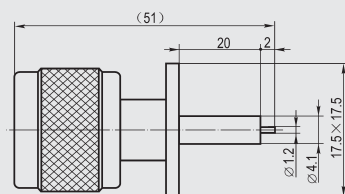
安装开孔尺寸



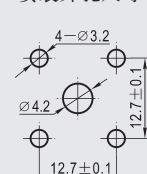
型 号	L	L1
N-50JFD1	26.2	1.8
N-50JFD2	29.9	5.5



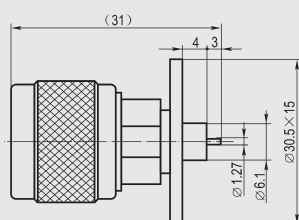
N-50JFD3



安装开孔尺寸



N-50JFD4

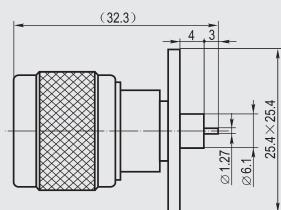


安装开孔尺寸

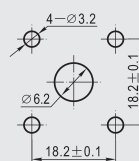




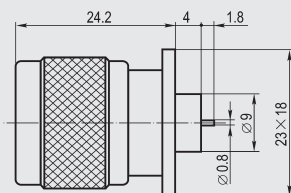
N-50JFD5



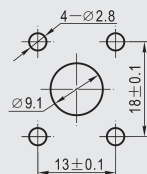
安装开孔尺寸



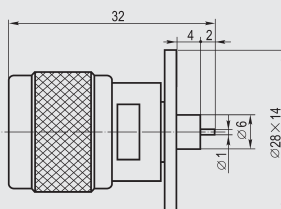
N-50JFD6



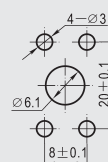
安装开孔尺寸



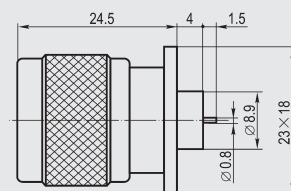
N-50JFD7



安装开孔尺寸



N-50JFD8



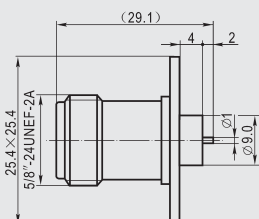
安装开孔尺寸



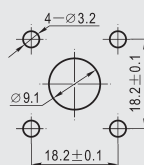
N 系列—微带插座



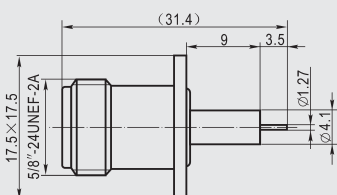
N-50KFD



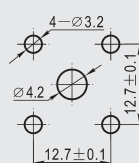
安装开孔尺寸



N-50KFD1

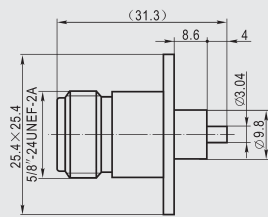


安装开孔尺寸

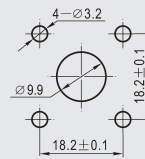




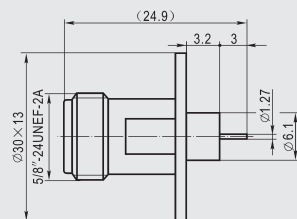
N-50KFD2



安装开孔尺寸



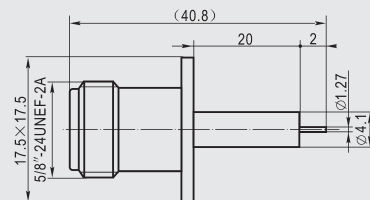
N-50KFD2A



安装开孔尺寸



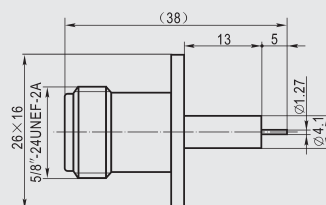
N-50KFD3



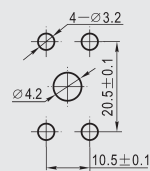
安装开孔尺寸



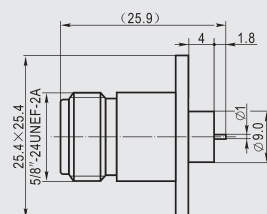
N-50KFD4



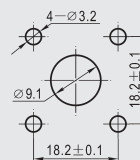
安装开孔尺寸



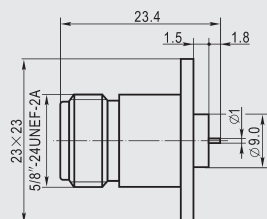
N-50KFD5



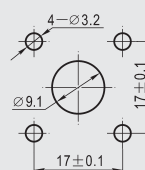
安装开孔尺寸



N-50KFD5A

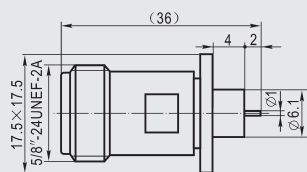


安装开孔尺寸

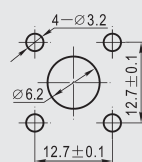




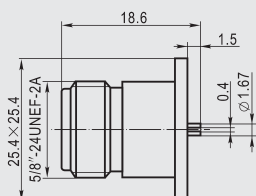
N-50KFD6



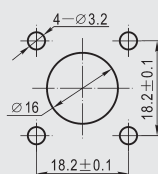
安装开孔尺寸



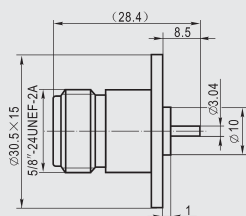
N-50KFD7



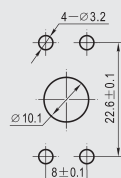
安装开孔尺寸



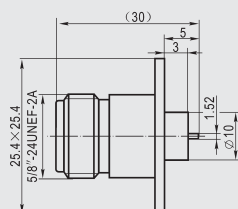
N-50KFD8



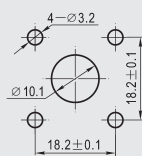
安装开孔尺寸



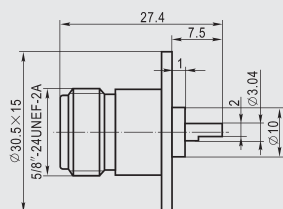
N-50KFD9



安装开孔尺寸



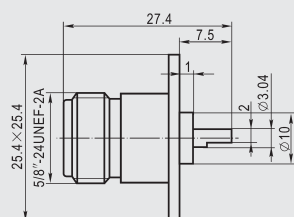
N-50KFD10



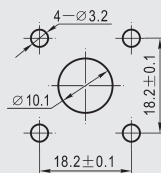
安装开孔尺寸



N-50KFD11

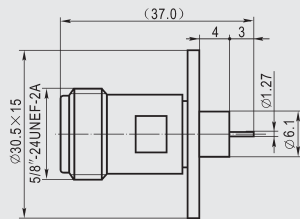


安装开孔尺寸





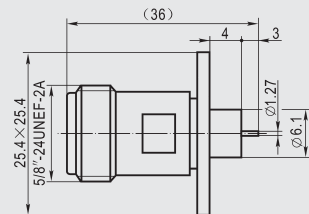
N-50KFD12



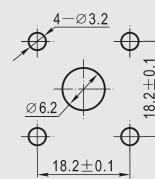
安装开孔尺寸



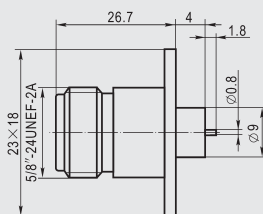
N-50KFD13



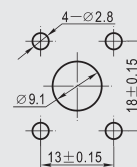
安装开孔尺寸



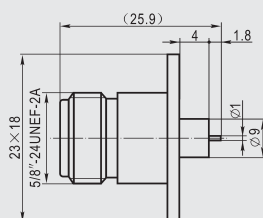
N-50KFD14



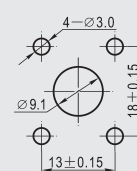
安装开孔尺寸



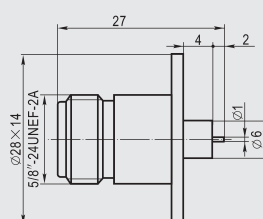
N-50KFD16



安装开孔尺寸



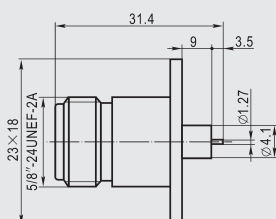
N-50KFD17



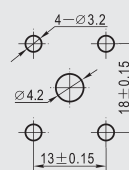
安装开孔尺寸



N-50KFD18

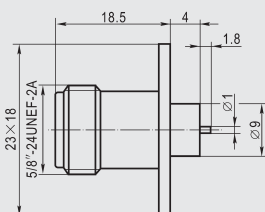


安装开孔尺寸

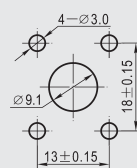




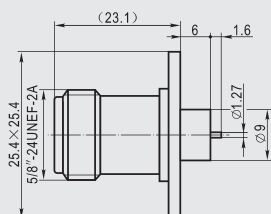
N-50KFD19



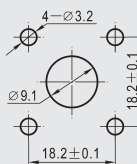
安装开孔尺寸



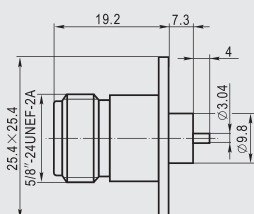
N-50KFD20



安装开孔尺寸



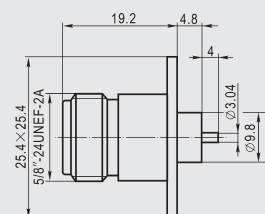
N-50KFD21



安装开孔尺寸



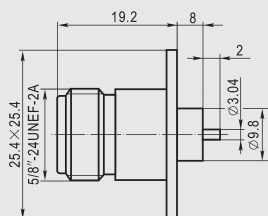
N-50KFD22



安装开孔尺寸



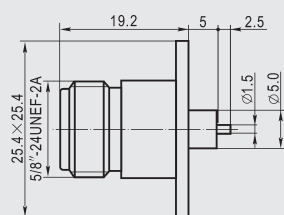
N-50KFD26



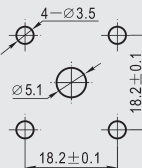
安装开孔尺寸



N-50KFD28

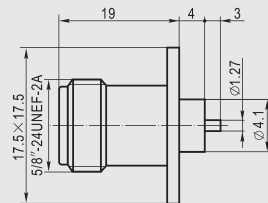


安装开孔尺寸

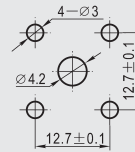




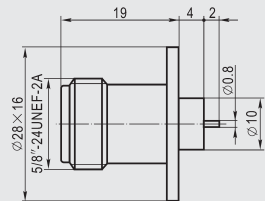
N-50KFD29



安装开孔尺寸



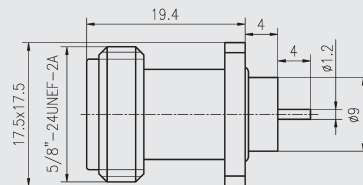
N-50KFD33C



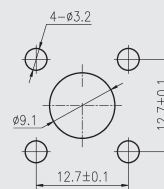
安装开孔尺寸



N(M)-50KFD



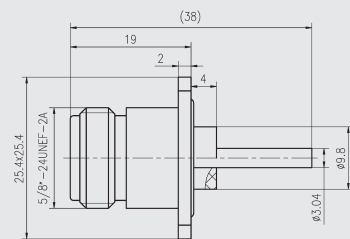
安装开孔尺寸



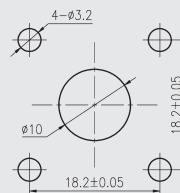
注:气密封连接器。



N(m)-KFD409



安装开孔尺寸



注:水密封连接器。