

SMA 系列射频同轴连接器

概述

SMA 系列射频同轴连接器具有体积小、频带宽、机械和电气性能优越、可靠性高等优点，是应用最广泛的射频连接器。产品可适用于微波通讯，航天航海，武器系统及微波测量设备等领域。

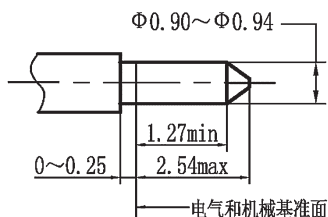
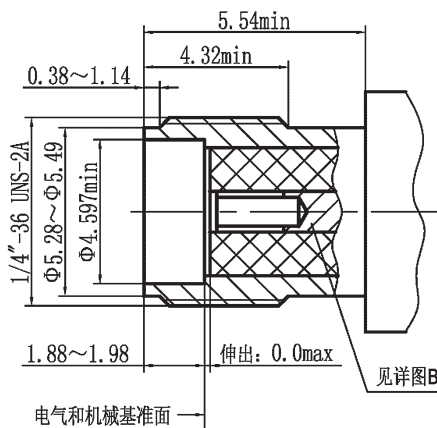
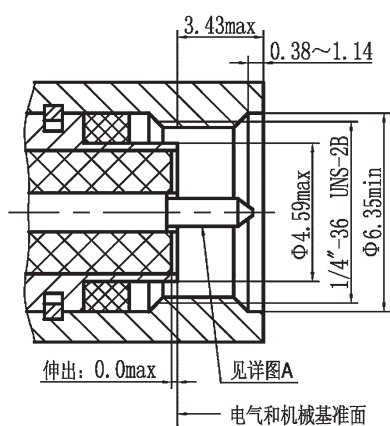
主要技术特征

执行标准

质量等级	规范代号	适用产品类型
企军标	Q/Jc351-2004	SMA 接电缆及接微带连接器
企军标	Q/Jc20034-2006	SMA 系列内转接器
七专	Q/Jc20454-2014	接电缆连接器
七专	Q/Jc20455-2014	接微带连接器
七专	Q/Jc20456-2014	转接器
可靠性	LMS070400007-2013	SMA 接微带连接器
可靠性	LMS070400008-2013	SMA 接电缆连接器
可靠性	LMS070400019-2013	转接器
SAST	SASTYPS0702/0017-2015	SMA 接电缆连接器
CAST	CASTPS05/964-2012	SMA 接电缆连接器
宇标	Q/QJA 20116/8-2018	SMA 接微带连接器
宇标	Q/QJA 20116/6-2018	SMA 接电缆连接器
宇标	Q/QJA 20116/7-2018	SMA 转接器

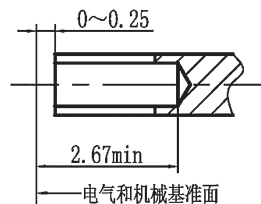
特性阻抗		50Ω/75Ω	工作温度		-65~+165℃
频率范围	软电缆	DC~12.4GHz	接触电阻 (铜合金)	内导体	≤6mΩ
	半刚、半柔电缆	DC~18GHz		外导体	≤2mΩ
工作电压	标准大气压	335V	介质耐压 (标准条件)		1000Vmax
	4.4KPa (21000m)	85V	绝缘电阻 (标准条件)		≥5000MΩ
电压驻波比	软电缆	≤1.15+0.02F	螺纹拧紧力矩		0.79~1.13N·m
	半刚、半柔电缆直头	≤1.10+0.01F	机械寿命		500 次

接口配合尺寸



详图A 插针接触件

SMA系列插针连接器界面



详图B 插孔接触件

SMA系列插孔连接器界面

材料及镀层

中心接触件	插针	铜合金，镀金	绝缘体	聚四氟乙烯、玻璃、PEI
	插孔	铍青铜，镀金	线夹	黄铜，镀镍
壳体和其他金属部件		铜合金，镀金或镀镍	密封圈	硅橡胶
		不锈钢，钝化		

SMA 系列产品查找索引

插头

SMA 系列——接半刚半柔电缆插头·····	34
SMA 系列——接柔性电缆插头·····	36
SMA 系列——接微带插头·····	39

插座

SMA 系列——接半刚半柔电缆插座·····	41
SMA 系列——接柔性电缆插座·····	42
SMA 系列——微带插座：四孔法兰盘安装 直式金属凸台·····	44
SMA 系列——微带插座：四孔法兰盘安装 直式非金属凸台·····	46
SMA 系列——微带插座：四孔法兰盘安装 直式无凸台·····	48
SMA 系列——微带插座：四孔法兰盘安装 直角弯式·····	50
SMA 系列——微带插座：两孔法兰盘安装 直式金属凸台·····	51
SMA 系列——微带插座：两孔法兰盘安装 直式非金属凸台·····	53
SMA 系列——微带插座：两孔法兰盘安装 直式无凸台·····	54
SMA 系列——微带插座：螺母安装 直式·····	55
SMA 系列——微带插座：焊接安装 直式·····	57
SMA 系列——微带插座：四孔法兰盘安装 气密封·····	59
SMA 系列——微带插座：四孔法兰盘安装 水密封·····	59
SMA 系列——微带插座：其他特殊形式·····	60

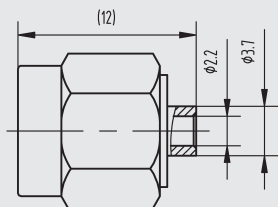
转接器

SMA 系列——系列内转接器·····	60
---------------------	----

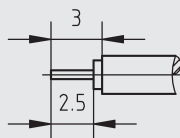
SMA 系列——接半刚半柔电缆插头



SMA-JB2



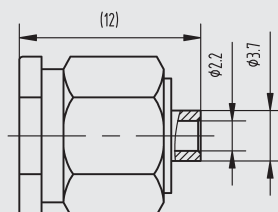
电缆剥线尺寸



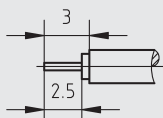
型 号	适配电缆
SMA-JB2	SFT-50-2-1, .086



SMA-JCB2



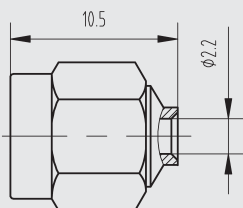
电缆剥线尺寸



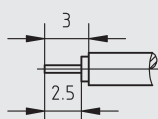
型 号	适配电缆
SMA-JCB2	SFT-50-2-1, .086



SMA-JB2-1



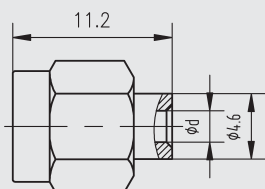
电缆剥线尺寸



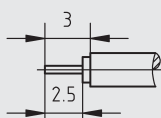
型 号	适配电缆	备注
SMA-JB2-1	SFT-50-2-1, .086	螺套为不锈钢



SMA-JB2A



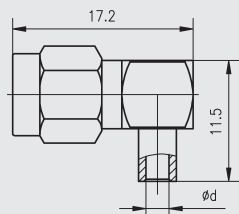
电缆剥线尺寸



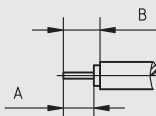
型 号	d	适配电缆
SMA-JB2A	2.2	SFT-50-2-1, .086
SMA-JB3D	3.6	SFT-50-3-1, .141



SMA-JWB2



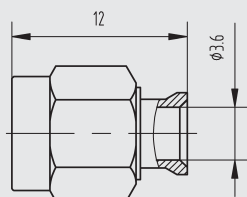
电缆剥线尺寸



型 号	d	A	B	适配电缆
SMA-JWB2	2.2	1.4	2.2	SFT-50-2-1, .086
SMA-JWB3	3.6	2.7	3.2	SFT-50-3-1, .141



SMA-JB3



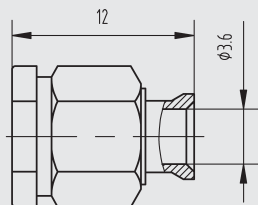
电缆剥线尺寸



型 号	适配电缆
SMA-JB3	SFT-50-3-1, .141



SMA-JCB3



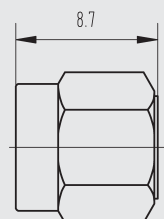
电缆剥线尺寸



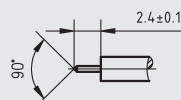
型 号	适配电缆
SMA-JCB3	SFT-50-3-1, .141



SMA-JB3A



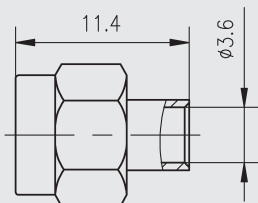
电缆剥线尺寸



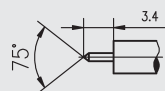
型 号	适配电缆	备注
SMA-JB3A	SFT-50-3-1, .141	无插针
SMA-JB3B	SFT-50-3-1, .141	无插针, 螺套可退



SMA-JB3-1



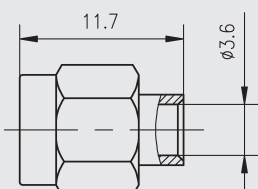
电缆剥线尺寸



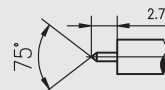
型 号	适配电缆	备注
SMA-JB3-1	SFT-50-3-1, .141	螺套可退



SMA-JB3-2



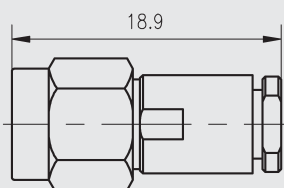
电缆剥线尺寸



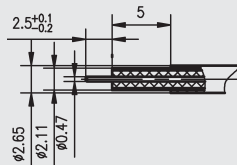
型 号	适配电缆
SMA-JB3-2	SFT-50-3-1, .141



SMA-JM26-10



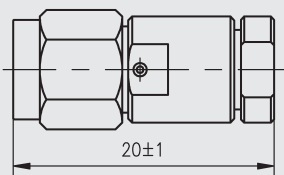
电缆剥线尺寸



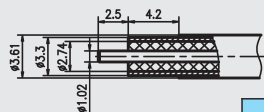
型 号	适配电缆
SMA-JM26-10	MF86



SMA-JM36-13



电缆剥线尺寸

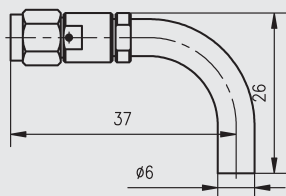


型 号	适配电缆
SMA-JM36-13	UFB142A

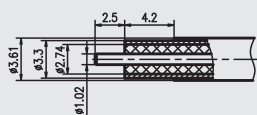
SMA 系列——接柔性电缆插头



SMA-JWM36-13



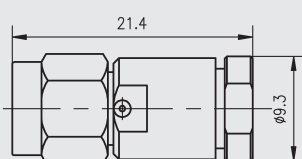
电缆剥线尺寸



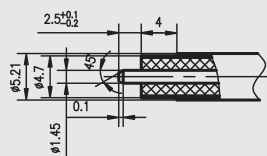
型 号	适配电缆
SMA-JWM36-13	UFB142A



SMA-JM52-13



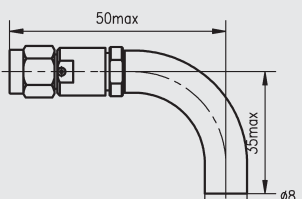
电缆剥线尺寸



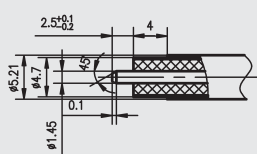
型 号	适配电缆
SMA-JM52-13	MCC205A



SMA-JWM52-13



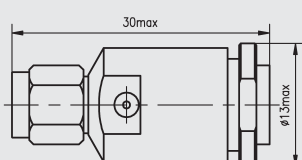
电缆剥线尺寸



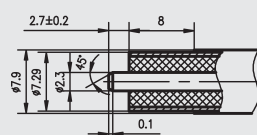
型 号	适配电缆
SMA-JWM52-13	MCC205A



SMA-JM79-13



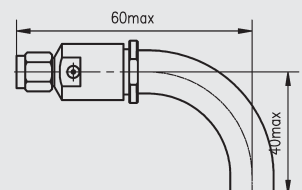
电缆剥线尺寸



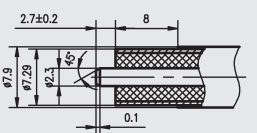
型 号	适配电缆
SMA-JM79-13	MCC311A



SMA-JWM79-13



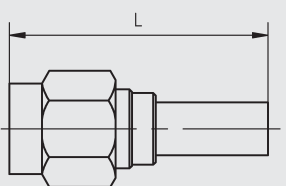
电缆剥线尺寸



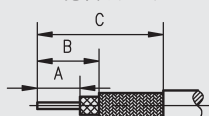
型 号	适配电缆
SMA-JWM79-13	MCC311A



SMA-J3 等



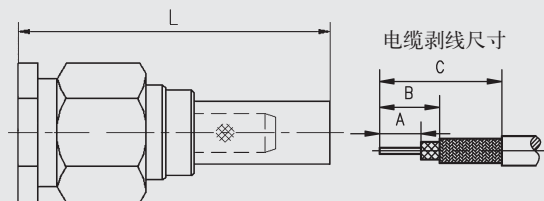
电缆剥线尺寸



型 号	A	B	C	L	适配电缆
SMA-J3	3.6	5.2	10.6	21	SFF-50-1.5-1
SMA-J4	2.5	4.7	12.7	23.6	SFF-50-2-2
SMA-J5	2.5	4.5	14.5	25.6	SFF-50-3-1



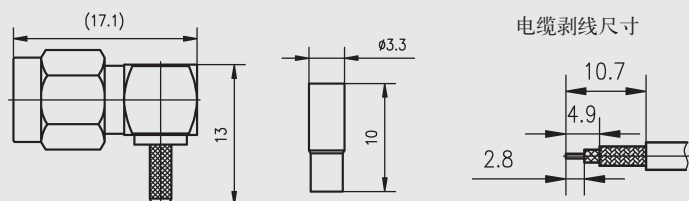
SMA-JC3 等



型 号	A	B	C	L	适配电缆
SMA-JC3	3.6	5.2	10.6	20.7	SFF-50-1.5-1
SMA-JC4	2.5	4.7	12.7	23.6	SFF-50-2-2
SMA-JC5	2.5	4.5	14.5	25.6	SFF-50-3-1



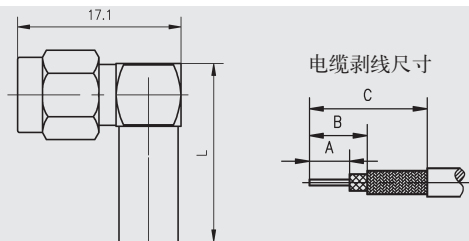
SMA-JW2



型 号	适配电缆
SMA-JW2	SFF-50-1



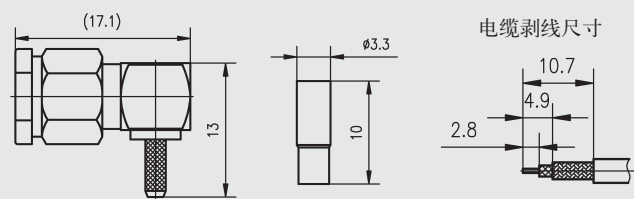
SMA-JW3 等



型 号	A	B	C	L	适配电缆
SMA-JW3	3	4.7	10.8	16	SFF-50-1.5-1
SMA-JW4	3	5.6	13.6	19	SFF-50-2-2
SMA-JW5	3	5.6	13.6	19	SFF-50-3-1



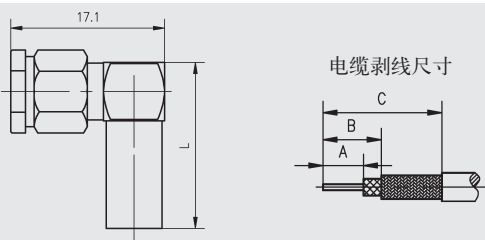
SMA-JWC2



型 号	适配电缆
SMA-JWC2	SFF-50-1



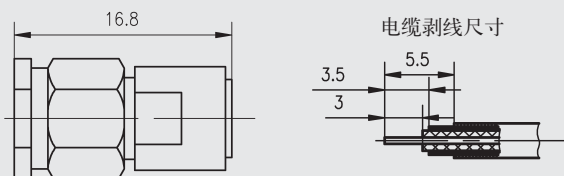
SMA-JWC3 等



型 号	A	B	C	L	适配电缆
SMA-JWC3	3	4.7	10.8	16	SFF-50-1.5-1
SMA-JWC4	3	5.6	13.6	19	SFF-50-2-2
SMA-JWC5	3	5.6	13.6	19	SFF-50-3-1



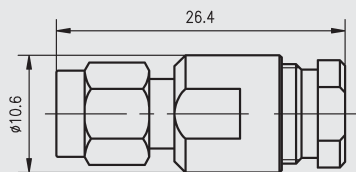
SMA-JC3T



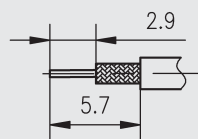
型 号	适配电缆
SMA-JC3T	SFF-50-1.5-1



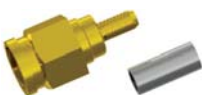
SMA-J301



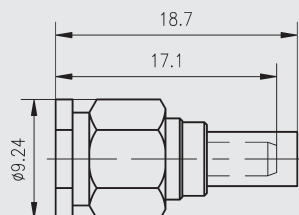
电缆剥线尺寸



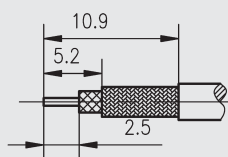
型 号	适配电缆
SMA-J301	SUC-50-3-5



SMA-75JC3



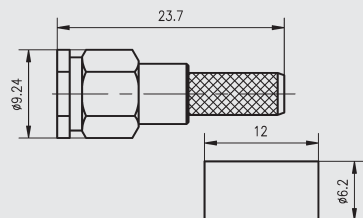
电缆剥线尺寸



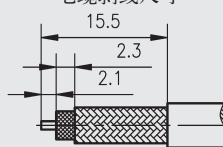
型 号	适配电缆
SMA-75JC3	SFF-75-1.5-1



SMA-75JC5



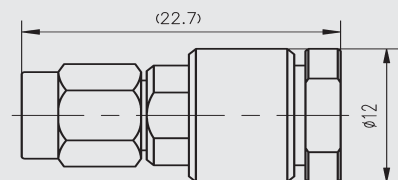
电缆剥线尺寸



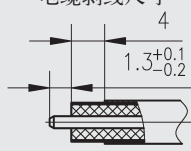
型 号	适配电缆
SMA-75JC5	SFF-75-3-1



SMA-J240



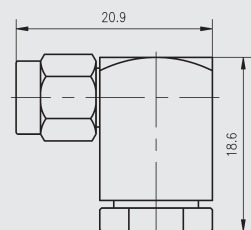
电缆剥线尺寸



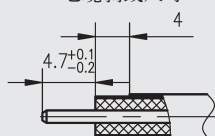
型 号	适配电缆
SMA-J240	LMR240



SMA-JW240



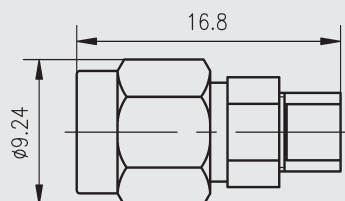
电缆剥线尺寸



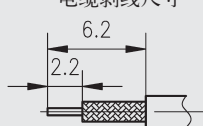
型 号	适配电缆
SMA-JW240	LMR240



SMA-J3B



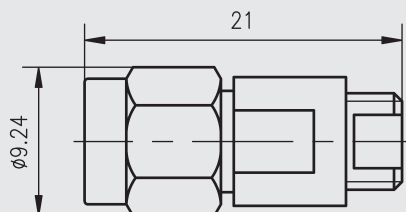
电缆剥线尺寸



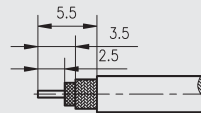
型 号	适配电缆
SMA-J3B	SFF-50-1.5-1



JSMA-J2-H 等



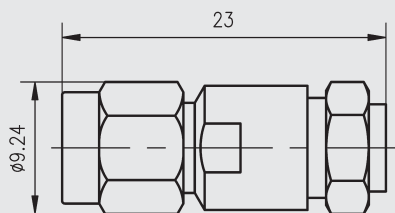
电缆剥线尺寸



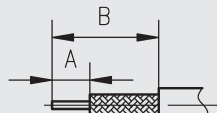
型 号	适配电缆
JSMA-J2-H	CF-100
JSMA-J2a-H	CF-100



JSMA-J3-H 等



电缆剥线尺寸

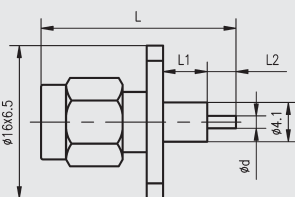


型 号	A	B	适配电缆
JSMA-J3-H	3.0	9.0	CF-135
JSMA-J4-H	3.0	9.0	CF-160
JSMA-J5-H	2.8	8.8	CF-210

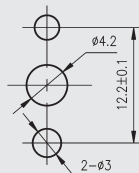
SMA 系列——接微带插头



SMA-JFD 等



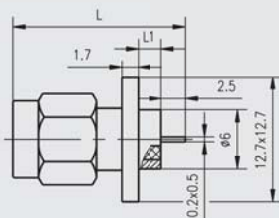
安装开孔尺寸



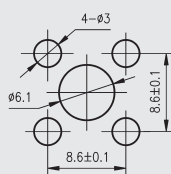
型 号	L	L1	L2	d
SMA-JFD	25.4	8.6	4	1.3
SMA-JFD23	18.7	2.0	4	1.3
SMA-JFD28	20.7	5.2	3.0	0.8
SMA-JFD53	20.7	6.0	2.0	1.3
SMA-JFD60	20.5	5.0	2.7	1.3



SMA-JFD1 等



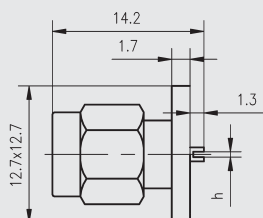
安装开孔尺寸



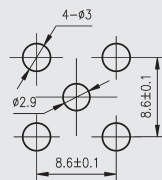
型 号	L	L1
SMA-JFD1	17.8	2.4
SMA-JFD2	18.6	3.2
SMA-JFD3	20.2	4.8
SMA-JFD4	19.4	4.0



SMA-JFD5 等



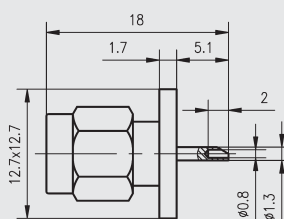
安装开孔尺寸



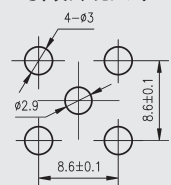
型 号	h
SMA-JFD5	0.5
SMA-JFD9	0.2



SMA-JFD6

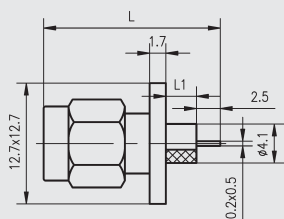


安装开孔尺寸

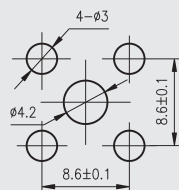




SMA-JFD7 等



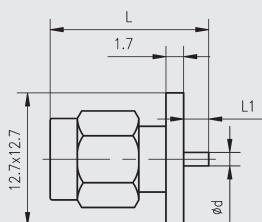
安装开孔尺寸



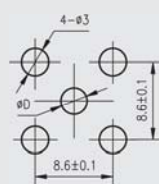
型号	L	L1
SMA-JFD7	18.6	3.2
SMA-JFD8	19.4	4.0
SMA-JFD21	17.9	2.4



SMA-JFD10 等



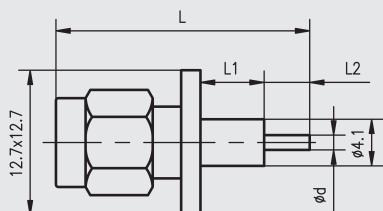
安装开孔尺寸



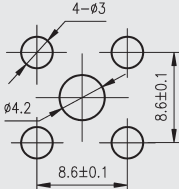
型号	L	L1	d	D
SMA-JFD10	16.7	4.0	1.3	2.9
SMA-JFD24	14.3	1.6	0.9	2.1
SMA-JFD25	13.9	1.2	0.8	1.8
SMA-JFD25A	13.6	0.9	0.5	1.2



SMA-JFD11 等



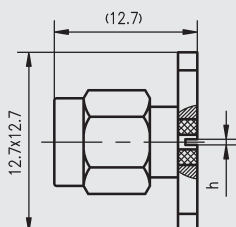
安装开孔尺寸



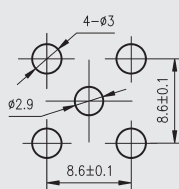
型号	L	L1	L2	d
SMA-JFD11	18.7	2	4.0	1.3
SMA-JFD12	23.1	8.4	2.0	1.3
SMA-JFD13	25.1	8.4	4.0	1.3
SMA-JFD14	17.3	4.0	0.6	0.4
SMA-JFD83	24.9	4.0	8.0	1.3
SMA-JFD84	23.9	3.0	8.0	1.3



SMA-JFD15 等



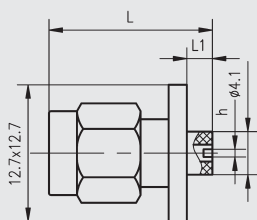
安装开孔尺寸



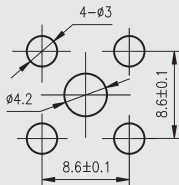
型号	h
SMA-JFD15	0.2
SMA-JFD16	0.4



SMA-JFD17 等



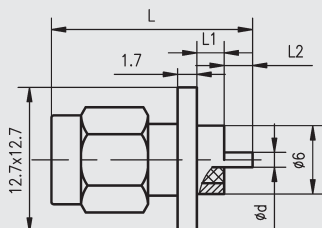
安装开孔尺寸



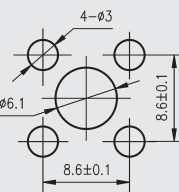
型号	L	L1	h
SMA-JFD17	15.7	3.0	0.2
SMA-JFD71	14.9	2.0	0.4



SMA-JFD18 等



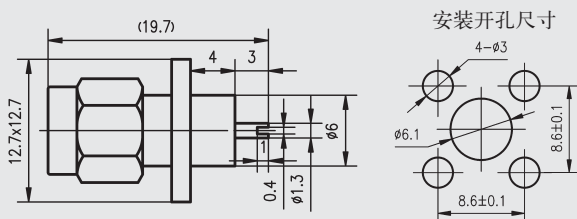
安装开孔尺寸



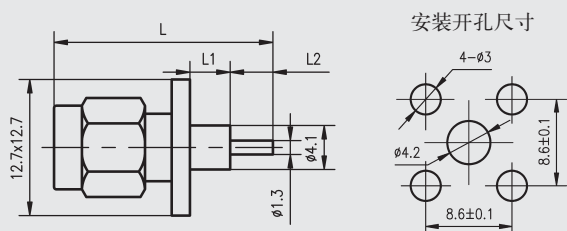
型号	L	L1	L2	d
SMA-JFD18	18.9	3.2	3.0	1.3
SMA-JFD19	19.2	4.0	2.5	1.3
SMA-JFD27	17.6	2.4	2.5	1.0
SMA-JFD30	17.2	3.0	1.5	0.7
SMA-JFD64	18.4	1.0	4.5	1.3



SMA-JFD20



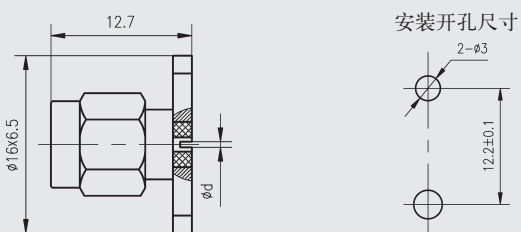
SMA-JFD22A



型 号	L	L1	L2
SMA-JFD22A	30.9	15	3.0
SMA-JFD34	25.0	8.4	4.0
SMA-JFD35	25.0	5.0	4.5
SMA-JFD37	22.4	7.5	2.0
SMA-JFD73	18.9	4.0	2.0



SMA-JFD38 等

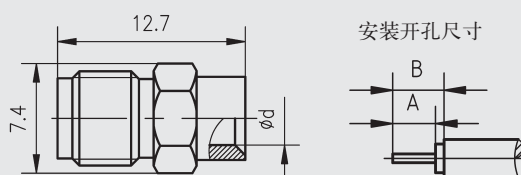


型 号	d	配接插针
SMA-JFD38	0.4	φ 0.38 ~ φ 0.4
SMA-JFD52	0.9	φ 0.9 ~ φ 0.93
SMA-JFD69	0.8	φ 0.8 ~ φ 0.83
SMA-JFD79	0.5	φ 0.48 ~ φ 0.52

SMA 系列——接半刚半柔电缆插座



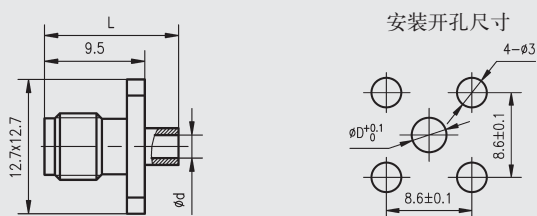
SMA-KB2 等



型 号	A	B	d	适配电线
SMA-KB2	2.5	3	2.2	SFT-50-2-1
SMA-KB3	3	3	3.6	SFT-50-3-1



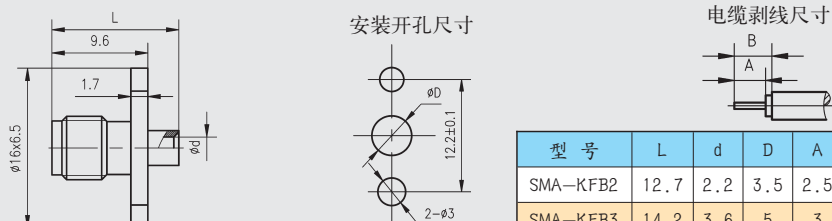
SMA-KFB1 等



型 号	L	d	D	适配电线
SMA-KFB1	12.1	1.2	3.2	SFT-50-1
SMA-KFB2a	12.7	2.2	3.5	SFT-50-2-1
SMA-KFB3a	14.2	3.6	5.0	SFT-50-3-1



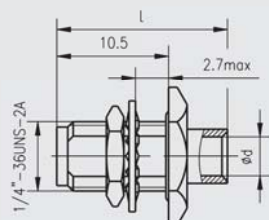
SMA-KFB2 等



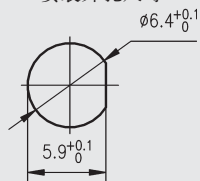
型 号	L	d	D	A	B	适配电线
SMA-KFB2	12.7	2.2	3.5	2.5	3	SFT-50-2-1
SMA-KFB3	14.2	3.6	5	3	3	SFT-50-3-1



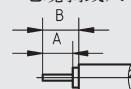
SMA-KYB2等



安装开孔尺寸



电缆剥线尺寸

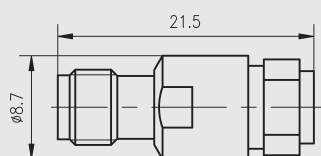


型号	L	d	A	B	适配电缆
SMA-KYB2	19	2.2	2.5	3	SFT-50-2-1
SMA-KYB3	19	3.6	3	3	SFT-50-3-1
SMA-KYB3A	15.9	3.6	3	3	SFT-50-3-1

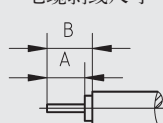
SMA 系列——接柔性电缆插座



JSMA-K3-H等



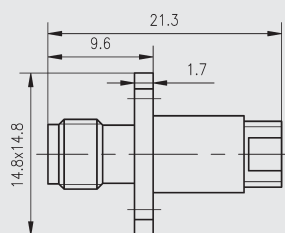
电缆剥线尺寸



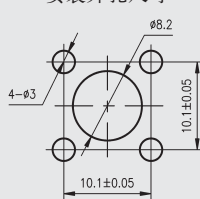
型号	A	B	适配电缆
JSMA-K3-H	3	9	CF-135
JSMA-K4-H	3	9	CF-160
JSMA-K5-H	2.8	8.8	CF-210



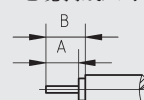
JSMA-KF2-H



安装开孔尺寸



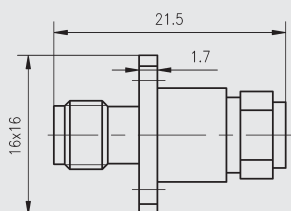
电缆剥线尺寸



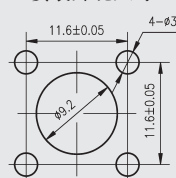
型号	适配电缆
JSMA-KF2-H	CF-100



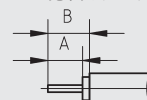
JSMA-KF3-H等



安装开孔尺寸



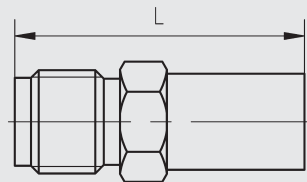
电缆剥线尺寸



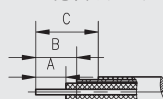
型号	A	B	适配电缆
JSMA-KF3-H	3	9	CF-135
JSMA-KF4-H	3	9	CF-160
JSMA-KF5-H	2.8	8.8	CF-210



SMA-K3等



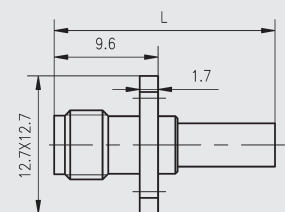
电缆剥线尺寸



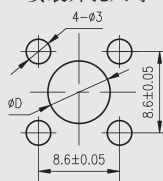
型号	A	B	C	L	适配电缆
SMA-K3	2.8	4.5	10.5	19.7	SFF-50-1.5-1
SMA-K4	3	3.5	11.4	20	SFF-50-2-2
SMA-K5	3	3.5	11.4	21.4	SFF-50-3-1



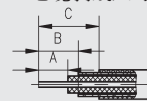
SMA-KF3等



安装开孔尺寸



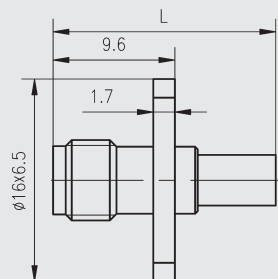
电缆剥线尺寸



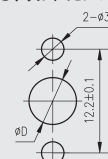
型号	A	B	C	L	D	适配电缆
SMA-KF3	2.8	4.5	10.5	20.4	5.5	SFF-50-1.5-1
SMA-KF4	3	3.5	11.4	20	6.2	SFF-50-2-2
SMA-KF5	3	3.5	11.4	22	7.2	SFF-50-3-1



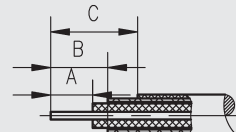
SMA-KF3T等



安装开孔尺寸



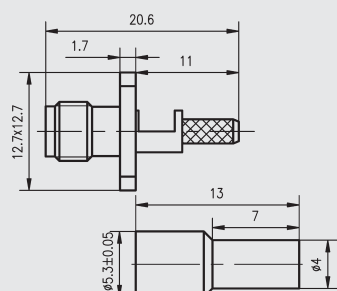
电缆剥线尺寸



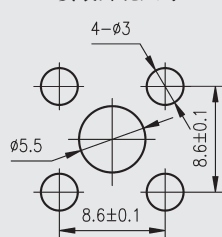
型 号	A	B	C	L	D	适配电缆
SMA-KF3T	2.8	4.5	10.5	20.4	5.5	SFF-50-1.5-1
SMA-KF4T	3	3.5	11.4	20	6.2	SFF-50-2-2
SMA-KF5T	3	3.5	11.4	22	7.2	SFF-50-3-1



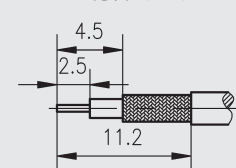
SMA-KF3-2



安装开孔尺寸



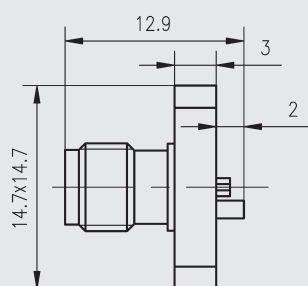
电缆剥线尺寸



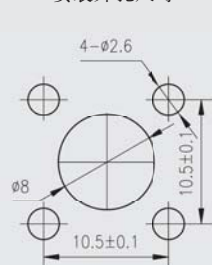
适配电缆: SFF-50-1.5-1



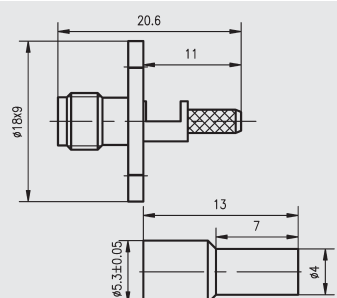
SMA-KF3-4



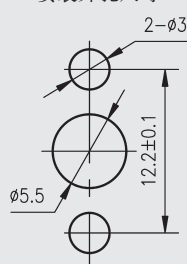
安装开孔尺寸



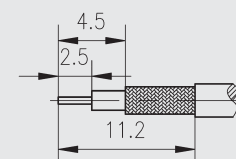
SMA-KF3-11



安装开孔尺寸



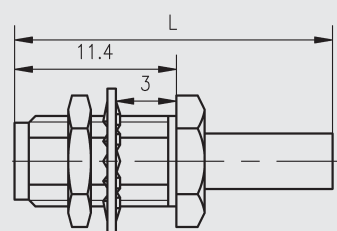
电缆剥线尺寸



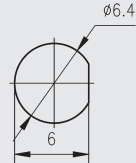
适配电缆: SFF-50-1.5-1



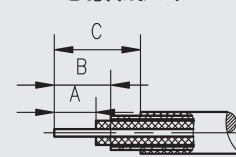
SMA-KY3等



安装开孔尺寸



电缆剥线尺寸

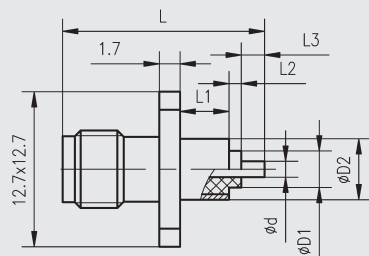


型 号	A	B	C	L	适配电缆
SMA-KY3	2.8	6.1	12.1	22.4	SFF-50-1.5-1
SMA-KY4	3	3.5	11.4	24	SFF-50-2-2
SMA-KY5	3	3.5	11.4	26	SFF-50-3-1

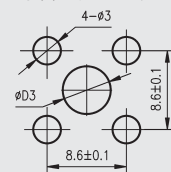
SMA 系列——微带插座：四孔法兰盘安装 直式金属凸台



SMA-KFD7 等



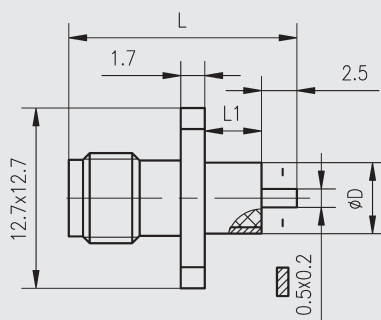
安装开孔尺寸



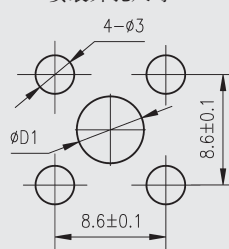
型 号	L	L1	L2	L3	d	D1	D2	D3
SMA-KFD-2.5	18.0	2.5	0	2.5	1.3	---	6	6.1
SMA-KFD7	16.5	4.0	1	2	1.3	3.0	5.1	5.2
SMA-KFD19	15.5	4.0	0	2.0	1.3	---	6	6.1
SMA-KFD29	15.8	3.2	0	3.0	1.3	---	6	6.1
SMA-KFD54	14.5	2.4	0	2.5	1.0	---	6	6.1
SMA-KFD76	14.0	3.0	0	1.5	0.7	---	6	6.1
SMA-KFD76AG	14.0	3.0	0	1.5	0.7	---	6	6.1
SMA-KFD95	15.1	4.0	0	1.5	0.8	---	6	6.1
SMA-KFD133G	14	3.2	0	1.2	1.3	---	6	6.1
SMA-KFD160	15.5	4.0	0	2.0	1.0	---	6	6.1
SMA-KFD161	18.5	4.0	0	5.0	1.0	---	6	6.1
SMA-KFD162	22.5	4.0	0	9.0	1.0	---	6	6.1
SMA-KFD179	15.5	3.0	0	3.0	1.0	---	6	6.1
SMA-KFD194	18.5	4.0	0	5.0	1.3	---	6	6.1
SMA-KFD198	15.6	4.0	0	2.0	0.8	---	4.8	4.9
SMA-KFD202	14.3	4.0	0	0.8	0.6	---	4.0	4.1
SMA-KFD207G	15.5	4	0	1.3	0.8	---	4.1	4.2
SMA-KFD277	15.0	4.0	0	1.5	0.7	---	6	6.1
SMA-KFD279	14.5	2.4	0	2.4	0.5	---	5.2	5.3
SMA-KFD281	18.5	3.0	0	6.0	1.3	---	6	6.1



SMA-KFD9 等



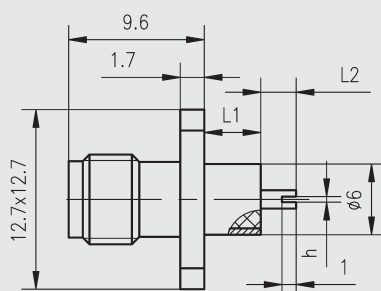
安装开孔尺寸



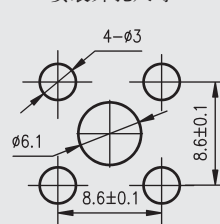
型 号	L	L1	D	D1
SMA-KFD9	14.5	2.4	6	6.1
SMA-KFD10	15.3	3.2	6	6.1
SMA-KFD11	16.9	4.8	6	6.1
SMA-KFD12	16.1	4.0	6	6.1
SMA-KFD87	15	3.0	6	6.1



SMA-KFD30 等



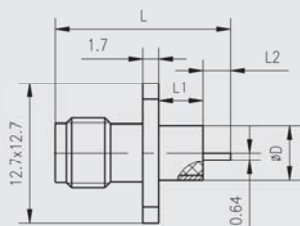
安装开孔尺寸



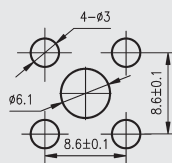
型 号	L1	L2	h
SMA-KFD30	4.0	3.0	0.4
SMA-KFD34	1.0	1.0	0.4



SMA-KFD90 等



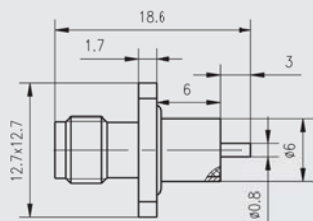
安装开孔尺寸



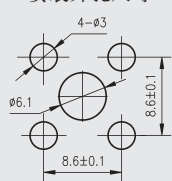
型号	L	L1	L2
SMA-KFD90	15.3	3.2	2.5
SMA-KFD90G	15.3	3.2	2.5
SMA-KFD129	15.6	4.0	2.0
SMA-KFD145	15.1	3.0	2.5
SMA-KFD251	17.0	5.0	2.5
SMA-KFD270G	16.0	4.0	2.5
SMA-KFD297	17.6	5.0	3.0



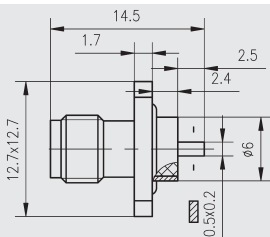
SMA-KFD154



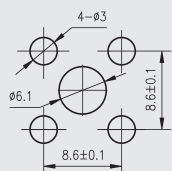
安装开孔尺寸



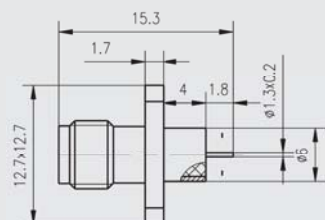
SMA-KFD155G



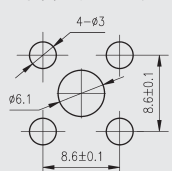
安装开孔尺寸



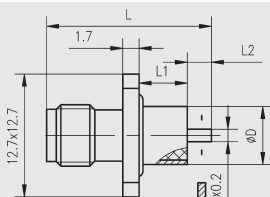
SMA-KFD163



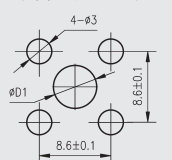
安装开孔尺寸



SMA-KFD181 等



安装开孔尺寸

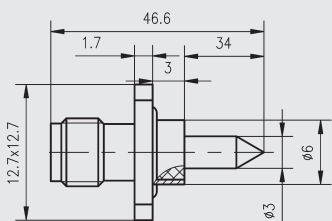


型号	L	L1	L2	D	D1
SMA-KFD181	17.1	5	2.5	6	6.1
SMA-KFD181G	17.1	5	2.5	6	6.1

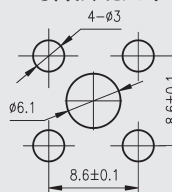
注：SMA-KFD181G 外壳材料为不锈钢。



SMA-KFD183

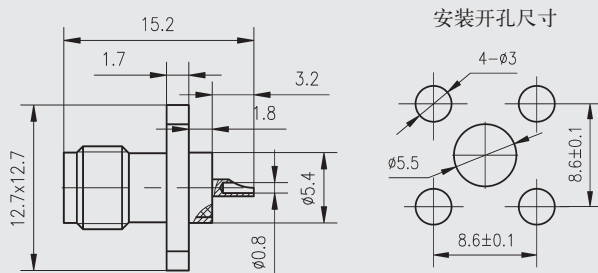


安装开孔尺寸

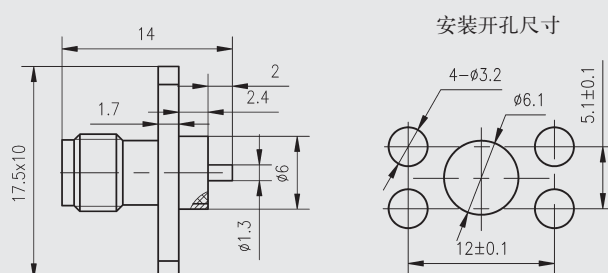




SMA-KFD188



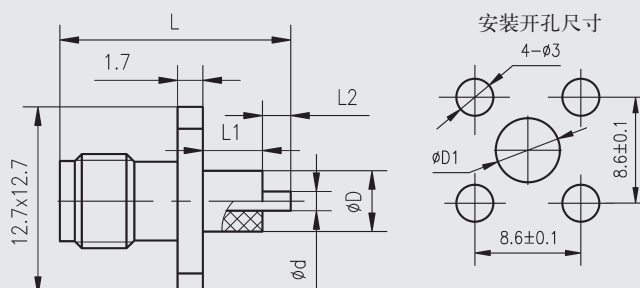
SMA-KFD330S



SMA 系列——微带插座：四孔法兰盘安装 直式非金属凸台



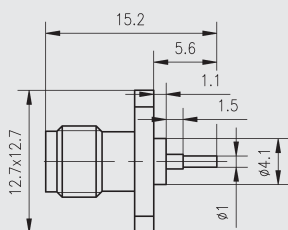
SMA-KFD5 等



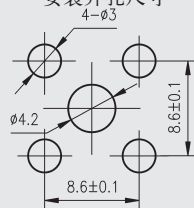
型号	L	L1	L2	d	D	D1
SMA-KFD5	15.6	4.0	2.0	1.3	4.1	4.2
SMA-KFD6	20.6	9.0	2.0	1.3	4.1	4.2
SMA-KFD22	27.5	15.0	3.0	1.3	4.1	4.2
SMA-KFD23	14.1	4.0	0.6	0.4	4.1	4.2
SMA-KFD43	21.5	4.0	8.0	1.3	4.1	4.2
SMA-KFD68B	15.2	3.2	2.5	0.7	2.1	2.2
SMA-KFD83	14.5	2.4	2.4	1.3	4.1	4.2
SMA-KFD85	27.6	13	5.0	1.3	4.1	4.2
SMA-KFD91	24.2	1.6	13.1	1.3	4.1	4.2
SMA-KFD101	27.5	15	3.0	1.3	4.1	4.2
SMA-KFD103	19	7.5	2.0	1.3	4.1	4.2
SMA-KFD177	20.5	8.0	3.0	1.3	4.1	4.2
SMA-KFD178	18.7	5.0	4.2	1.3	4.1	4.2
SMA-KFD197	23.5	12.0	2.0	1.3	4.1	4.2
SMA-KFD201	24	9	5.5	1.3	4.1	4.2
SMA-KFD216	16.5	5.0	2.0	1.3	4.1	4.2
SMA-KFD223	16.9	5.4	2.0	1.3	4.1	4.2
SMA-KFD247	27.5	4.0	14	1.3	4.1	4.2
SMA-KFD285	39.5	25.0	5.0	1.3	4.1	4.2
SMA-KFD298	46.5	25.0	12.0	1.3	4.1	4.2



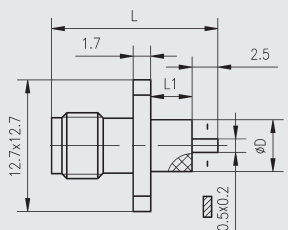
SMA-KFD8



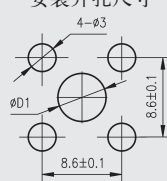
安装开孔尺寸



SMA-KFD13 等



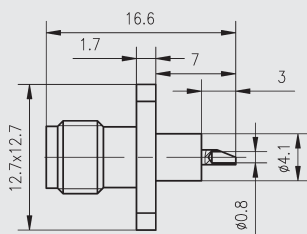
安装开孔尺寸



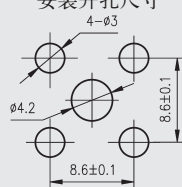
型号	L	L1	D	D1
SMA-KFD13	16	4.0	4.1	4.2
SMA-KFD14	15.3	3.2	4.1	4.2
SMA-KFD45	14.5	2.4	4.1	4.2
SMA-KFD68	15.3	3.2	2.1	2.2
SMA-KFD324	19.1	7	4.1	4.2



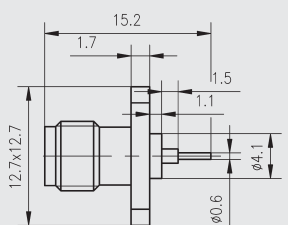
SMA-KFD40



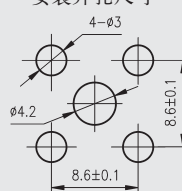
安装开孔尺寸



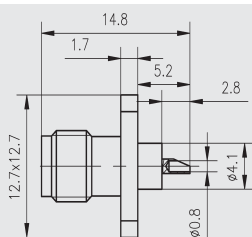
SMA-KFD44



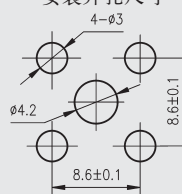
安装开孔尺寸



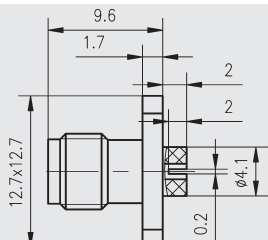
SMA-KFD80



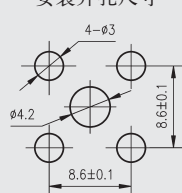
安装开孔尺寸



SMA-KFD140

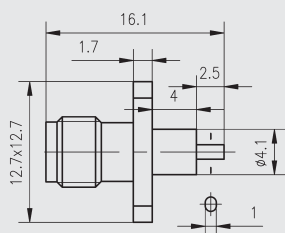


安装开孔尺寸

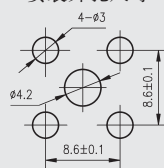




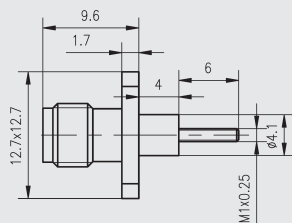
SMA-KFD144



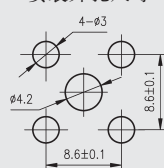
安装开孔尺寸



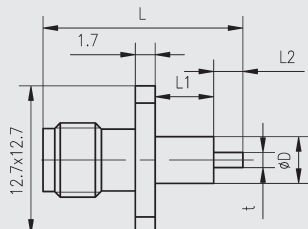
SMA-KFD153



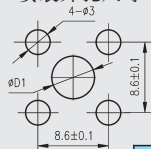
安装开孔尺寸



SMA-KFD182



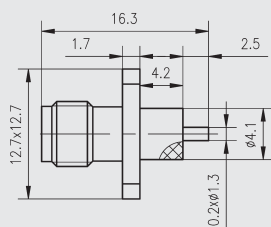
安装开孔尺寸



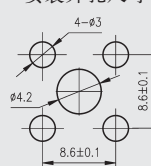
型号	L	L1	L2	t	D	D1
SMA-KFD182	15.2	3.2	2.5	φ 0.7 × 0.5 半圆	2.1	2.2
SMA-KFD200	13.2	1.5	2.5	φ 1.3 × 0.65 半圆	4.1	4.2



SMA-KFD195



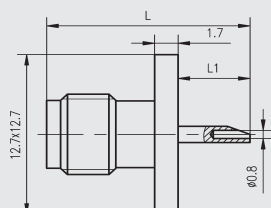
安装开孔尺寸



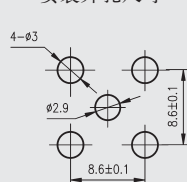
SMA 系列——微带插座：四孔法兰盘安装 直式无凸台



SMA-KFD 等



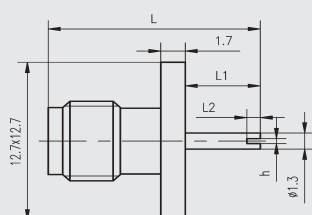
安装开孔尺寸



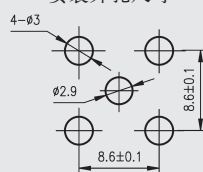
型号	L	L1
SMA-KFD	14.8	5.2
SMA-KFD65	12.6	3.0



SMA-KFD1 等



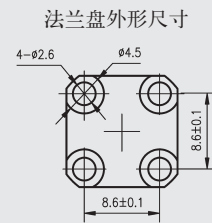
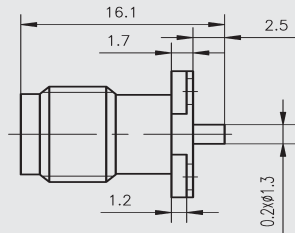
安装开孔尺寸



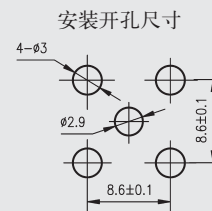
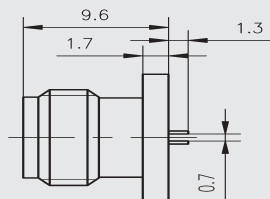
型号	L	L1	L2	h
SMA-KFD1	17.6	8	1.4	0.6
SMA-KFD2	12.0	2.4	1.6	0.6
SMA-KFD18	12.1	2.5	1.6	0.2
SMA-KFD35	10.6	1.0	1.0	0.4
SMA-KFD36	10.6	1.0	1.0	0.2
SMA-KFD148	11.1	1.5	1.0	0.2



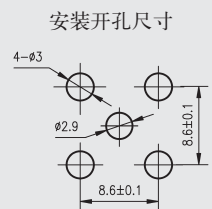
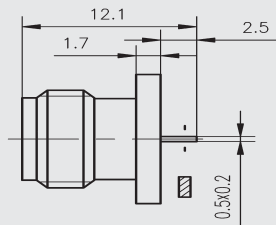
SMA-KFD32



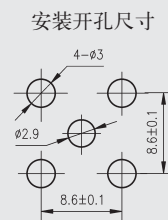
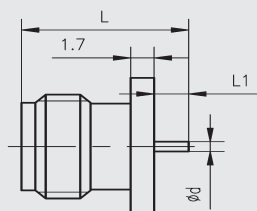
SMA-KFD38



SMA-KFD39



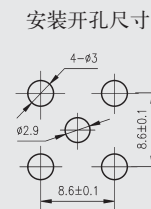
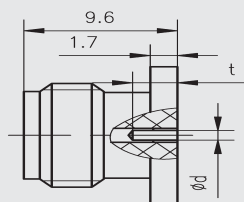
SMA-KFD47等



型 号	L	L1	d
SMA-KFD47	11.2	1.6	0.9
SMA-KFD48	10.8	1.2	0.8
SMA-KFD48A	10.5	0.9	0.6
SMA-KFD78	11.1	1.5	0.7
SMA-KFD88	14.1	1.5	0.5
SMA-KFD152	10.2	0.6	0.6



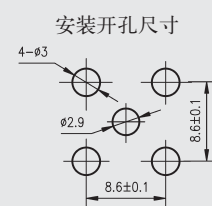
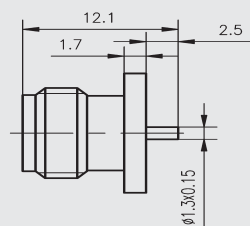
SMA-KFD93等



型 号	t	d	配接插针
SMA-KFD93	2.8	0.9	φ 0.9 ~ φ 0.93
SMA-KFD276	2.8	0.8	φ 0.78 ~ φ 0.8
SMA-KFD280	2.6	0.5	φ 0.45 ~ φ 0.48



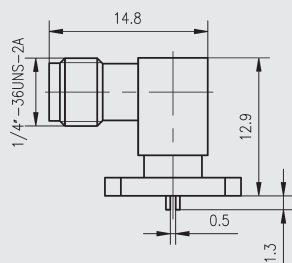
SMA-KFD149



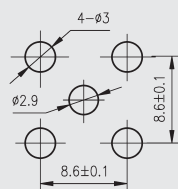
SMA 系列——微带插座：四孔法兰盘安装 直角弯式



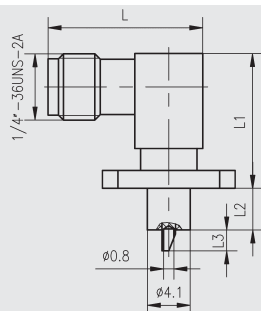
SMA-KWFD



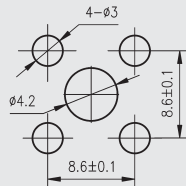
安装开孔尺寸



SMA-KWFD1 等



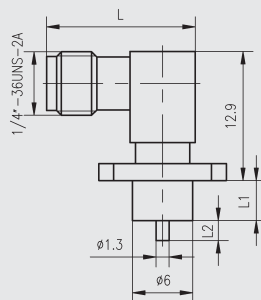
安装开孔尺寸



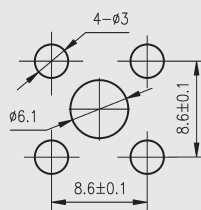
型 号	L	L1	L2	L3
SMA-KWFD1	14.8	12.9	4	2
SMA-KWFD7	14.8	15.9	7	2



SMA-KWFD2 等



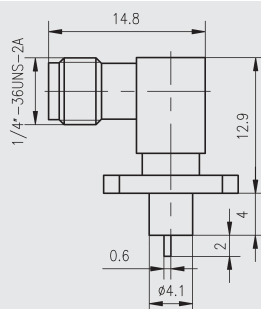
安装开孔尺寸



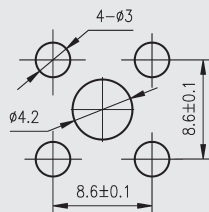
型 号	L	L1	L2
SMA-KWFD2	14.8	4	2
SMA-KWFD11	14.8	2.4	5
SMA-KWFD21	23.3	4	2



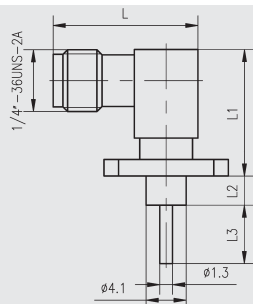
SMA-KWFD3



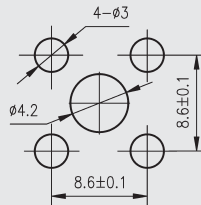
安装开孔尺寸



SMA-KWFD4 等



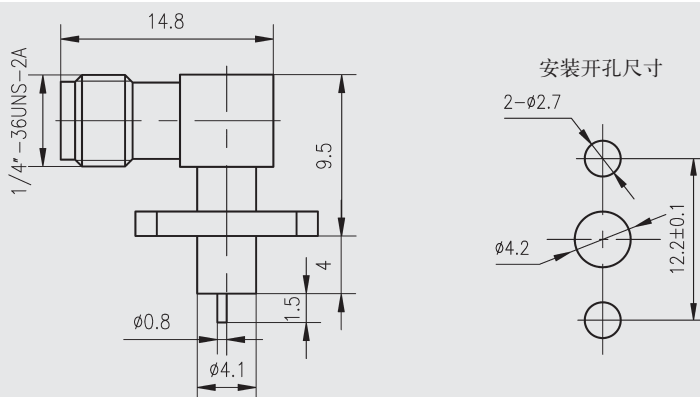
安装开孔尺寸



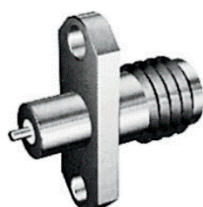
型 号	L	L1	L2	L3
SMA-KWFD4	14.6	11.3	12.7	3.2
SMA-KWFD36	14.8	13	3	6
SMA-KWFD37	14.8	13	4.2	4.8
SMA-KWFD45	14.8	13	10	4



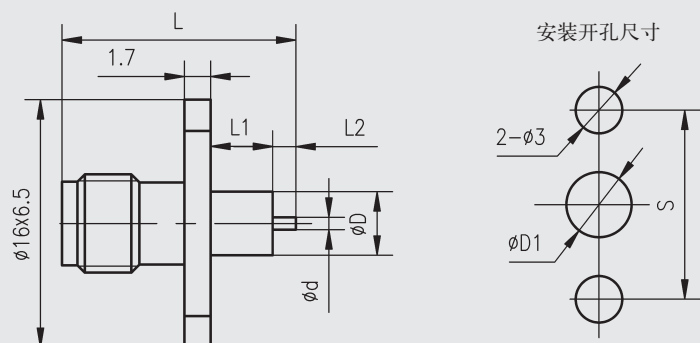
SMA-KWFD29



SMA 系列——微带插座：两孔法兰盘安装 直式金属凸台



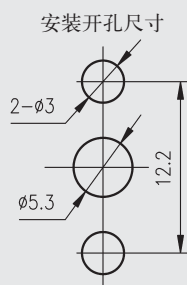
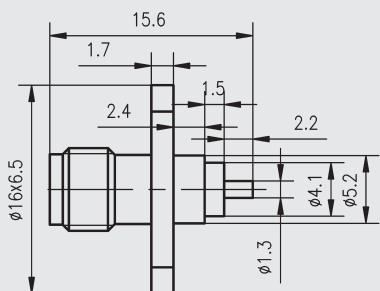
SMA-KFD19A 等



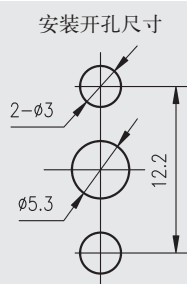
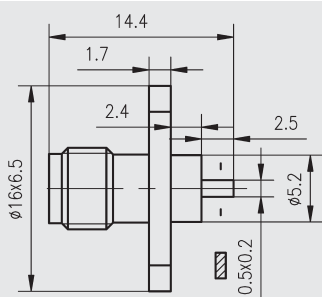
型 号	L	L1	L2	d	D	D1	S
SMA-KFaD-2.5P	14.6	2.5	2.5	1.3	6	6.1	12.2
SMA-KFD19A	15.6	4	2	1.3	6	6.1	12.2
SMA-KFD19AG	15.6	4	2	1.3	6	6.1	12.2
SMA-KFD55	15.6	4	2	$\phi 0.9 \times 0.2$	4	4.2	12.2
SMA-KFD164	15.1	4	1.5	0.8	4.1	4.2	12.2
SMA-KFD165	15.1	4	1.5	0.8	4.1	4.2	10.2
SMA-KFD166	14.4	4	0.8	0.6	4.1	4.2	12.2
SMA-KFD273	17.6	5	3	1	4.5	4.6	10.2
SMA-KFD164G	15.1	4	1.5	0.8	4.1	4.2	12.2
SMA-KFD199	14.4	2.4	2.4	0.5	5.2	5.3	12.2
SMA-KFD221	14	2.4	2	0.5	5.2	5.3	12.2
SMA-KFD237	15.6	4	2	0.8	4.1	4.2	12.2
SMA-KFD258G	16.9	4	3.3	1.3	6	6.1	12.2



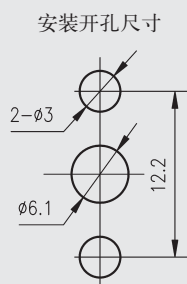
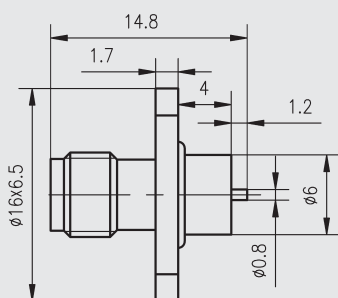
SMA-KFD24



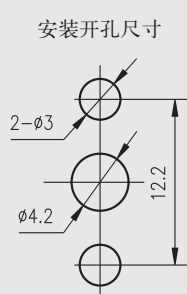
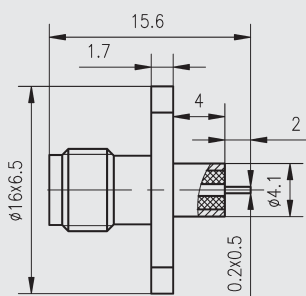
SMA-KFD31



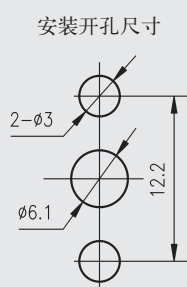
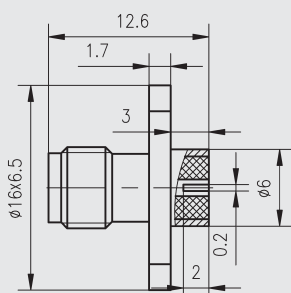
SMA-KFD193



SMA-KFD204



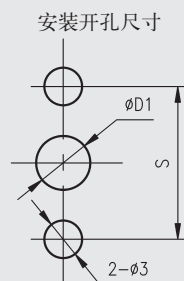
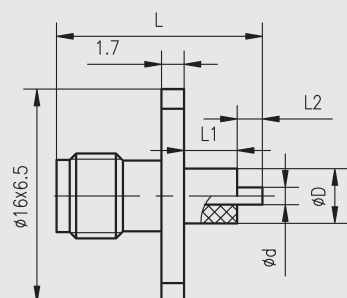
SMA-KFD208



SMA 系列——微带插座：两孔法兰盘安装 直式非金属凸台



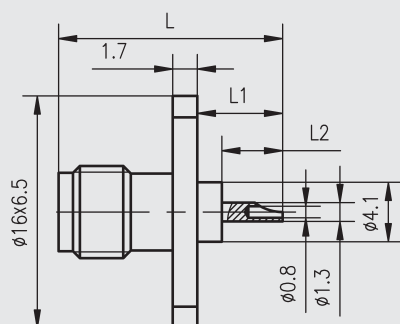
SMA-KFD3 等



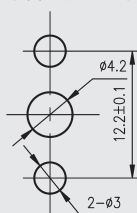
型号	L	L1	L2	d	D	D1	S
SMA-KFD3	27.6	15	3.0	1.3	4.1	4.2	12.2
SMA-KFD5A	15.6	4.0	2.0	1.3	4.1	4.2	12.2
SMA-KFD5B	14.8	3.2	2.0	1.3	4.1	4.2	12.2
SMA-KFD21	15.6	2.0	4.0	1.3	4.1	4.2	12.2
SMA-KFD46	16.6	4.0	3.0	1.3	4.1	4.2	12.2
SMA-KFD57	17.6	5	3	0.8	4.1	4.2	12.2
SMA-KFD64	27.5	15	2.9	1.3	4.1	4.2	12.2
SMA-KFD77	15.6	2	4	1.3	4.1	4.2	12.2
SMA-KFD84	15.6	3	3	1.3	4.1	4.2	12.2
SMA-KFD84G	15.6	3	3	1.3	4.1	4.2	12.2
SMA-KFD102	17.6	5	3	1.3	4.1	4.2	12.2
SMA-KFD102AG	17.6	5	3	1.3	4.1	4.2	10.2
SMA-KFD108	17.8	1	8	M2	5.2	5.3	12.2
SMA-KFD142	17	3	3	1.3	4.1	4.2	12.2
SMA-KFD143	25.8	12.2	4	1.3	3.0	3.1	12.2
SMA-KFD147G	14.8	3.2	2	1.3	4.1	4.2	12.2
SMA-KFD150	27.6	15	3	1.3	4.1	4.2	12.2
SMA-KFD157	34.5	20	5	1.3	4.1	4.2	12.2
SMA-KFD189	17.6	6	2	1.3	4.1	4.2	12.2
SMA-KFD203	21.6	4	8	1.3	4.1	4.2	12.2
SMA-KFD205	81.1	62	9.5	1.3	4.1	4.2	12.2
SMA-KFD263	17.6	4	4	0.8	5	5.1	12.2
SMA-KFD265	20.6	7	4	1.3	3	3.1	12.2
SMA-KFD266	40.8	20.6	10	1.0	4.1	4.2	12.2
SMA-KFD267	27.7	10.5	7	0.8	2.6	2.7	12.2
SMA-KFD274	14	2	2.5	1.3	4.1	4.2	12.2
SMA-KFD284	15.6	3	3	1.0	4.1	4.2	12.2
SMA-KFD314	19.2	4	5.6	0.7	4.1	4.2	12.2
SMA-KFD315	14.1	3	1.5	1.3	4.1	4.2	12.2



SMA-KFD17 等



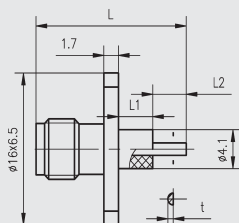
安装开孔尺寸



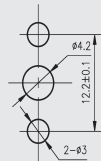
型号	L	L1	L2
SMA-KFD17	14.7	5.1	4.0
SMA-KFD100	16.5	7.0	3.0



SMA-KFD69 等



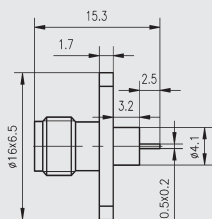
安装开孔尺寸



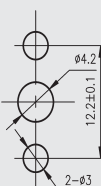
型 号	L	L1	L2	t
SMA-KFD69	15.1	2.5	3	0.62
SMA-KFD73	15.2	4	1.6	0.55



SMA-KFD98



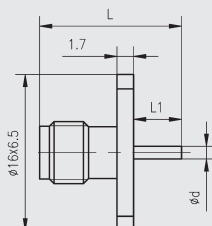
安装开孔尺寸



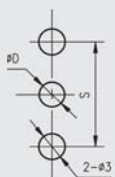
SMA 系列——微带插座：两孔法兰盘安装 直式无凸台



SMA-KFD20 等



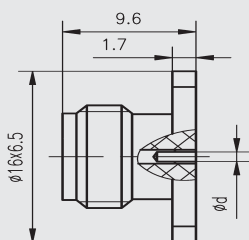
安装开孔尺寸



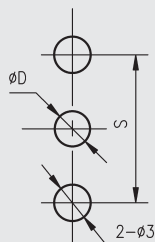
型 号	L	L1	d	D	S
SMA-KFD20	13.6	4	1.3	2.9	12.2
SMA-KFD51	12.1	2.5	1.3	2.9	12.2



SMA-KFD42 等



安装开孔尺寸

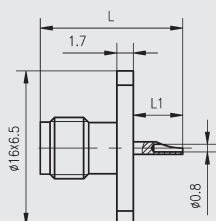


型 号	S	d	D	配接插针
SMA-KFD42	12.2	0.4	2.9	φ 0.35~φ 0.38
SMA-KFD56	8.6	0.4	2.9	φ 0.35~φ 0.38
SMA-KFD71	12.2	0.6	2.9	φ .47~φ 0.5
SMA-KFD72	12.2	0.4	2.9	φ 0.35~φ 0.38
SMA-KFD72G	12.2	0.4	2.9	φ 0.35~φ 0.38
SMA-KFD75	10.2	0.6	2.9	φ 0.47~φ 0.5
SMA-KFD75AG	12.2	0.6	2.9	φ .47~φ 0.5
SMA-KFD92	12.2	0.9	2.9	φ 0.9~φ 0.93
SMA-KFD113	10.2	0.4	2.9	φ 0.35~φ 0.38
SMA-KFD159	12.2	0.5	2.9	φ 0.45~φ 0.48
SMA-KFD191	10.2	0.8	2.9	φ 0.8~φ 0.83
SMA-KFD192	12.2	0.8	2.9	φ 0.8~φ 0.83
SMA-KFD209	10.2	0.4	2.9	φ 0.35~φ 0.38
SMA-KFD331S	12.2	0.5	2.9	φ 0.45~φ 0.48

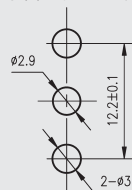
备注：1 SMA-KFD56 法兰盘外形尺寸为 φ 12.8 × 6
2 SMA-KFD209 外壳材料为不锈钢。
3 SMA-KFD159 法兰后端有密封圈，环形槽。



SMA-KFD86等



安装开孔尺寸

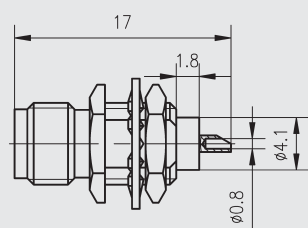


型号	L	L1
SMA-KFD86	14.7	5.1
SMA-KFD184	12.1	2.5

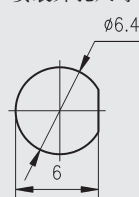
SMA 系列——微带插座：螺母安装 直式



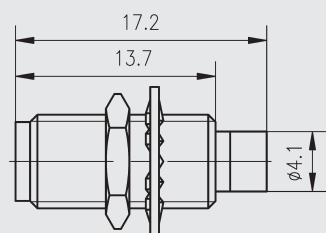
SMA-KYD



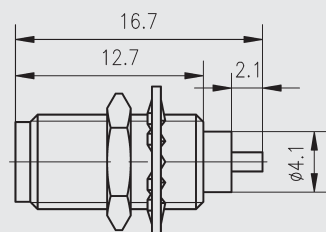
安装开孔尺寸



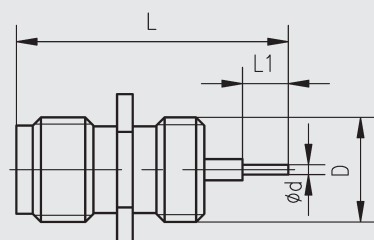
SMA-KYD1



SMA-KYD2



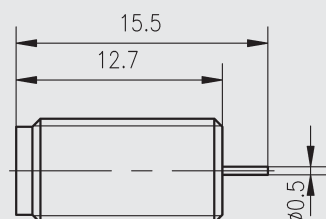
SMA-KYD3等



型号	L	L1	d	D
SMA-KYD3	16.6	2.8	0.6	M7×0.75
SMA-KYD5	19.1	3	0.6	M7×0.75

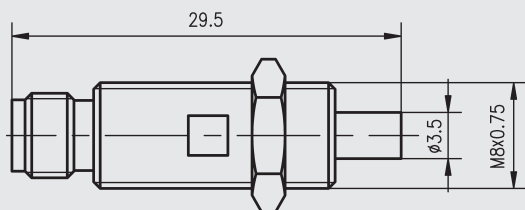


SMA-KYD18

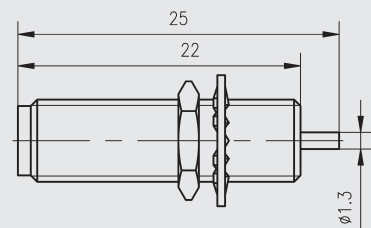




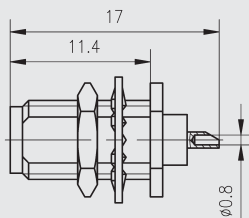
SMA-KYD22



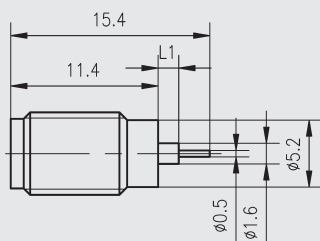
SMA-KYD23



SMA-KYD26



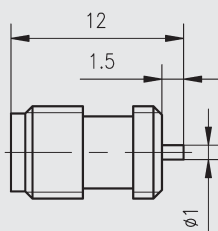
SMA-KYD27G 等



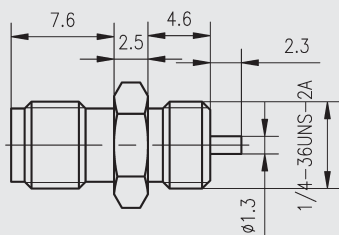
型 号	L1
SMA-KYD27G	1.6
SMA-KYD28G	2.1



SMA-KYD31

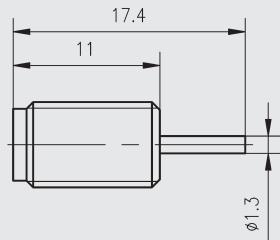


SMA-KYD32

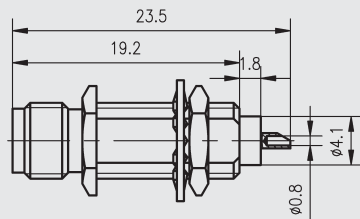




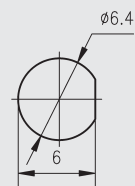
SMA-KYD33



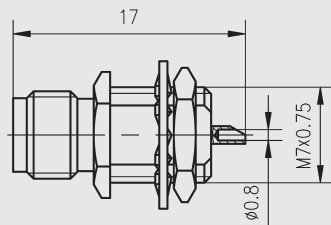
SMA-KYD35



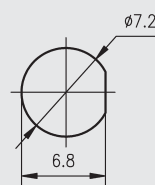
安装开孔尺寸



SMA-KYD36



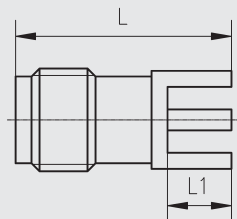
安装开孔尺寸



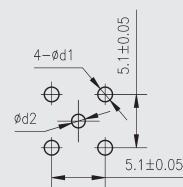
SMA 系列——微带插座：焊接安装 直式



SMA-KHD 等



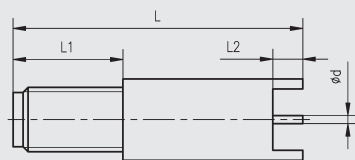
安装开孔尺寸



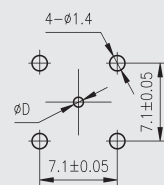
型 号	L	L1	d1	d2
SMA-KHD	13.5	4	1.4	1.3
SMA-KHD14	15.5	3	1.4	1.4
SMA-KHD23	21	4	1.5	1.4



SMA-KHD1 等



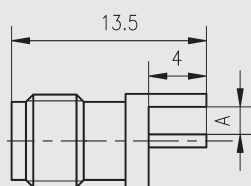
安装开孔尺寸



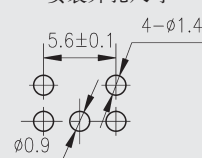
型 号	L	L1	L2	d	D
SMA-KHD1	17.7	10	4.2	1	1.1
SMA-KHD2	34	11	3	0.8	0.9
SMA-KHD3	29	11	3	0.8	0.9



SMA-KHD9 等



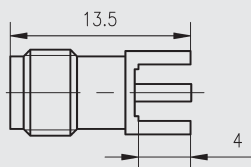
安装开孔尺寸



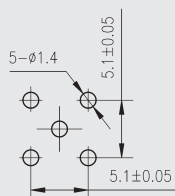
型 号	A
SMA-KHD9	2.0
SMA-KHD9A	1.8
SMA-KHD9B	2.2
SMA-KHD27	1.1



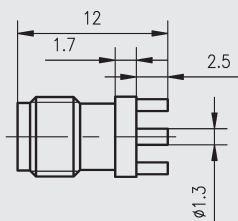
SMA-KHD11



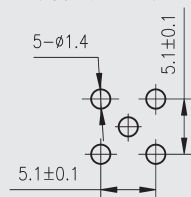
安装开孔尺寸



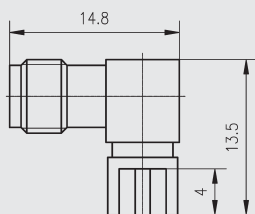
SMA-KHD20



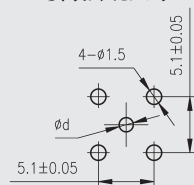
安装开孔尺寸



SMA-KWHD 等



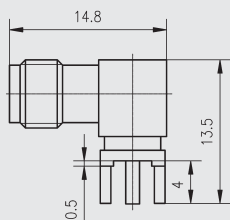
安装开孔尺寸



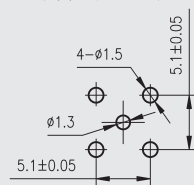
型 号	d
SMA-KWHD	1.3
SMA-75KWHD	2



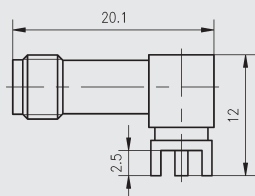
SMA-KWHD-1



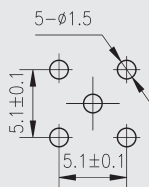
安装开孔尺寸



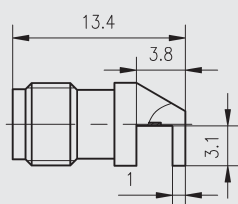
SMA-KWHD4



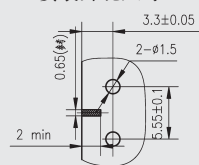
安装开孔尺寸



SMA-KWHD30



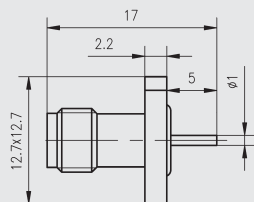
安装开孔尺寸



SMA 系列——微带插座：四孔法兰盘安装 气密封

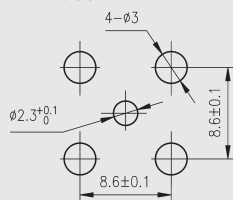


SMA (M) -KFD

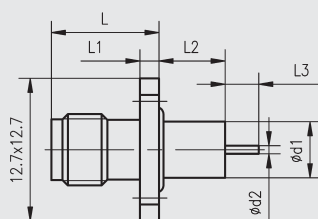


注:漏率不大于 $1.013 \times 10^{-3} \text{Pa} \cdot \text{cm}^3/\text{s}$ 。

安装开孔尺寸

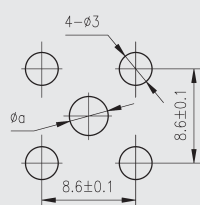


SMA (M) -KFD1等



注:漏率不大于 $1.013 \times 10^{-3} \text{Pa} \cdot \text{cm}^3/\text{s}$ 。

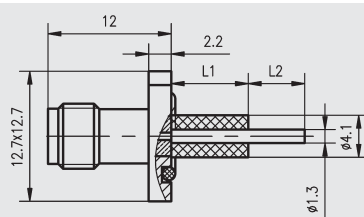
安装开孔尺寸

[illegible]

备注: SMA (M) -KFD16G 外壳材料为不锈钢

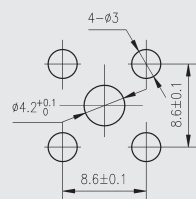


SMA (M) -KFD40等



注:漏率不大于 $1.013 \times 10^{-3} \text{ Pa} \cdot \text{cm}^3/\text{s}$ 。

安装开孔尺寸

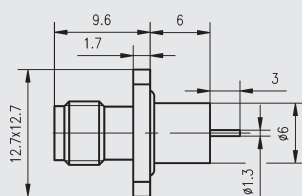


型 号	L1	L2
SMA (M) —KFD40	7.5	5.5
SMA (M) —KFD41	7.5	3.5
SMA (M) —KFD42	11.5	5.5
SMA (M) —KFD44	4	4.5

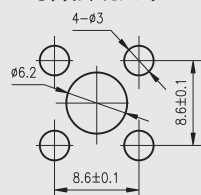
SMA 系列——微带插座：四孔法兰盘安装 水密封



SMA (S) -KFD4

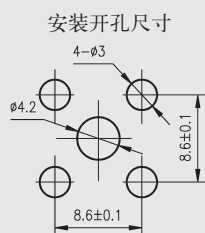
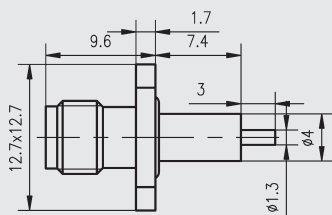


安装开孔尺寸

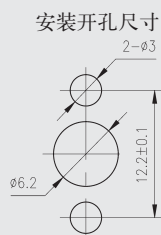
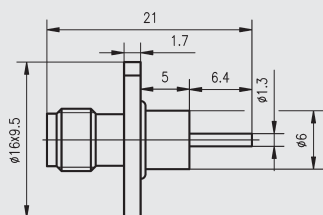




SMA (M) -KFD9



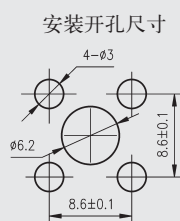
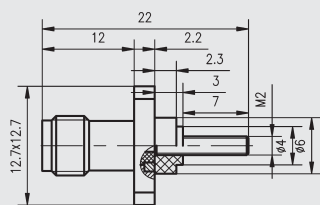
SMA (M) -KFD21



SMA 系列——微带插座 其他特殊形式



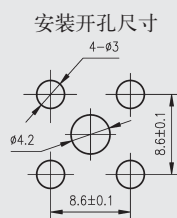
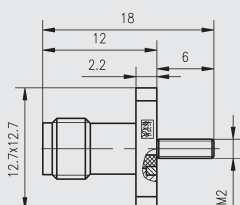
SMA (M) -KFD17



注：非气密封。



SMA (M) -KFD18

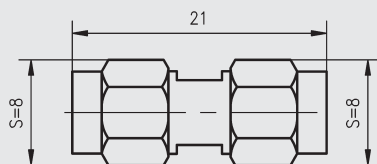


注：非气密封。

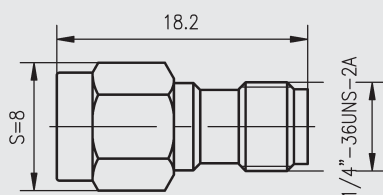
SMA 系列——系列内转接器



SMA-JJ

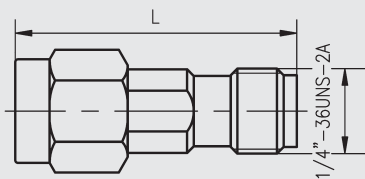


SMA-JK





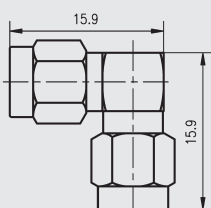
SMA-JK2 等



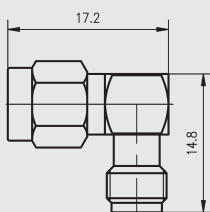
型 号	L
SMA-JK2	21.3
SMA-75JK	18.3



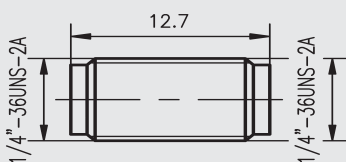
SMA-JWJ



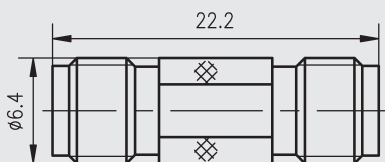
SMA-JWK



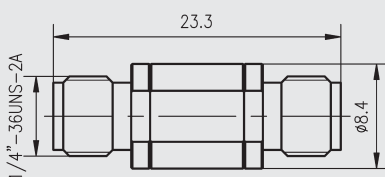
SMA-KK



SMA-KK1

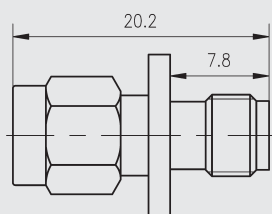


SMA-KK3

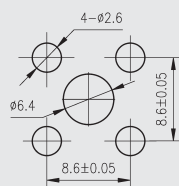




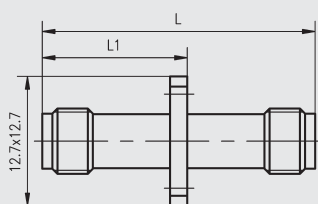
SMA-KFJ



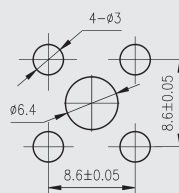
安装开孔尺寸



SMA-KFK 等



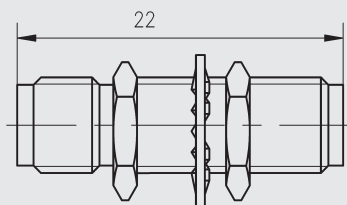
安装开孔尺寸



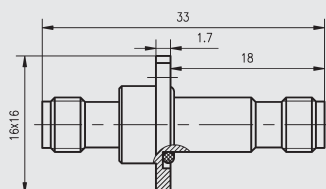
型 号	L	L1
SMA-KFK	27	14.4
SMA-KFK-1	19.5	10.6
SMA-KFK-2	16	8.9
SMA-KFK-3	21	14.3



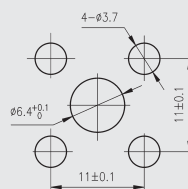
SMA-KYK



SMA (M) -KFK



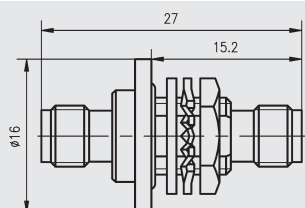
安装开孔尺寸



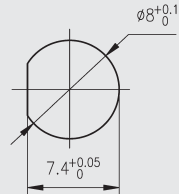
注：气密封转接器，漏率不大于 $1.013 \times 10^{-3} \text{Pa} \cdot \text{cm}^3/\text{s}$ 。



SMA(M)-KYK2



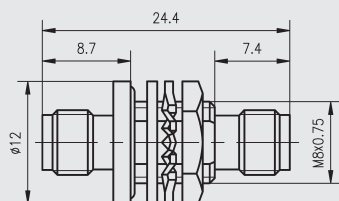
安装开孔尺寸



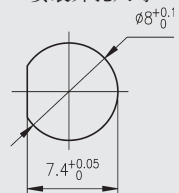
注：气密封转接器，漏率不大于 $1.013 \times 10^{-3} \text{Pa} \cdot \text{cm}^3/\text{s}$ 。



SMA(M)-KYK11



安装开孔尺寸



注：气密封转接器，漏率不大于 $1.013 \times 10^{-3} \text{Pa} \cdot \text{cm}^3/\text{s}$ 。