

SMB 系列射频同轴连接器

概述

SMB 系列产品是按 MIL-C-39012 研制生产的一种小型直插式射频同轴连接器。它具有体积小、重量轻，使用方便，电性能优良等特点，适用于无线电设备和电子仪器的高频回路中连接射频同轴电缆。

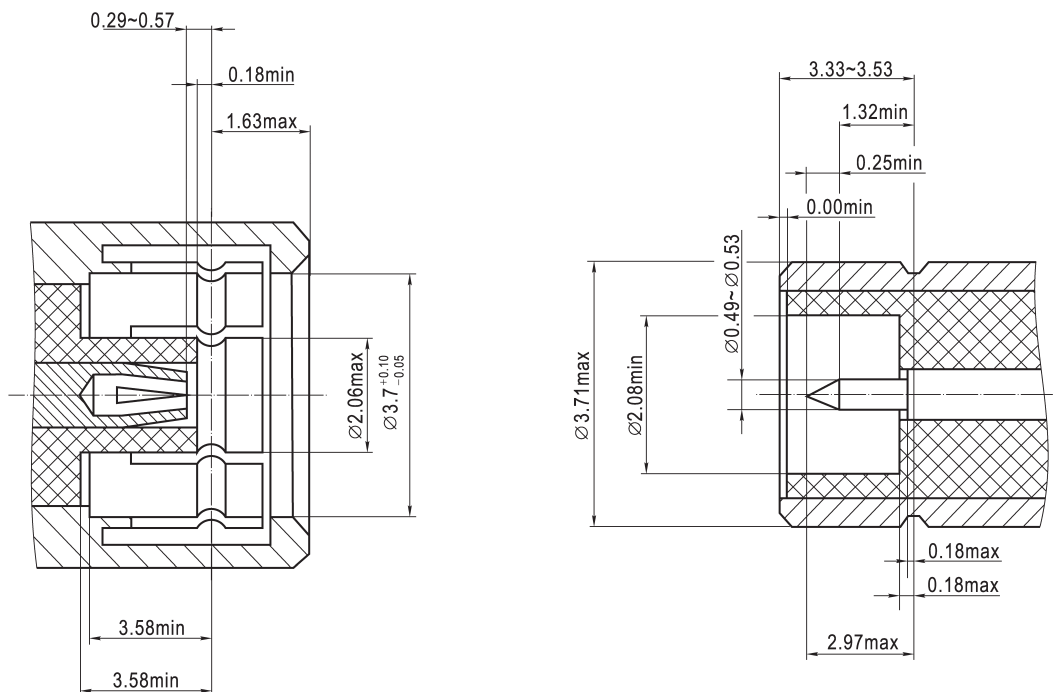
执行标准

质量等级	规范代号	适用产品类型
企军标	Q/Jc20190-2009	SMB 接电缆及接微带连接器
企军标	Q/Jc20608-2018	转接器
七专	Q/Jc20454-2014	接电缆连接器
七专	Q/Jc20455-2014	接微带连接器
七专	Q/Jc20456-2014	转接器

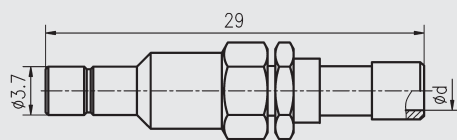
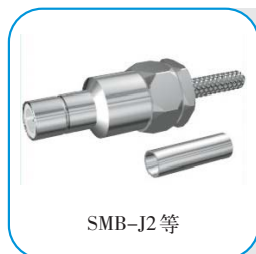
主要技术特性

温度范围	-65~+165℃	电压驻波比	≤1.34
特性阻抗	50Ω、75Ω	绝缘电阻	≥1000MΩ
频率范围	0~4GHz	接触电阻	内导体≤6mΩ
介质耐压	750V (海平面)		外导体≤1mΩ
工作电压	250V (海平面)	寿命	500 次插拔

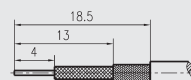
接口配合尺寸



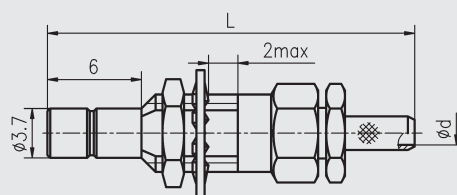
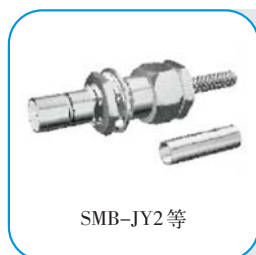
SMB 系列——50Ω电缆连接器



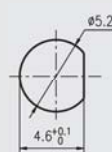
电缆剥线尺寸



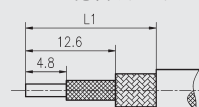
型 号	d	适配电缆
SMB-J2	2	SFF-50-1
SMB-J3	3	SFF-50-1.5-1



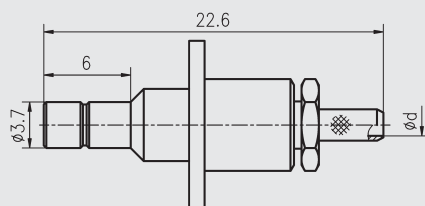
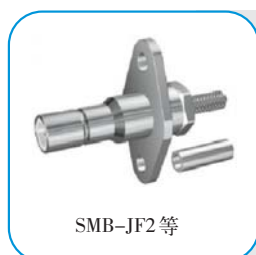
安装开孔尺寸



电缆剥线尺寸



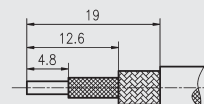
型 号	L	L1	d	适配电缆
SMB-JY2	23.4	18	0.9	SFF-50-1
SMB-JY3	24.4	19	1.6	SFF-50-1.5-1



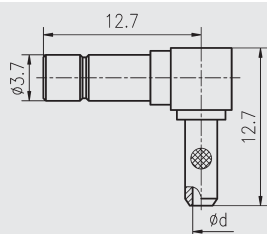
安装开孔尺寸



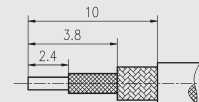
电缆剥线尺寸



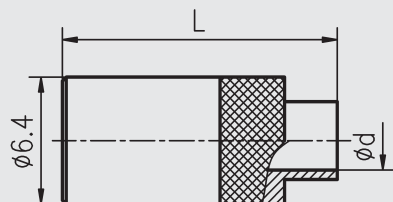
型 号	d	适配电缆
SMB-JF2	0.9	SFF-50-1
SMB-JF3	1.6	SFF-50-1.5-1



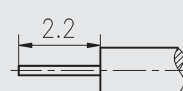
电缆剥线尺寸



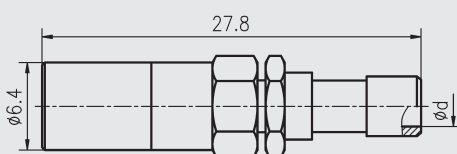
型 号	d	适配电缆
SMB-JW2	0.9	SFF-50-1
SMB-JW3	1.6	SFF-50-1.5-1



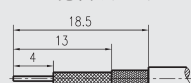
电缆剥线尺寸



型 号	L	d	适配电缆
SMB-KB2	12	2.2	SFT-50-2-1
SMB-KB3	13.7	3.6	SFT-50-3-1



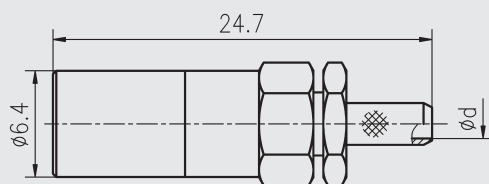
电缆剥线尺寸



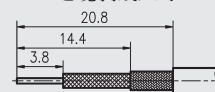
型 号	d	适配电缆
SMB-K2	2	SFF-50-1
SMB-K3	3	SFF-50-1.5-1



SMB-K2A 等



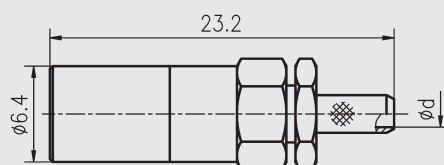
电缆剥线尺寸



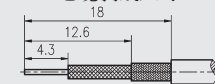
型号	d	适配电缆
SMB-K2A	0.9	SFF-50-1
SMB-K3A	1.6	SFF-50-1.5-1



SMB-K2B 等



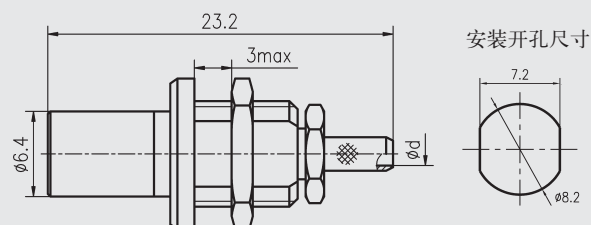
电缆剥线尺寸



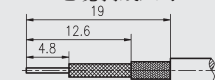
型号	d	适配电缆
SMB-K2B	0.9	SFF-50-1
SMB-K3B	1.6	SFF-50-1.5-1



SMB-KY2 等



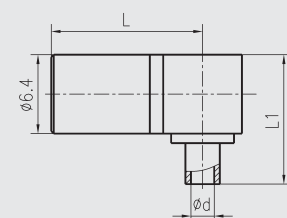
电缆剥线尺寸



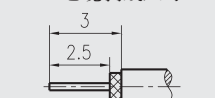
型号	d	适配电缆
SMB-KY2	0.9	SFF-50-1
SMB-KY3	1.6	SFF-50-1.5-1



SMB-KWB1 等



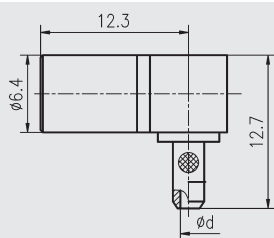
电缆剥线尺寸



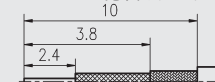
型号	L	L1	d	适配电缆
SMB-KWB1	12.3	10.5	1.2	SFT-50-1
SMB-KWB2	12.1	11.3	2.2	SFT-50-2-1
SMB-KWB3	12.3	10.5	3.6	SFT-50-3-1



SMB-KW2 等



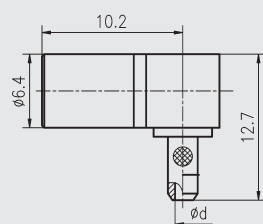
电缆剥线尺寸



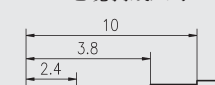
型号	d	适配电缆
SMB-KW2	0.9	SFF-50-1
SMB-KW3	1.6	SFF-50-1.5-1



SMB-KW2A 等



电缆剥线尺寸

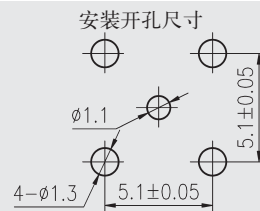
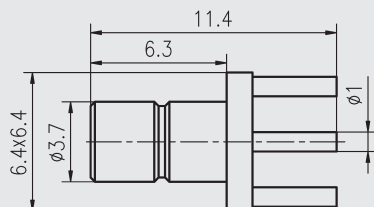


型号	d	适配电缆
SMB-KW2A	0.9	SFF-50-1
SMB-KW3A	1.6	SFF-50-1.5-1

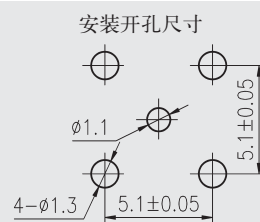
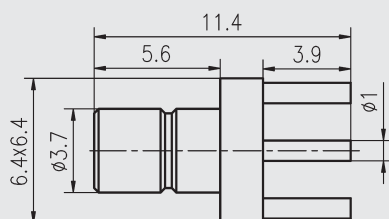
SMB 系列——50Ω印制板连接器



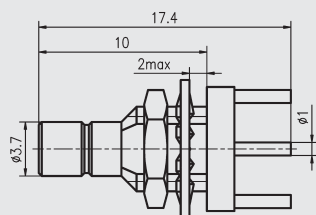
SMB-JHD



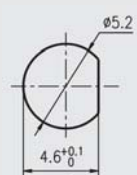
SMB-JHDA



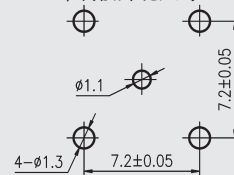
SMB-JHD1



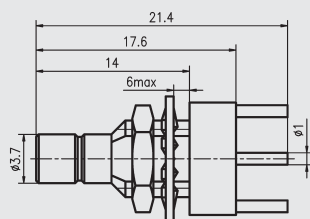
安装开孔尺寸



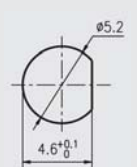
印制板开孔尺寸



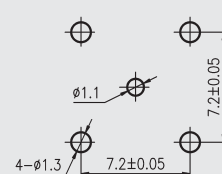
SMB-JHD2



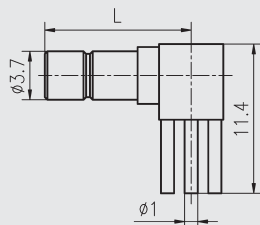
安装开孔尺寸



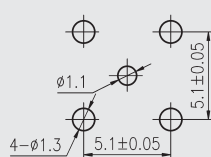
印制板开孔尺寸



SMB-JWHD 等



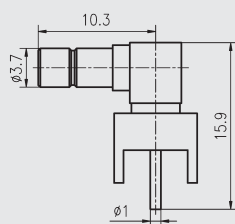
安装开孔尺寸



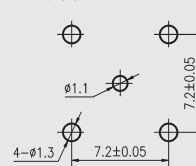
型 号	d
SMB-JWHD	12.3
SMB-JWHD1	10.3



SMB-JWHD2

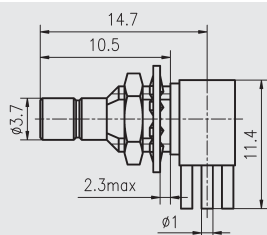


安装开孔尺寸

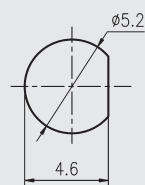




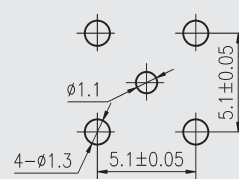
SMB-JWHY



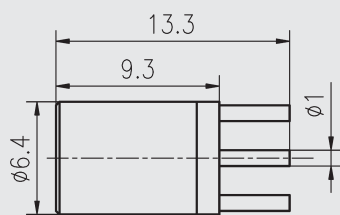
安装板开孔尺寸



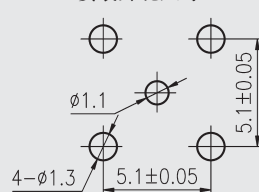
印制板开孔尺寸



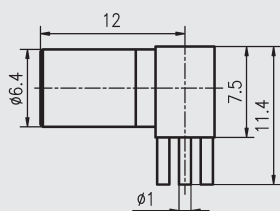
SMB-KHD



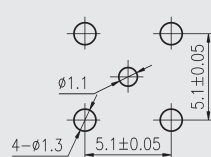
安装开孔尺寸



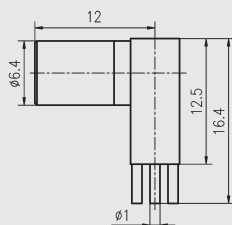
SMB-KWHD



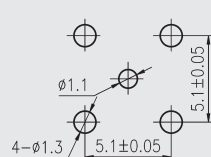
安装开孔尺寸



SMB-KWHD3



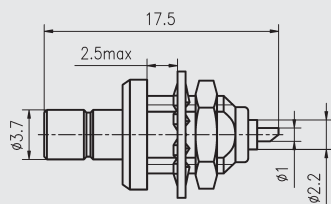
安装开孔尺寸



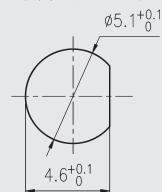
SMB 系列——50Ω穿墙式安装连接器



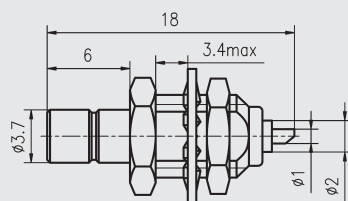
SMB-JY



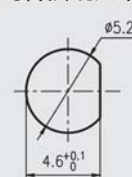
安装开孔尺寸



SMB-JY-4

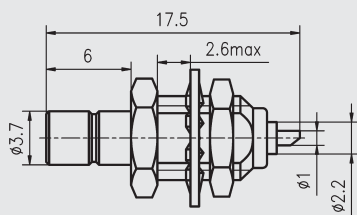


安装开孔尺寸

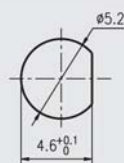




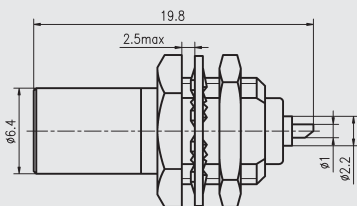
SMB-JYa



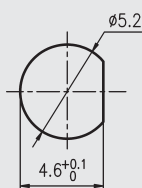
安装开孔尺寸



SMB-KY



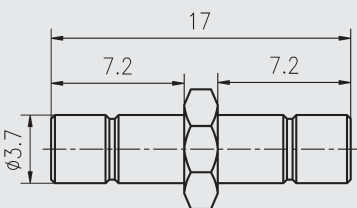
安装开孔尺寸



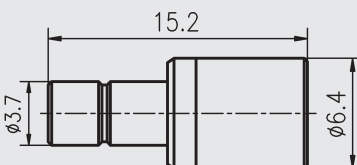
SMB 系列——50Ω系列内转接器



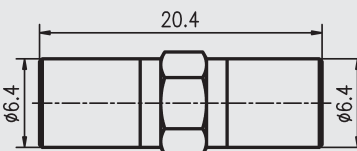
SMB-JJ



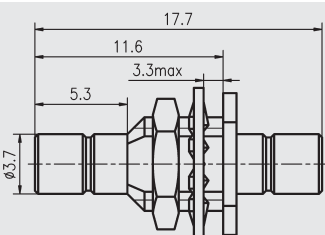
SMB-JK



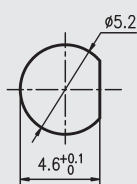
SMB-KK



SMB-JJY1



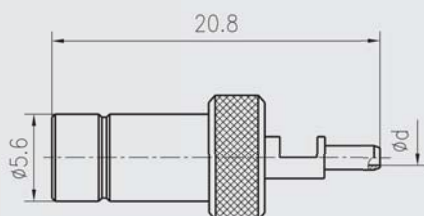
安装开孔尺寸



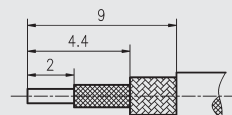
SMB 系列——75Ω连接器



SMB-75J2.5A 等



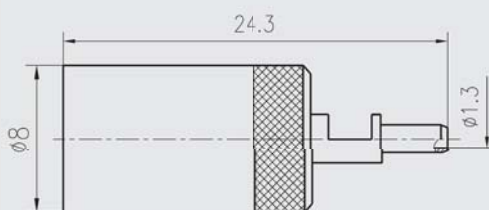
电缆剥线尺寸



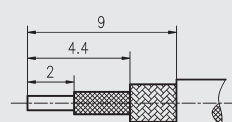
型 号	d	适配电缆
SMB-75J2.5A	1.3	SFYZ-75-2
SMB-75J3A	1.6	SFYZ-75-2-1
SMB-75J4	2.2	SFF-75-2



SMB-75K2.5A



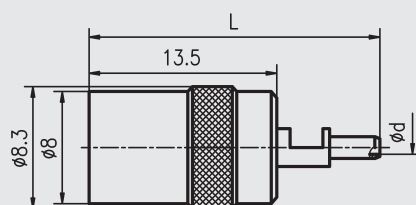
电缆剥线尺寸



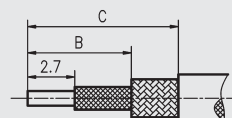
型 号	适配电缆
SMB-75K2.5A	SFYZ-75-2



SMB-75K2.5E 等



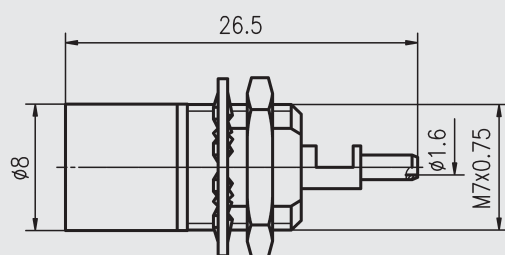
电缆剥线尺寸



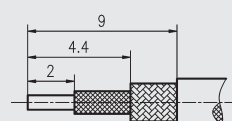
型 号	L	B	C	d	适配电缆
SMB-75K2.5-E	24.3	4.8	9.3	1.6	SFYZ-75-2-1
SMB-75K4-2	26	6	10.5	2.2	SFF-75-2



SMB-75KY3-1



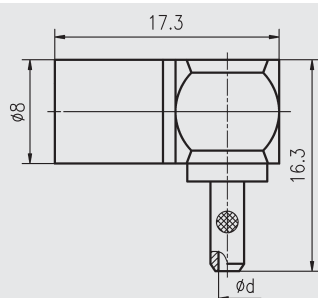
电缆剥线尺寸



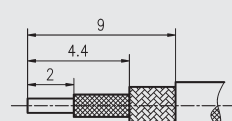
型 号	适配电缆
SMB-75KY3-1	SFF-75-1.5-1



SMB-75KW3A 等



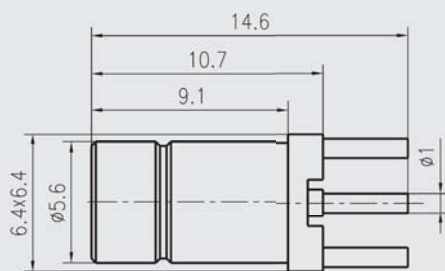
电缆剥线尺寸



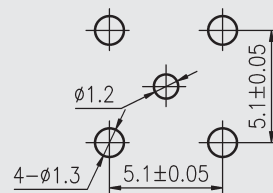
型 号	d	适配电缆
SMB-75KW3A	1.6	SFF-75-1.5-1
SMB-75KW4A	2.2	SFF-75-2



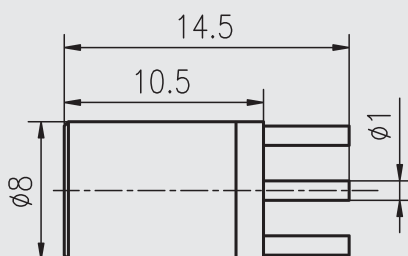
SMB-75JHD



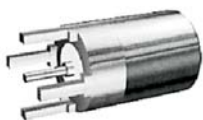
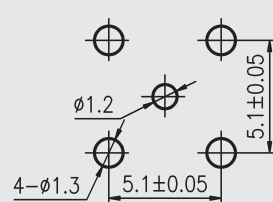
安装开孔尺寸



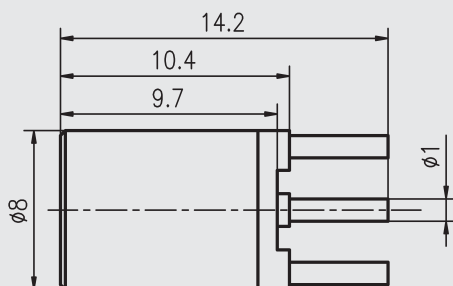
SMB-75KHD



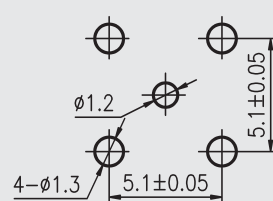
安装开孔尺寸



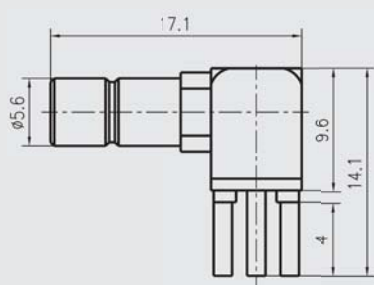
SMB-75KHD2



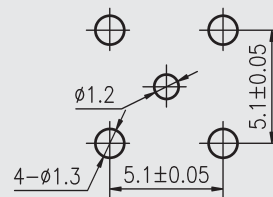
安装开孔尺寸



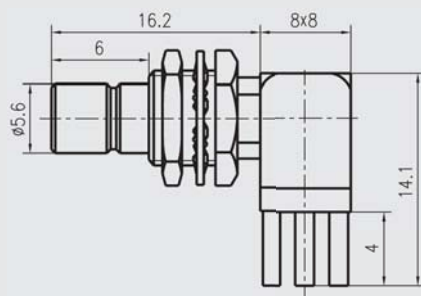
SMB-75JWHD



安装开孔尺寸



SMB-75JYWHD



安装开孔尺寸

