

BMA 系列射频同轴连接器

概述

BMA 系列射频同轴连接器是 SMA 系列的推入式变形，使用频率达到 18GHz，其优点是：体积小、接触可靠、机械和电气性能优越、对接方便等。

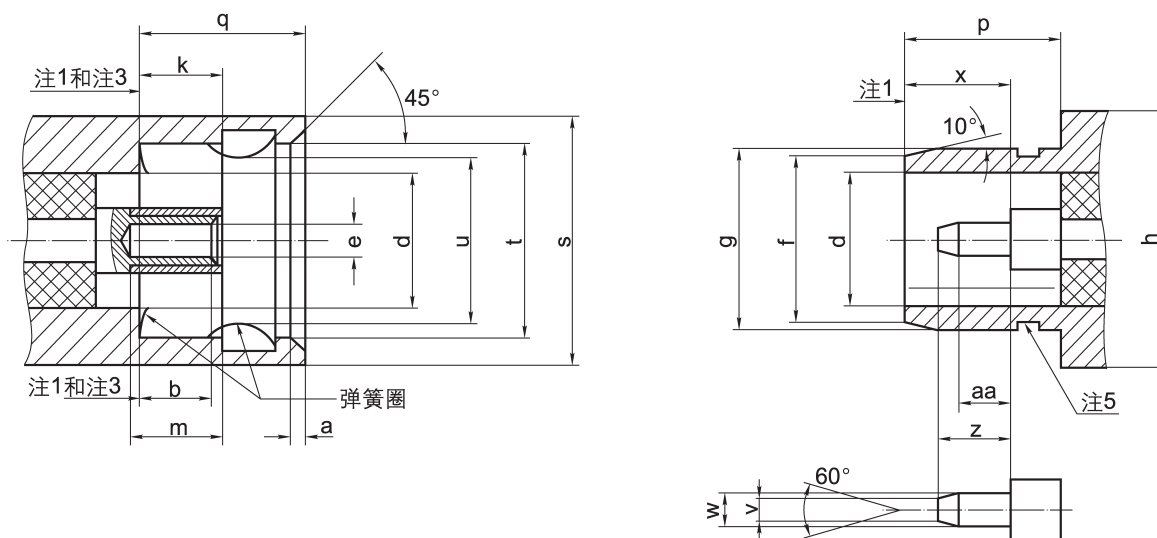
主要技术特性

| | | | |
|------|--------------|-------|-------------|
| 温度范围 | -65℃ ~ +125℃ | 绝缘电阻 | ≥5000MΩ |
| 特性阻抗 | 50Ω | 介质耐压 | 1000V (海平面) |
| 频率范围 | 0~18GHz | 电压驻波比 | ≤1.2+0.012f |
| 接触电阻 | 内导体 ≤6mΩ | 寿命 | 500 次插拔 |
| | 外导体 ≤2mΩ | | |

执行标准

| 质量等级 | 规范代号 | 适用产品类型 |
|------|----------------|----------------|
| 企军标 | Q/Jc20204-2010 | BMA 接电缆及接微带连接器 |
| 企军标 | Q/Jc20608-2018 | 转接器 |
| 七专 | Q/Jc20454-2014 | 接电缆连接器 |
| 七专 | Q/Jc20455-2014 | 接微带连接器 |
| 七专 | Q/Jc20456-2014 | 转接器 |

接口配合尺寸



| 尺寸 | 最小值 (mm) | 最大值 (mm) | 注 | 尺寸 | 最小值 (mm) | 最大值 (mm) | 注 |
|----|---------------|----------|-------|----|----------|----------|-------|
| a | 0.38 | 0.51 | 倒角 | q | — | 5.029 | |
| b | 2.845 | — | 4,6 | s | φ 7.370 | — | |
| d | φ 4.090 (标称值) | | 直径 | t | φ 5.720 | — | 直径 |
| e | — | — | 2, 直径 | u | — | — | 直径 |
| f | φ 4.880 (标称值) | | 直径 | v | — | 0.380 | 4, 直径 |
| g | 5.309 | 5.359 | 直径 | w | 0.9017 | 0.9398 | 直径 |
| h | φ 7.620 (标称值) | | 直径 | x | 3.252 | 3.429 | 直径 |
| k | 3.048 | 3.225 | 3 | z | 2.159 | 2.413 | |
| m | 2.921 | — | | aa | 1.346 | — | |
| p | 5.055 | — | — | — | — | — | — |

注：1、机械和电气基准面。

2、当孔径和直径为 0.9017/0.9398mm (0.0355/0.0370in) 的插针插合时，满足电气和机械性能要求。

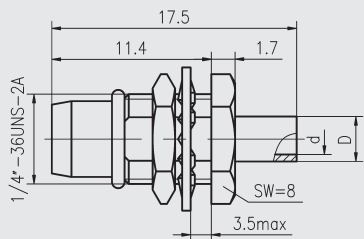
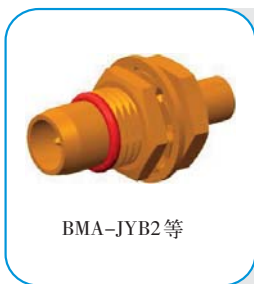
3、到弹簧底部。

4、满足电气和机械性能要求。

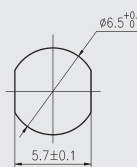
5、密封件的设计及定位任意，但当界面间隙不大于 0.38mm (0.015in) 时，应保证能满足环境性能要求。

6、从基准面到电气和机械接触部位。

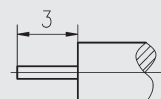
7、型号中尾部带 G 的为不锈钢外壳。



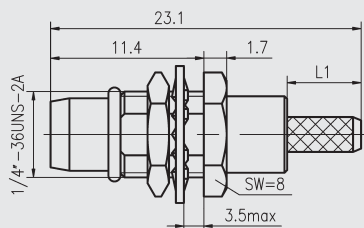
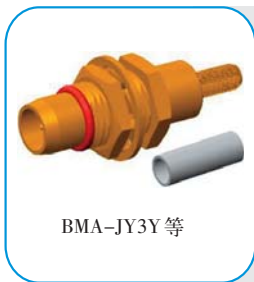
安装开孔尺寸



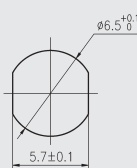
电缆剥线尺寸



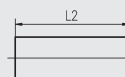
| 型号 | D | d | 配接电缆型号 |
|-----------|------------|------------|------------|
| BMA-JYB2 | $\phi 3.6$ | $\phi 2.2$ | SFT-50-2-1 |
| BMA-JYB3 | $\phi 5$ | $\phi 3.6$ | SFT-50-3-1 |
| BMA-JYB3G | | | |



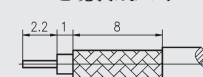
安装开孔尺寸



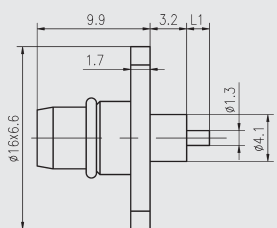
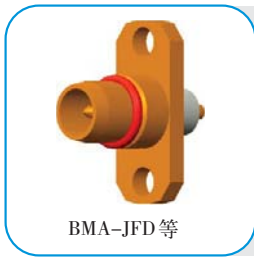
线夹



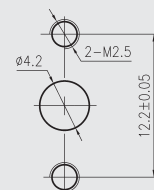
电缆剥线尺寸



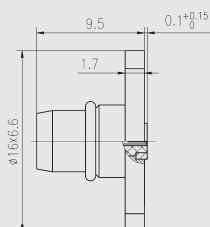
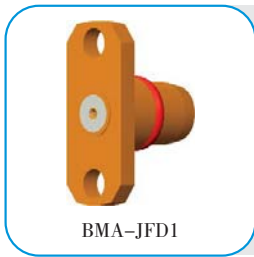
| 型号 | L1 | L2 | 配接电缆型号 |
|----------|-----|----|--------------|
| BMA-JY3Y | 5.5 | 9 | SFF-50-1.5-1 |
| BMA-JY4Y | 8 | 10 | SFF-50-2-2 |
| BMA-JY5Y | 10 | 12 | SFF-50-3-1 |



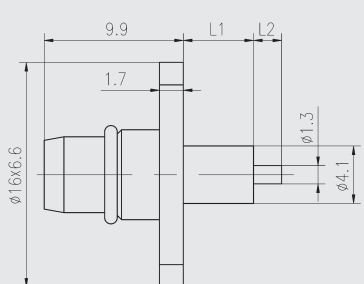
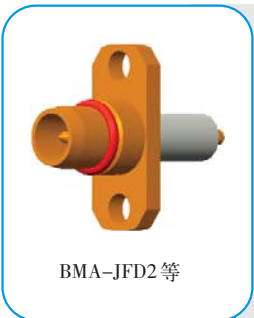
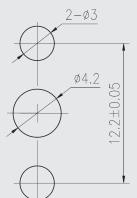
安装开孔尺寸



| 型号 | L1 |
|-----------|-----|
| BMA-JFD | 2 |
| BMA-JFDG | 2 |
| BMA-JFD6G | 2.3 |



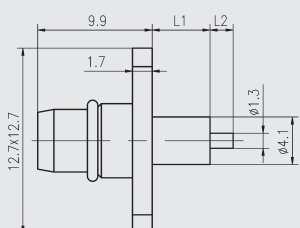
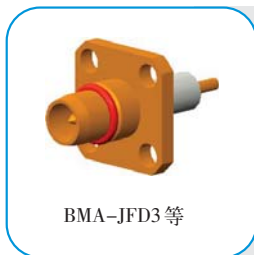
安装开孔尺寸



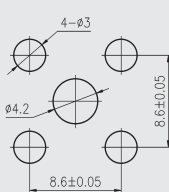
安装开孔尺寸



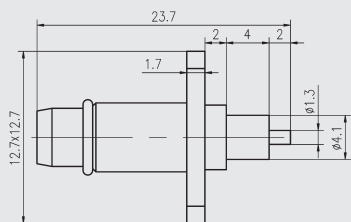
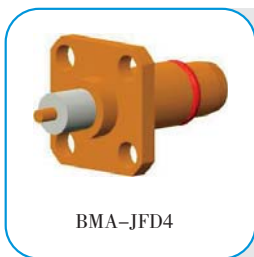
| 型号 | L1 | L2 |
|-----------|-----|-----|
| BMA-JFD2 | 8.4 | 4 |
| BMA-JFD2G | 8.4 | 4 |
| BMA-JFD5G | 8 | 2.3 |
| BMA-JFD6 | 5 | 2 |
| BMA-JFD9 | 8.4 | 2 |
| BMA-JFD9G | 8.4 | 2 |
| BMA-JFD12 | 4 | 3 |
| BMA-JFD13 | 3 | 3 |
| BMA-JFD24 | 14 | 2 |



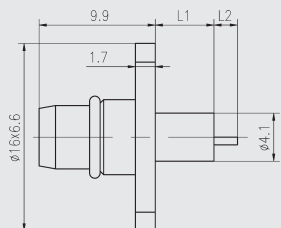
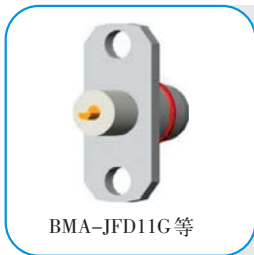
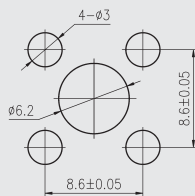
安装开孔尺寸



| 型号 | L1 | L2 |
|-----------|-----|----|
| BMA-JFD3 | 8.4 | 4 |
| BMA-JFD3G | 8.4 | 4 |
| BMA-JFD8 | 4 | 2 |
| BMA-JFD8G | 4 | 2 |
| BMA-JFD10 | 8.4 | 3 |



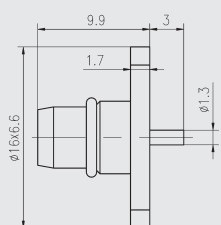
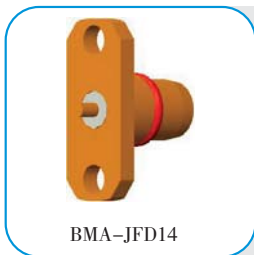
安装开孔尺寸



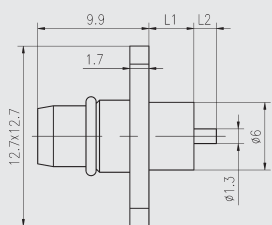
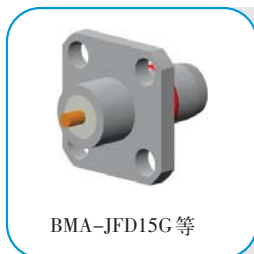
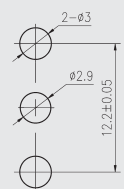
安装开孔尺寸



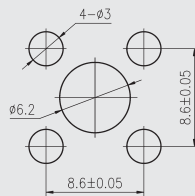
| 型号 | L1 | L2 |
|------------|----|----|
| BMA-JFD11G | 5 | 2 |
| BMA-JFD17 | 3 | 2 |
| BMA-JFD17G | 3 | 2 |



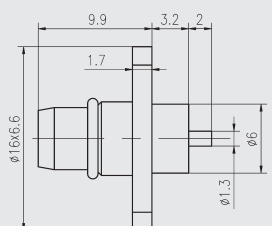
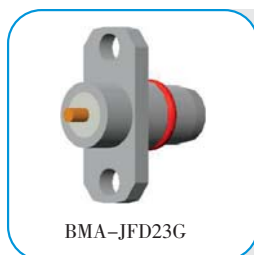
安装开孔尺寸



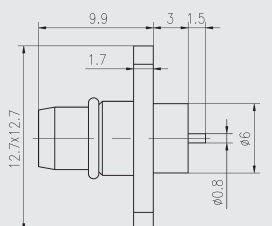
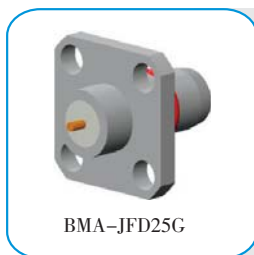
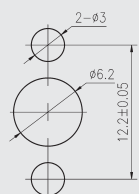
安装开孔尺寸



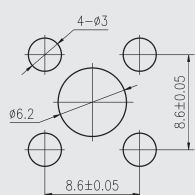
| 型号 | L1 | L2 |
|------------|-----|-----|
| BMA-JFD15G | 4 | 2 |
| BMA-JFD16G | 3.2 | 1.5 |
| BMA-JFD26G | 5 | 5 |

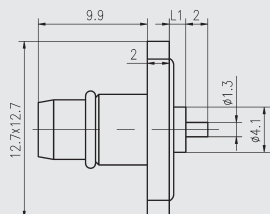
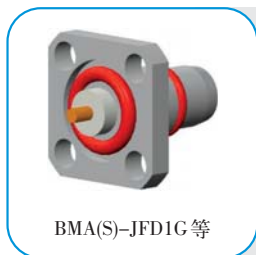


安装开孔尺寸

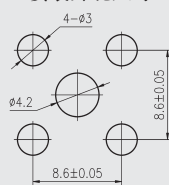


安装开孔尺寸

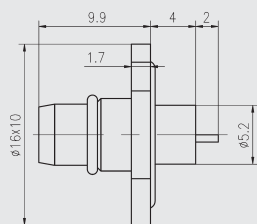
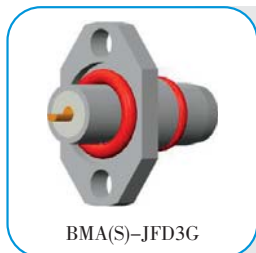




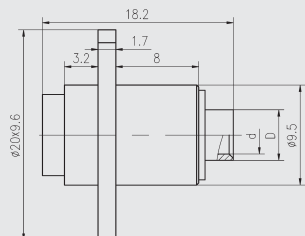
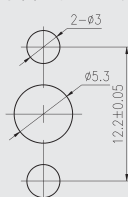
安装开孔尺寸



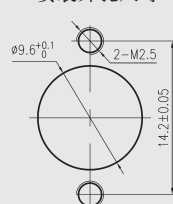
| 型号 | L1 |
|--------------|-----|
| BMA(S)-JFD1G | 1.5 |
| BMA(S)-JFD2G | 8.4 |



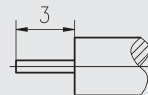
安装开孔尺寸



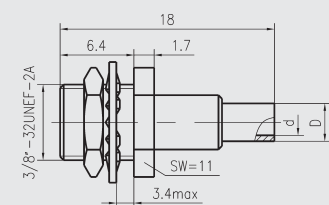
安装开孔尺寸



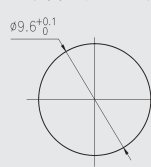
电缆剥线尺寸



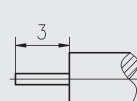
| 型号 | D | d | 配接电缆型号 |
|-----------|-------|-------|------------|
| BMA-KFB2 | φ 3.6 | φ 2.2 | SFT-50-2-1 |
| BMA-KFB3 | φ 5 | φ 3.6 | SFT-50-3-1 |
| BMA-KFB3G | φ 5 | φ 3.6 | SFT-50-3-1 |



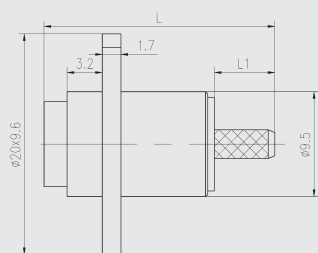
安装开孔尺寸



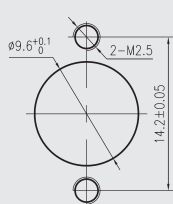
电缆剥线尺寸



| 型号 | D | d | 配接电缆型号 |
|-----------|-------|-------|------------|
| BMA-KYB2G | φ 3.6 | φ 2.2 | SFT-50-2-1 |
| BMA-KYB3G | φ 5 | φ 3.6 | SFT-50-3-1 |

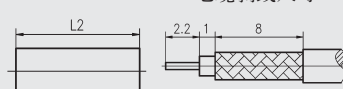


安装开孔尺寸

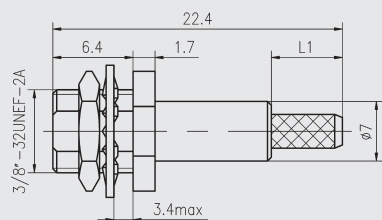


线夹

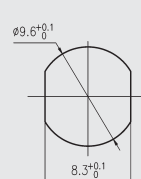
电缆剥线尺寸



| 型号 | L | L1 | L2 | 配接电缆型号 |
|-----------|------|-----|----|--------------|
| BMA-KF3Y | 22.4 | 5.5 | 9 | SFF-50-1.5-1 |
| BMA-KF4Y | 26.4 | 8 | 10 | SFF-50-2-2 |
| BMA-KF5YG | 26.4 | 10 | 12 | SFF-50-3-1 |

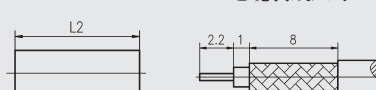


安装开孔尺寸



线夹

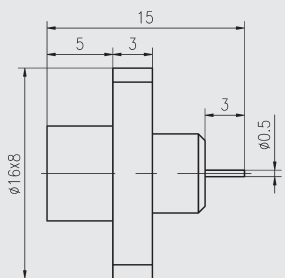
电缆剥线尺寸



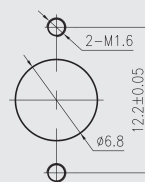
| 型号 | L1 | L2 | 配接电缆型号 |
|----------|-----|----|--------------|
| BMA-KY3Y | 5.5 | 9 | SFF-50-1.5-1 |



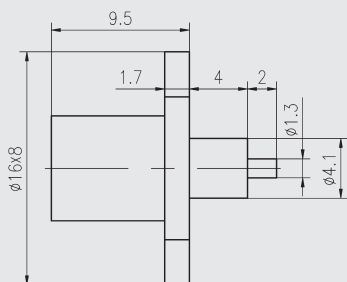
BMA-KFD1



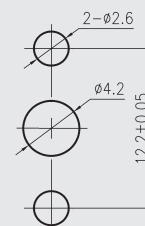
安装开孔尺寸



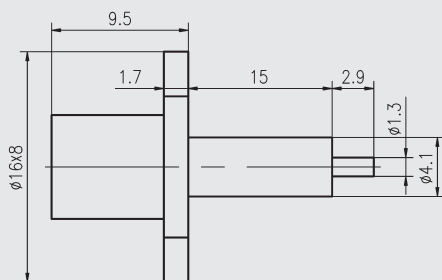
BMA-KFD2



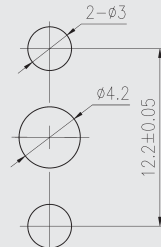
安装开孔尺寸



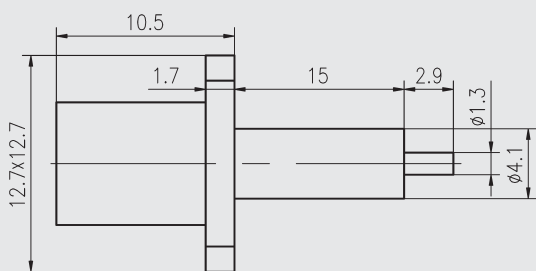
BMA-KFD3



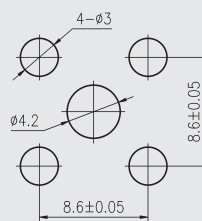
安装开孔尺寸



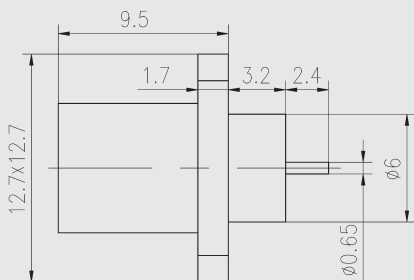
BMA-KFD4G



安装开孔尺寸



BMA-KFD6



安装开孔尺寸

