

## L29 系列射频同轴连接器

### 概述

L29 (7/16) 系列产品是按照 IEC169-4, CECC 22230 和 DIN47223 的相关要求生产的一种较大型螺纹同轴连接器, 具有坚固、稳定、低损耗、工作电压高等特点, 且大部分具有防水结构, 可用于户外作业中、高功率传输的连接器, 广泛用于微波传输和移动通信系统中。

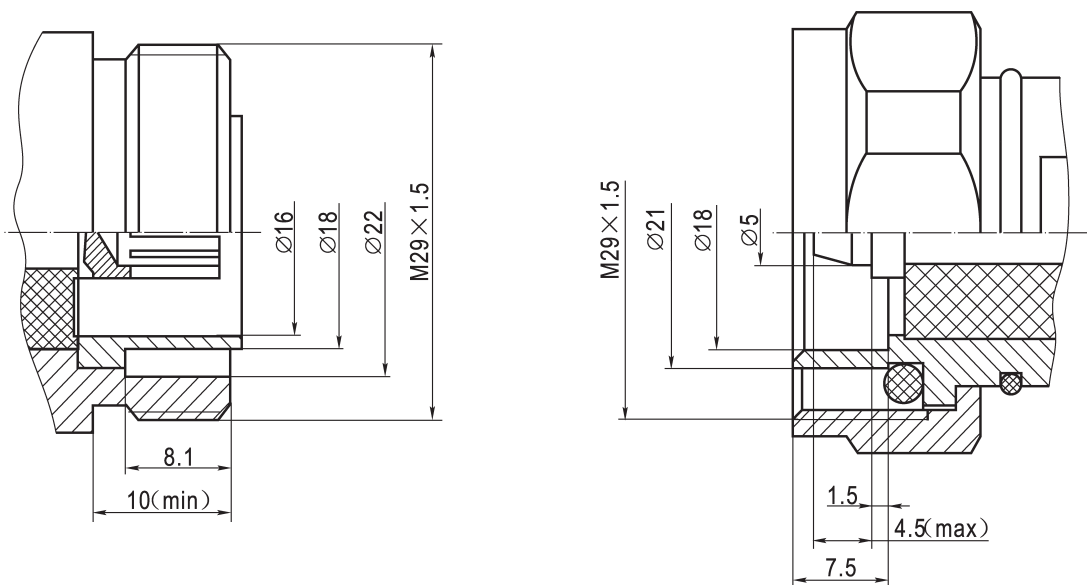
### 执行标准

质量等级	规范代号	适用产品类型
企军标	Q/Jc20223-2010	L29 接电缆及接微带连接器
企军标	Q/Jc20608-2018	转接器
七专	Q/Jc20454-2014	接电缆连接器
七专	Q/Jc20455-2014	接微带连接器
七专	Q/Jc20456-2014	转接器

### 主要技术特性

温度范围	-65~+155℃	绝缘电阻	≥5000MΩ
特性阻抗	50Ω	介质耐压	4000V(海平面)
频率范围	0~7.5GHz	电压驻波比	直式≤1.25
工作电压	2700V(海平面)		弯式≤1.40
接触电阻	内导体≤1mΩ	寿命	500次插拔
	外导体≤0.5mΩ		

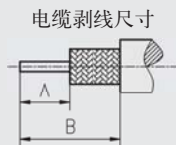
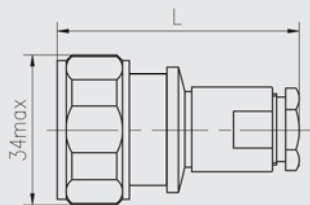
### 接口配合尺寸



L29 系列——电缆插头：自由端



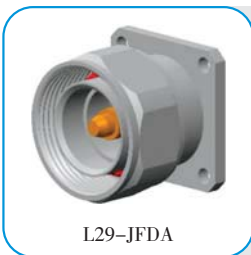
L29-J7 等



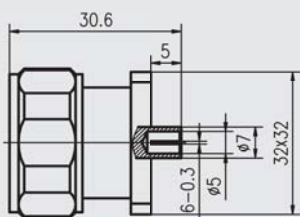
电缆剥线尺寸

型号	L	A	B	配接电缆型号
L29-J7	60.3	4.5	13.5	SYV-50-7-1
L29-J9	62.1	4.5	4.5	SYV-50-9

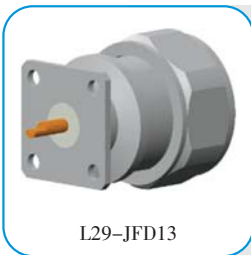
L29 系列——微带插头插座：法兰安装



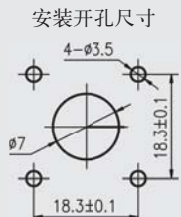
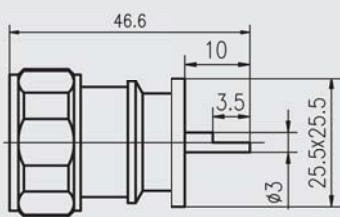
L29-JFDA



安装开孔尺寸



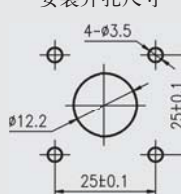
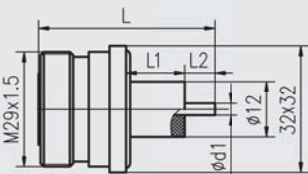
L29-JFD13



安装开孔尺寸



L29-KFD 等

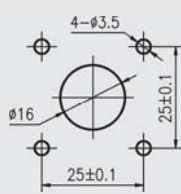
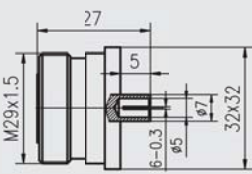


安装开孔尺寸

型号	L	L1	L2	d1
L29-KFD	30	5	3	1.1
L29-KFD-10-8	32	8	2	1.1
L29-KFD-13.5-3	35.5	3	10.5	3
L29-KFD-14-12	36	12	2	1.1



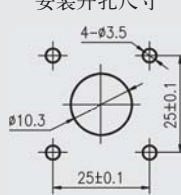
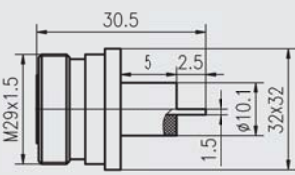
L29-KFDA



安装开孔尺寸



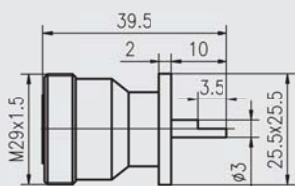
L29-KFD12



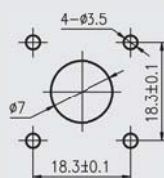
安装开孔尺寸



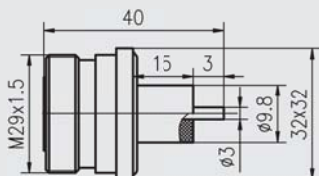
L29-KFD25



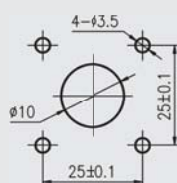
安装开孔尺寸



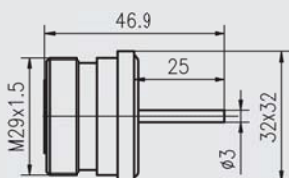
L29(m)-KFD29



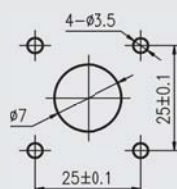
安装开孔尺寸



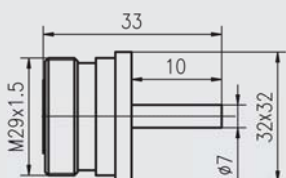
L29(m)-KFD31



安装开孔尺寸



L29-KFD32



安装开孔尺寸

