

MCX 系列射频同轴连接器

概述

MCX 系列射频同轴连接器具有体积小、重量轻、性能优越、可靠性高等优点，广泛应用于对安装体积有特殊要求的领域。

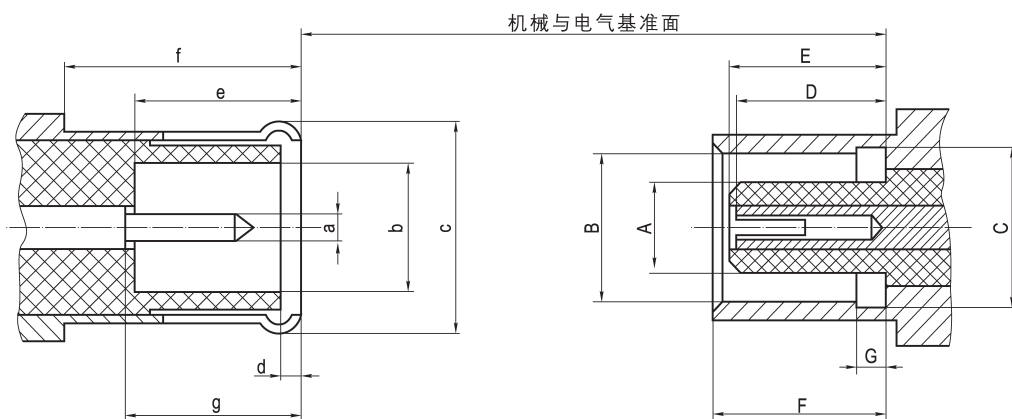
执行标准

质量等级	规范代号	适用产品类型
企军标	Q/Jc20210-2010	MCX 接电缆及接微带连接器
企军标	Q/Jc20608-2018	转接器
七专	Q/Jc20454-2014	接电缆连接器
七专	Q/Jc20455-2014	接微带连接器
七专	Q/Jc20456-2014	转接器
可靠性	LMS070400013-2013	MCX 接微带连接器
可靠性	LMS070400014-2013	MCX 接电缆连接器
可靠性	LMS070400019-2013	转接器

主要技术特性

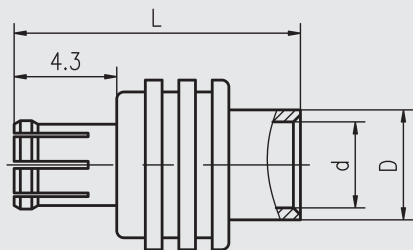
温度范围	-65℃ ~ +155℃	绝缘电阻	≥ 1000MΩ
特性阻抗	50Ω	介质耐压	750V (海平面)
频率范围	0 ~ 6GHz	电压驻波比	≤ 1.3
工作电压	250V (海平面)	插入损耗	0.5dB (1.5GHz 时)
接触电阻	内导体 ≤ 6mΩ	寿命	500 次插拔
	外导体 ≤ 2.5mΩ		

接口配合尺寸

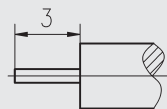


尺寸	插头 (mm)	
	最小值	最大值
a	φ 0.48	φ 0.53
b	φ 2.00	φ 2.07
c	φ 3.66	φ 3.76
d	0.00	0.30
e	2.80	3.20
f	4.15	—
g	2.80	3.20

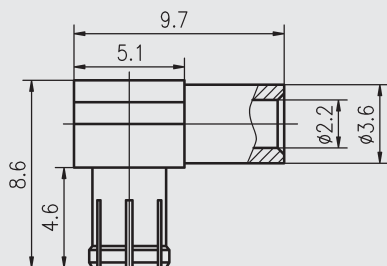
尺寸	插座 (mm)	
	最小值	最大值
A	φ 1.80	φ 1.97
B	φ 3.42	φ 3.48
C	φ 3.60	φ 3.75
D	2.30	2.80
E	2.60	2.80
F	4.00	4.12
G	0.75	0.85



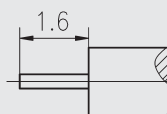
电缆剥线尺寸



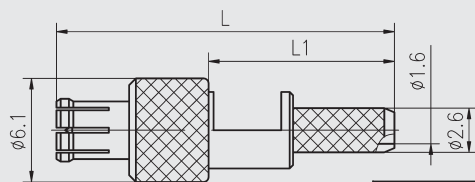
型号	L	D	d	配接电缆型号
MCX-JB2	11.5	φ 3.6	φ 2.2	SFT-50-2-1
MCX-JB3	12	φ 4.6	φ 3.6	SFT-50-3-1



电缆剥线尺寸

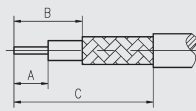
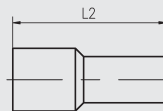


型号	配接电缆型号
MCX-JWB2	SFT-50-2-1

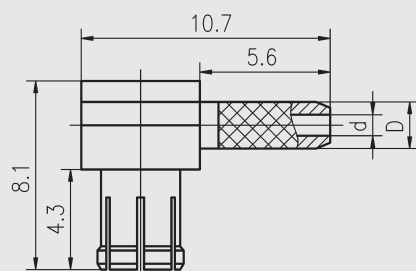


线夹

电缆剥线尺寸

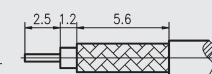
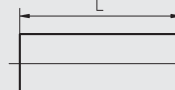


型号	L	L1	L2	A	B	C	配接电缆型号
MCX-J3	20	11	13	2.5	4.5	11.2	SFF-50-1.5-1
MCX-J316	18.4	9.4	16.5	2.2	4	11	RG316DT

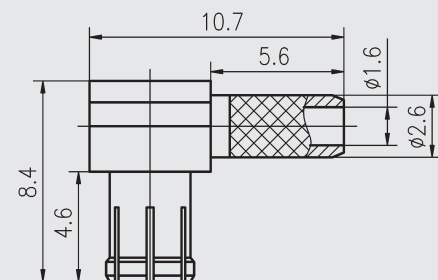


线夹

电缆剥线尺寸

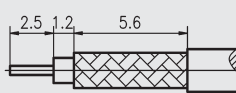
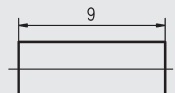


型号	L	D	d	配接电缆型号
MCX-JW2	8.5	φ 2	φ 0.9	SFF-50-1
MCX-JW3	9	φ 2.6	φ 1.6	SFF-50-1.5-1
MCX-JW4	10	φ 3.4	φ 2.3	SFF-50-2-2

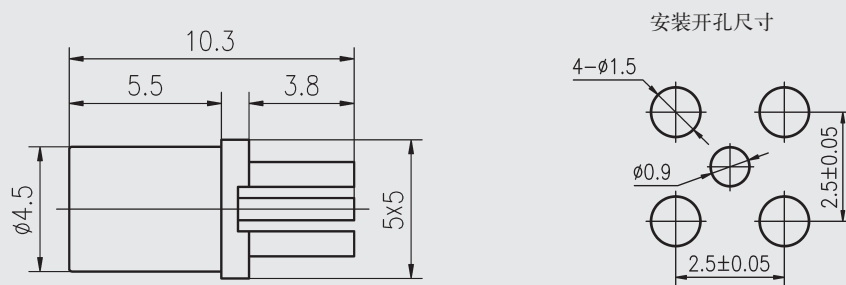
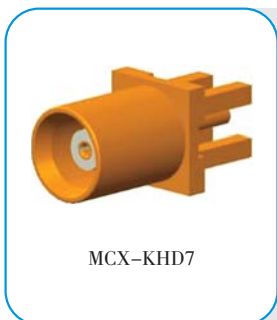
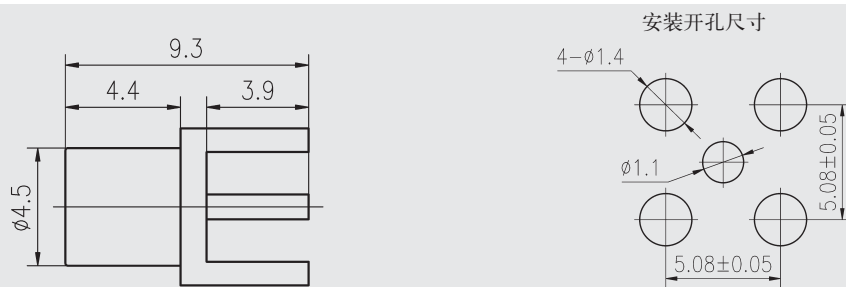
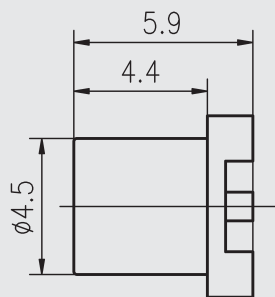
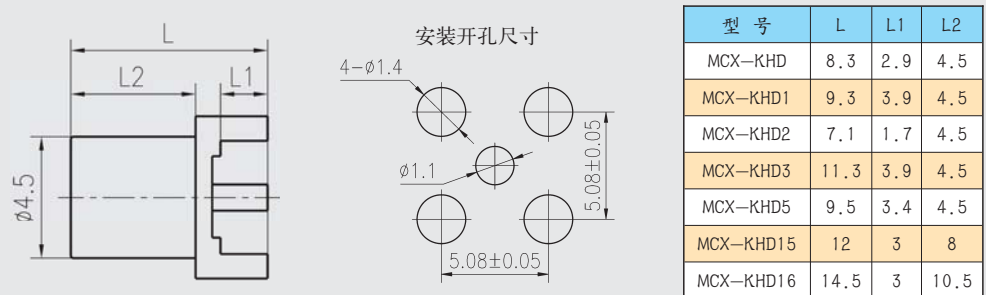
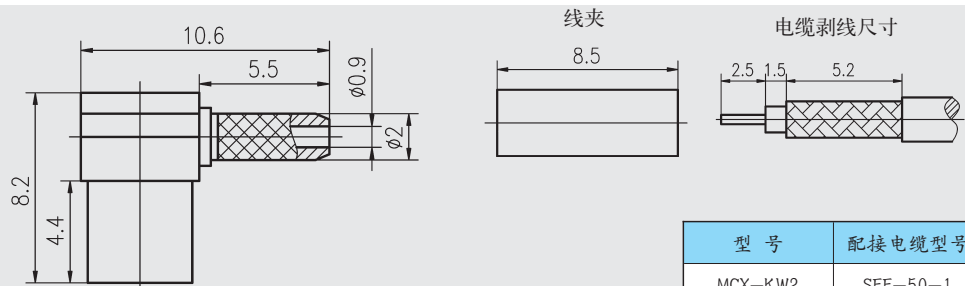


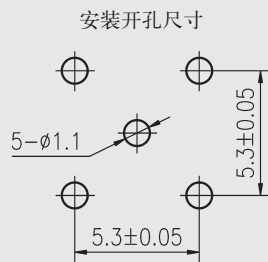
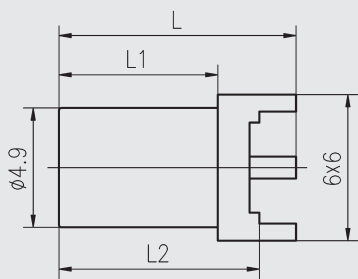
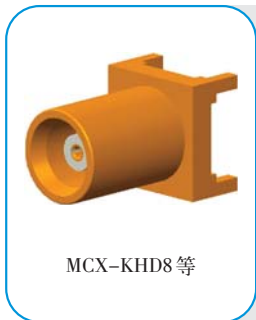
线夹

电缆剥线尺寸



型号	配接电缆型号
MCX-JW316	RG316DT





型号	L	L1	L2
MCX-KHD8	9.7	6.5	8.2
MCX-KHD9	7.0	3.8	5.5
MCX-KHD10	8.2	5.0	6.7

