

# SSMA 系列射频同轴连接器

## 概述

SSMA 系列射频同轴连接器具有体积小、机械和电气性能优越、可靠性高等优点，是近年来通讯行业选用较多的射频同轴连接器。

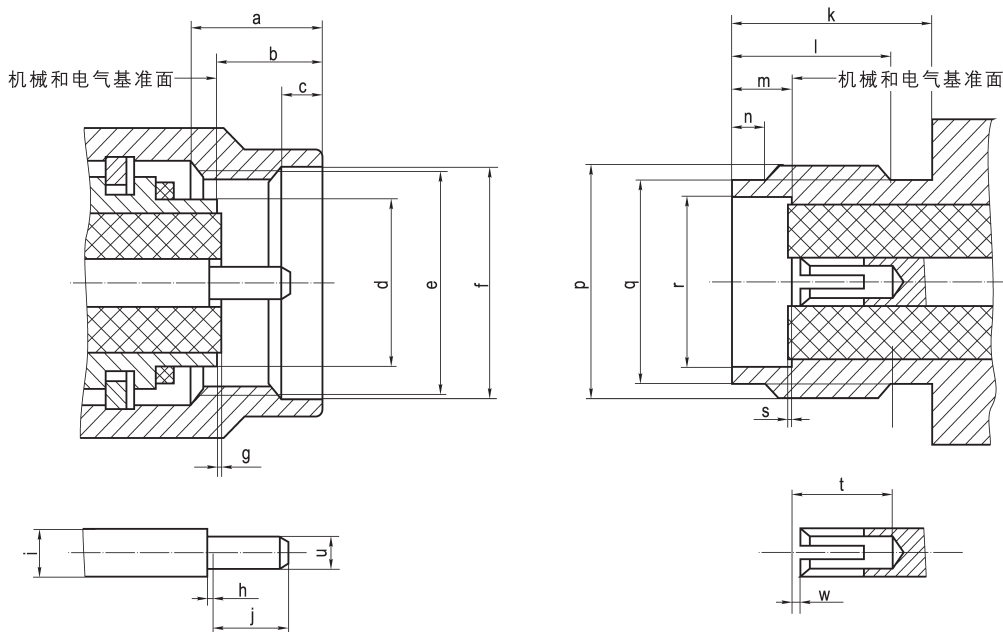
## 主要技术特性

温度范围	-55~+155℃	接触电阻	内导体 $\leq 6.0\text{m}\Omega$
特性阻抗	50 $\Omega$		外导体 $\leq 2.5\text{m}\Omega$
频率范围	0~30GHz	介质耐电压	750V (海平面)
电压驻波比	$\leq 1.07+0.01f$	寿命	500次插拔
绝缘电阻	$\geq 5000\text{M}\Omega$		

## 执行标准

质量等级	规范代号	适用产品类型
企军标	Q/Jc20153-2008	SSMA 接电缆及接微带连接器
企军标	Q/Jc20154-2008	SSMA 系列内转接器
七专	Q/Jc20454-2014	接电缆连接器
七专	Q/Jc20455-2014	接微带连接器
七专	Q/Jc20456-2014	转接器
可靠性	LMS070400009-2013	SSMA 接微带连接器
可靠性	LMS070400010-2013	SSMA 接电缆连接器
可靠性	LMS070400019-2013	转接器
字标	Q/QJA 20116/14-2018	SSMA 接微带连接器
字标	Q/QJA 20116/12-2018	SSMA 接电缆连接器
字标	Q/QJA 20116/13-2018	SSMA 转接器

## 接口配合尺寸

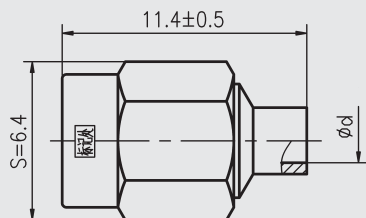


尺寸	最小值(mm)	最大值(mm)	尺寸	最小值(mm)	最大值(mm)	尺寸	最小值(mm)	最大值(mm)
a	2.54	3.43	h	0	0.25	p	0.19" -36UNS-2A	
b	2.54	3.38	i	$\phi 0.85$	$\phi 0.88$	q	$\phi 3.89$	$\phi 4.06$
c	0.38	1.14	j	1.27	1.65	r	$\phi 3.23$	$\phi 3.3$
d	$\phi 3.15$	$\phi 3.22$	k	5.84	-	s	-0.13	0
e	0.19" -36UNS-2B		l	4.83	5.33	t	2.92	-
f	$\phi 4.98$	$\phi 5.13$	m	1.91	1.96	u	$\phi 0.49$	$\phi 0.52$
g	-0.13	0	n	0.51	1.02	w	-	0.25

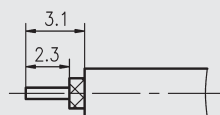
SSMA 系列——电缆插头插座：自由端



SSMA-JB2 等



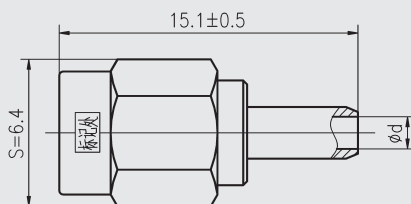
电缆剥线尺寸



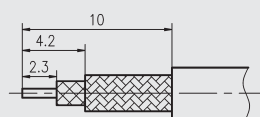
型号	d	配接电缆型号
SSMA-JB2	2.2	SFT-50-2-1
SSMA-JB3	3.6	SFT-50-3-1



SSMA-J2 等



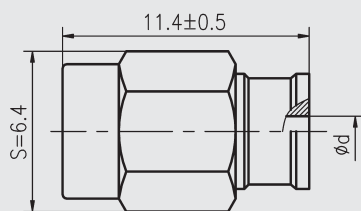
电缆剥线尺寸



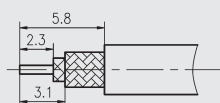
型号	d	L	配接电缆型号
SSMA-J2	0.9	6	SFF-50-1
SSMA-J3	1.6	6.5	SFF-50-1.5-1



SSMA-J2-H 等



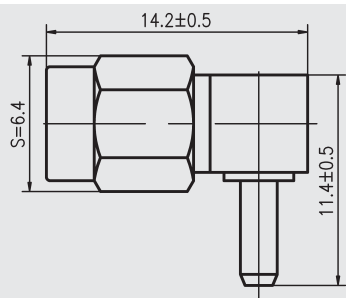
电缆剥线尺寸



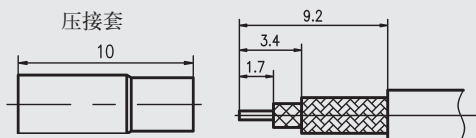
型号	d	配接电缆型号
SSMA-J2-H	1.6	SFF-50-1
SSMA-J3-H	2.4	SFF-50-1.5-1



SSMA-JW2



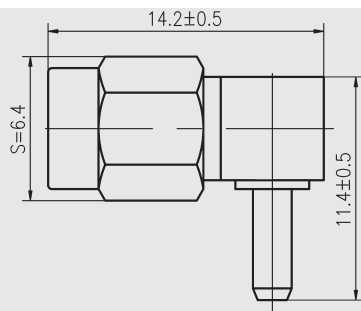
电缆剥线尺寸



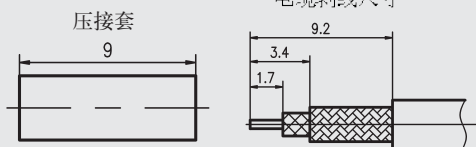
型号	配接电缆型号
SSMA-JW2	SFF-50-1



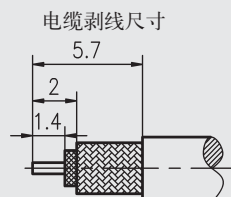
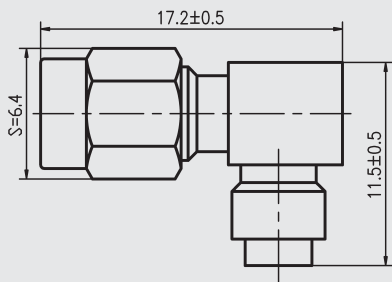
SSMA-JW3



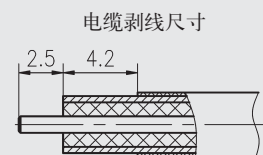
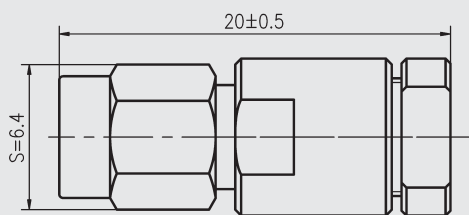
电缆剥线尺寸



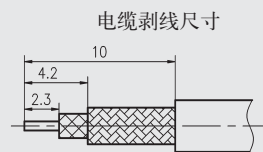
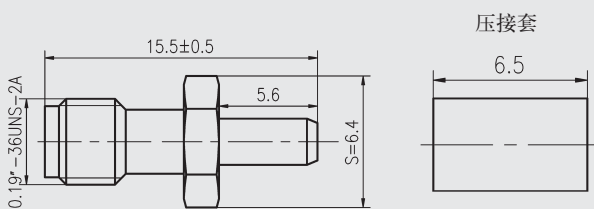
型号	配接电缆型号
SSMA-JW3	SFF-50-1.5-1



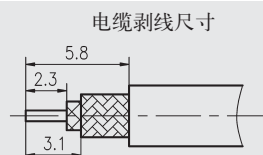
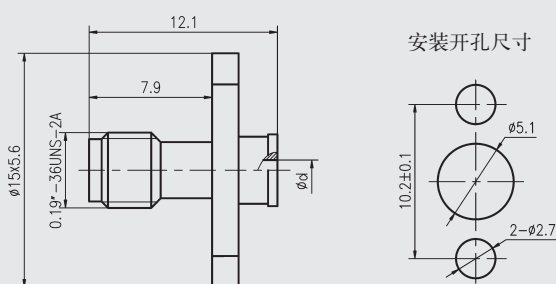
型号	配接电缆型号
SSMA-JW3-H	SFF-50-1.5-1



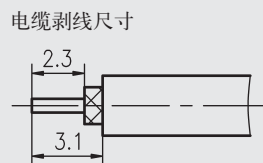
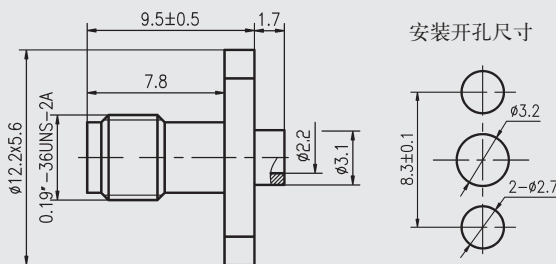
型号	配接电缆型号
SSMA-J360	UFB142A



型号	配接电缆型号
SSMA-K3	SFF-50-1.5-1



型号	d	配接电缆型号
SSMA-KF2-H	1.6	SFF-50-1
SSMA-KF3-H	2.4	SFF-50-1.5-1

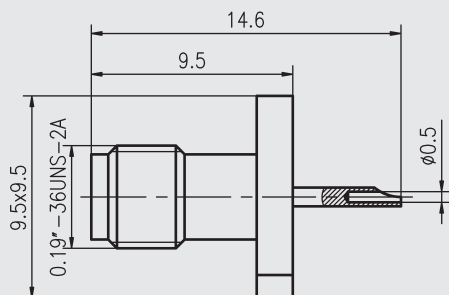


型号	配接电缆型号
SSMA-KFB2	SFT-50-2-1

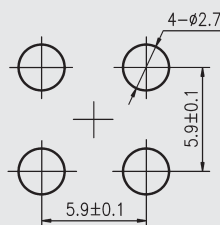
## SSMA 系列——微带插座



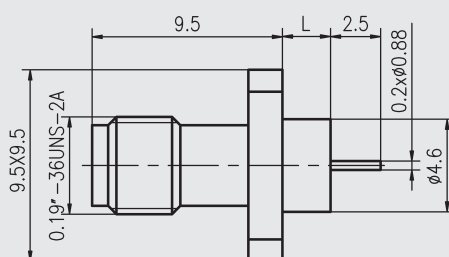
SSMA-KFD



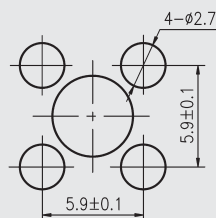
安装开孔尺寸



SSMA-KFD1 等



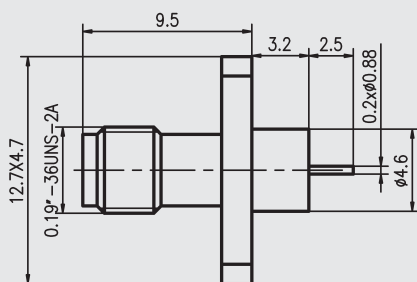
安装开孔尺寸



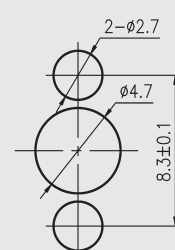
型号	L
SSMA-KFD1	2.4
SSMA-KFD2	3.2
SSMA-KFD3	4.8



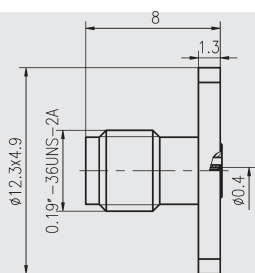
SSMA-KFD4



安装开孔尺寸



SSMA-KFD12G



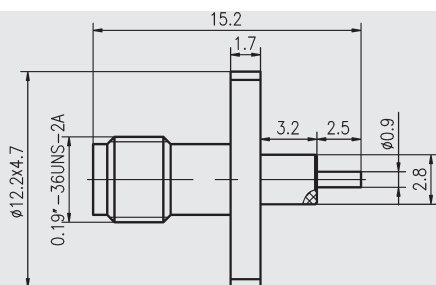
安装开孔尺寸



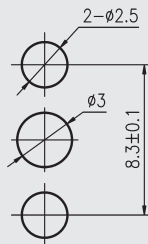
注：外壳材料为不锈钢。



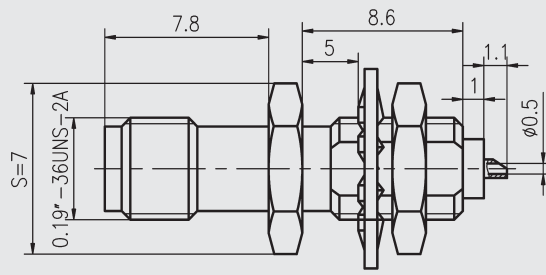
SSMA-KFD13G



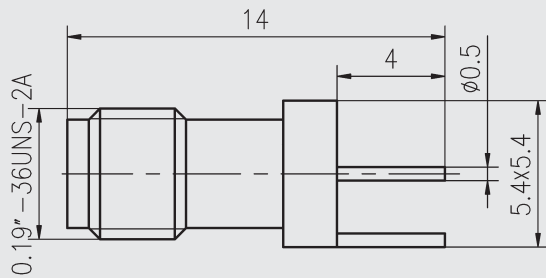
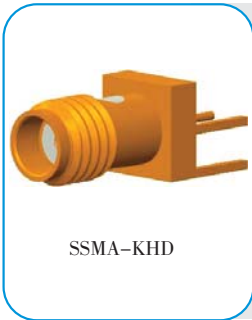
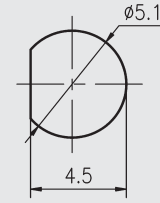
安装开孔尺寸



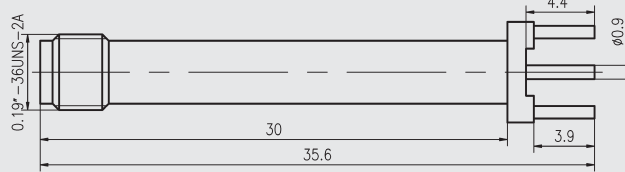
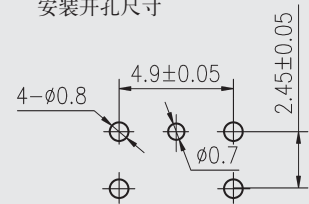
注：外壳材料为不锈钢。



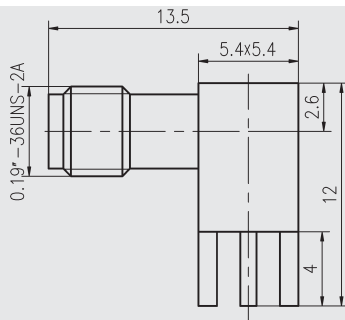
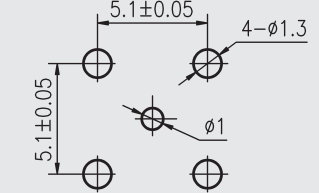
安装开孔尺寸



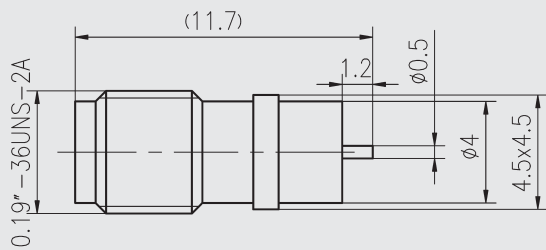
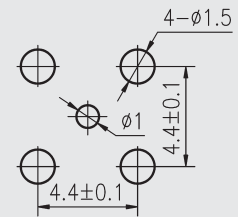
安装开孔尺寸



安装开孔尺寸



安装开孔尺寸



安装开孔尺寸

