

玻璃绝缘子

概述

射频玻璃绝缘子是雷达、电子对抗设备中传输微波信号的重要元件，广泛用于各类微波器件和组件上，如微波开关等。

直流馈电玻璃绝缘子可以广泛应用于仪器、仪表等微型设备中，具有密封功能，用于电信号的输入与输出。

产品可根据用户需求定制。

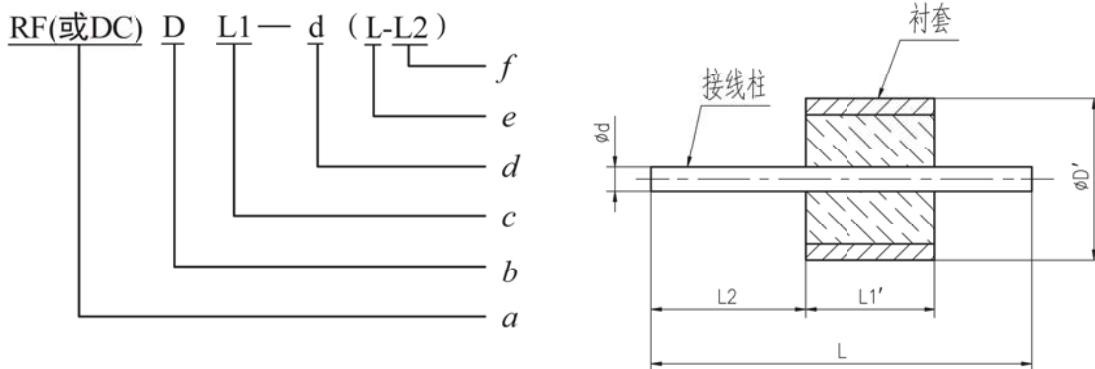
执行标准

质量等级	规范代号	适用产品类型
企军标	Q/Jc489-2018	玻璃绝缘子
七专	Q/Jc20639-2019	玻璃绝缘子
宇标	Q/QJA 20116/19-2018	玻璃绝缘子

主要技术特性

工作温度	-65℃ ~ +200℃	介质耐压(标准条件)	500Vmax
大气压力	101.3kPa ~ 4.4kPa	绝缘电阻(标准条件)	≥500MΩ
内导体涂覆	镀金	外导体涂覆	镀金
泄漏率	≤1 × 10 ⁻⁹ Pa·m ³ /s		

玻璃绝缘子的型号命名及外形尺寸

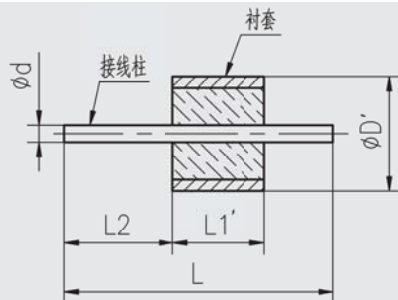
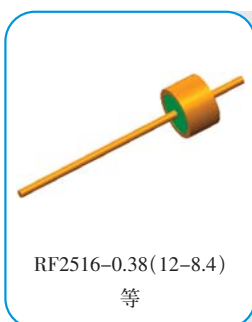
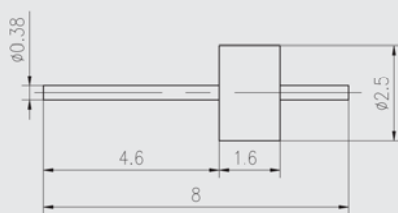
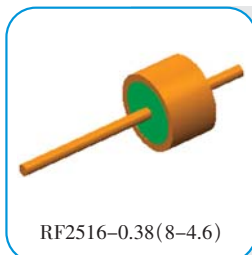
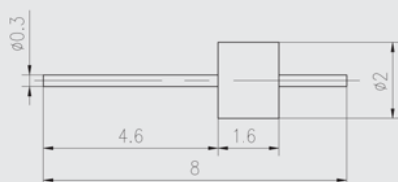
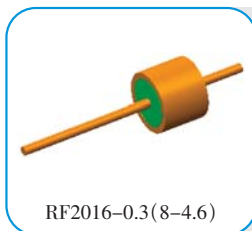
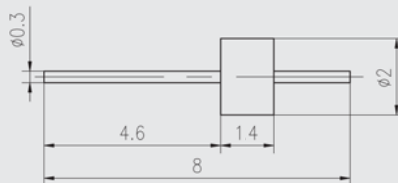
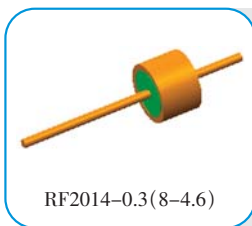
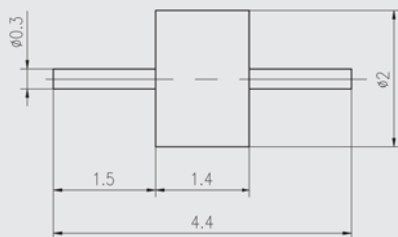
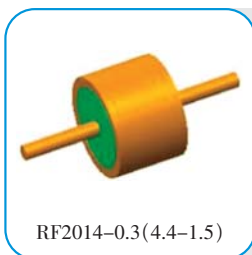
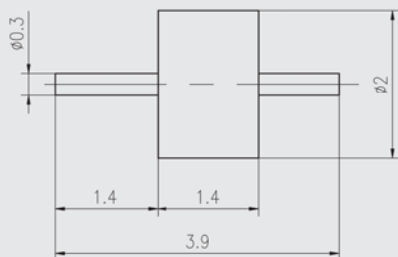
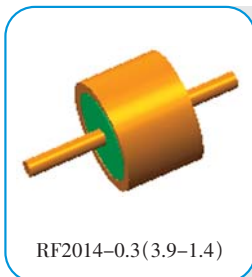


- 玻璃绝缘子型别，RF代表射频玻璃绝缘子，DC代表直流馈电玻璃绝缘子。
- 衬套外径，其数值是衬套实际外径尺寸的10倍，即 $D=10D'$ 。
- 衬套长度，其数值是衬套实际长度尺寸的10倍，即 $L1=10L1'$ 。
- 接线柱外径。
- 玻璃绝缘子总体长度。
- 接线柱露出最长端的长度。

例1：RF2516-0.38 (8-4.6) 表示射频玻璃绝缘子，衬套的外径为 $\phi 2.5\text{mm}$ ，长度为1.6mm，接线柱外径为 $\phi 0.38\text{mm}$ ，玻璃绝缘子总长为8mm，接线柱露出最长端长度为4.6mm。

例2：DC2016-0.7 (11-7.2) 表示直流馈电玻璃绝缘子，衬套的外径为 $\phi 2\text{mm}$ ，长度为1.6mm，接线柱外径为 $\phi 0.7\text{mm}$ ，玻璃绝缘子总长为11mm，接线柱露出最长端长度为7.2mm。

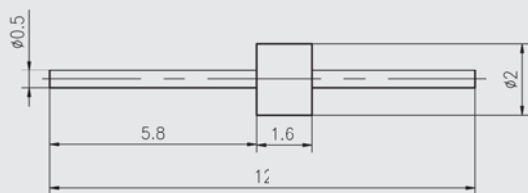
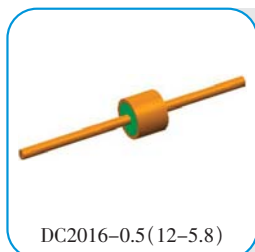
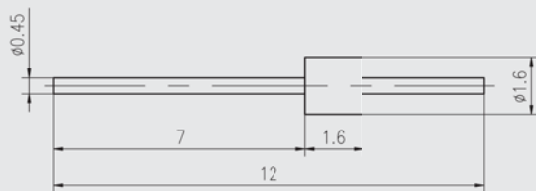
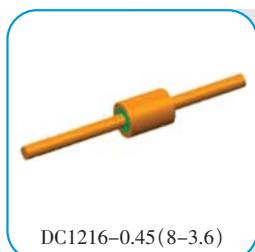
射频玻璃绝缘子（特性阻抗50Ω）

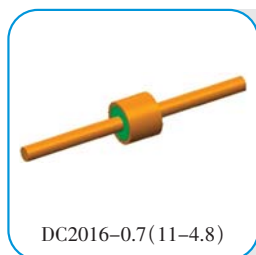




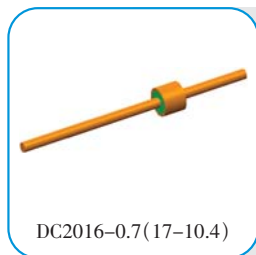
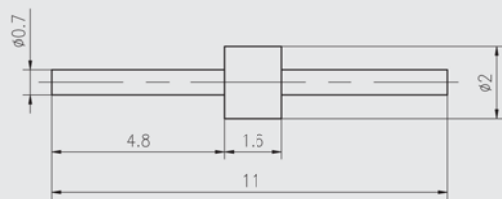
型号	D'	L1'	d	L	L2
RF2516-0.38(12-8.4)	2.5	1.6	0.38	12	8.4
RF2520-0.38(9-5)	2.5	2	0.38	9	5
RF2530-0.38(12-6.8)	2.5	3	0.38	12	6.8
RF2816-0.45(5.2-2.5)	2.8	1.6	0.45	5.2	2.5
RF2816-0.45(8-4.6)	2.8	1.6	0.45	8	4.6
RF2816-0.45(12-7.4)	2.8	1.6	0.45	12	7.4
RF3016-0.5(7.8-4.2)	3	1.6	0.5	7.8	4.2
RF3016-0.5(12-5.4)	3	1.6	0.5	12	5.4
RF3020-0.5(6-2.5)	3	2	0.5	6	2.5
RF3020-0.5(6.5-2.3)	3	2	0.5	6.5	2.3
RF3020-0.5(8.5-4.3)	3	2	0.5	8.5	4.3
RF3020-0.5(12-5)	3	2	0.5	12	5
RF3020-0.5(12-6)	3	2	0.5	12	6
RF3030-0.5(14-7)	3	3	0.5	14	7
RF3042-0.5(9-2.6)	3	4.2	0.5	9	2.6
RF3047-0.5(9.4-2.5)	3	4.7	0.5	9.4	2.5
RF3047-0.5(12-5.1)	3	4.7	0.5	12	5.1
RF4720-0.8(6.5-2.5)	4.7	2	0.8	6.5	2.5
RF5530-0.9(9-3)	5.5	3	0.9	9	3

直流馈电玻璃绝缘子

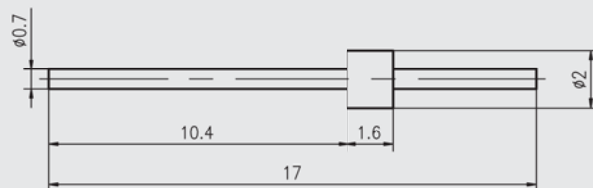
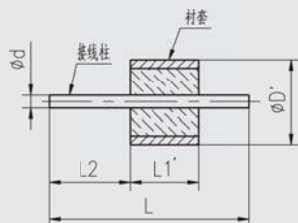




DC2016-0.7(11-4.8)



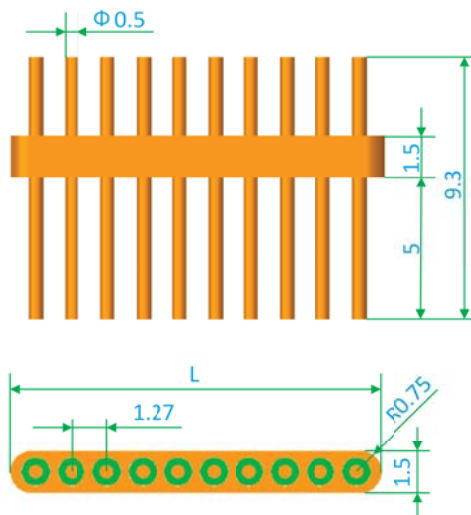
DC2016-0.7(17-10.4)


 RF2516-0.38(12-8.4)
等


型号	D'	L1'	d	L	L2
DC1216-0.45(8-3.6)	1.2	1.6	0.45	8	3.6
DC1616-0.45(12-7)	1.6	1.6	0.45	12	7
DC2016-0.5(12-5.8)	2	1.6	0.5	12	5.8
DC2016-0.7(11-4.8)	2	1.6	0.7	11	4.8
DC2016-0.7(17-10.4)	2	1.6	0.7	17	10.4
DC2018-0.5(14-6.1)	2	1.8	0.5	14	6.1
DC2020-0.6(9-4)	2	2	0.6	9	4
DC2030-0.7(11-4.6)	2	3	0.7	11	4.6
DC2516-0.7(11-4.8)	2.5	1.6	0.7	11	4.8
DC2518-0.8(12.8-6)	2.5	1.8	0.8	12.8	6
DC2518-0.8(27-15)	2.5	1.8	0.8	27	15
DC2520-0.8(25-13)	2.5	2	0.8	25	13
DC2530-0.7(11-4)	2.5	3	0.7	11	4
DC2816-1(11.5-5.8)	2.8	1.6	1	11.5	5.8
DC2816-1(16-9.9)	2.8	1.6	1	16	9.9
DC2830-1(16-6.5)	2.8	3	1	16	6.5
DC3030-0.8(25-19)	3	3	0.8	25	19

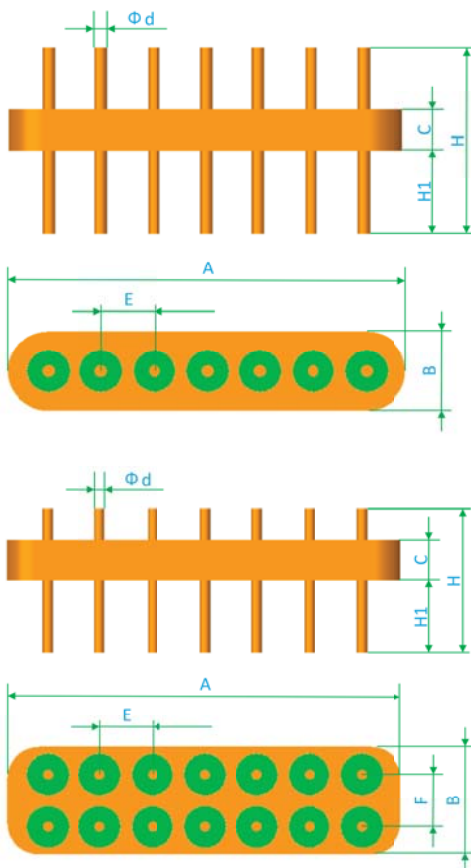
其它类玻璃绝缘子

1.27mm点距绝缘子



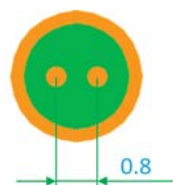
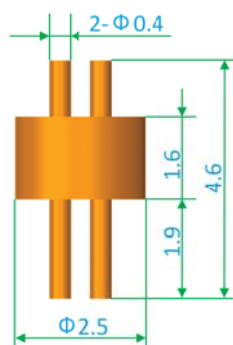
芯数	3	4	5	6	7	8	9	10	11
L	4.29	5.56	6.83	8.1	9.37	10.64	11.91	13.18	14.45

2.54mm点距绝缘子

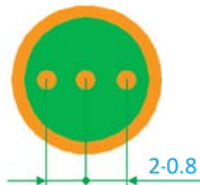
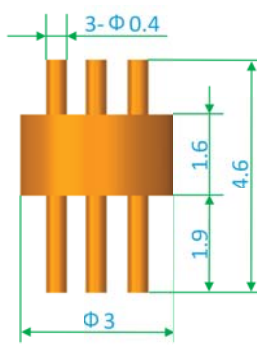


芯数	A	B	C	d	H	H1	E	F
3	8.88	3.8	2	0.6	9	4	2.54	
4	11.42	3.8	2	0.6	9	4	2.54	
5	13.96	3.8	2	0.6	9	4	2.54	
6	16.5	3.8	2	0.6	9	4	2.54	
7	19.04	3.8	2	0.6	9	4	2.54	
8	21.58	3.8	2	0.6	9	4	2.54	
9	24.12	3.8	2	0.6	9	4	2.54	
10	14	5.2	2	0.5	7	3.5	2.54	2.54
12	16.54	5.2	2	0.5	7	3.5	2.54	2.54
14	19.08	5.2	2	0.5	7	3.5	2.54	2.54
16	21.62	5.2	2	0.5	7	3.5	2.54	2.54

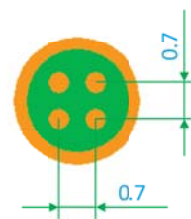
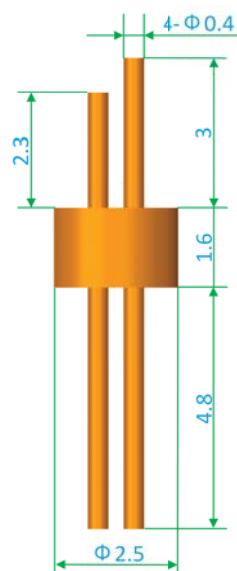
圆形多芯绝缘子



Y2 2516-0.4(4.6-1.9)

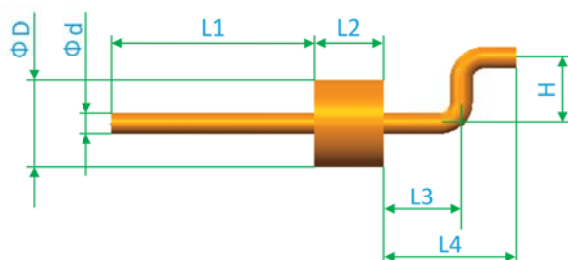


Y3 3016-0.4(4.6-1.9)



Y4 2516-0.4(9.4-4.8)

弯针直流馈电绝缘子



型号	D	d	L1	L2	L3	L4	H
DCW2016-0.5-1.5	2	0.5	4.6	1.6	1.78	3.05	1.5
DCW2016-0.5-2.5	2	0.5	5.4	1.6	1.78	3.05	2.5
DCW3020-0.5-2	3	0.5	5	2	1.75	4.5	2

平头绝缘子

